


STATE FAIR OF TEXAS.®

 2026 

 ARTS 

 *& Crafts* 
GUIDE

[BIGTEX.COM/CREATIVE](https://bigtex.com/creative)

BEGIN HERE

ENTERING OUR CONTESTS IS EASY



JUST FOLLOW THESE STEPS



1

CREATE AN ACCOUNT AT [BIGTEX.COM/GETCREATIVE](https://www.bigtex.com/getcreative).

2

ADD YOURSELF (OR ANYONE ELSE) AS A CONTESTANT.

3

SELECT YOURSELF AS A CONTESTANT AND PICK WHAT CONTEST(S) YOU'D LIKE TO ENTER. ADD CONTEST(S) TO YOUR SHOPPING CART, CHECK OUT & PAY ONCE YOU'RE DONE.

4

BRING YOUR ENTRIES TO THE FAIR. PLEASE SEE SPECIFIC DATES ON THE "THINGS TO KNOW" PAGE FOR EACH CONTEST. ALL ENTRIES WILL BE DROPPED OFF AT THE CREATIVE ARTS BUILDING AT FAIR PARK.

NEED HELP WITH YOUR REGISTRATION?

If you would like to register in person or over the phone with a Creative Arts team member, please call us at 214-421-8744, and we will be more than happy to help you get set up.



[WWW.BIGTEX.COM/CREATIVE](https://www.bigtex.com/creative)

EMAIL [CREATIVEARTS@BIGTEX.COM](mailto:creativearts@bigtex.com) WITH ANY QUESTIONS



THINGS TO KNOW

ARTS & CRAFTS CONTESTS

CANNING

CRAFT CREATIONS

DOLLS

FINE ART

GLUE-A-SHOE

HOBBY COLLECTIONS

HOLIDAY CORNER

NEEDLEWORK

PHOTOGRAPHY

SCALE MODELS

SCULPTURE

SEWING & QUILTING

YARN



REGISTRATION DEADLINE IS JULY 27

ENTRY DROP-OFF

CONTESTANTS MAY DROP OFF THEIR ENTRY AT THE CREATIVE ARTS BUILDING ON ONE OF THE FOLLOWING DAYS:

JULY 31 FROM 11 A.M. TO 7 P.M.

AUGUST 1 FROM 9 A.M. TO 5 P.M.

AUGUST 2 FROM 9 A.M. TO 5 P.M.

THINGS TO KNOW

ENTRY MAIL IN & MAIL BACK



- Contestants may also mail in their entries. All entries must arrive before the entry deadline of July 27th.
- When mailing:
 - › Ship through **USPS, FedEx, or UPS**.
 - » For **FedEx or UPS**:
State Fair of Texas
Attn: Creative Arts Dept.
1327 Admiral Nimitz Circle
Dallas, TX 75210
 - » For **USPS**:
State Fair of Texas
Attn: Creative Arts Dept.
P.O. Box 150009
Dallas, TX 75315
 - › Use a box we can reuse, or **include a new envelope** if mailing in an envelope.
 - › Include a **prepaid return label** (USPS, FedEx, or UPS).
 - › The return postage can be the **same amount you paid to send it**.
 - › Boxes are reused, so the **weight stays the same**.
- **After the Fair:** We repack your item, apply your prepaid label, and mail it back.
- If you pay by cash or check, we will ship via USPS, and tracking information will not be provided.

THINGS TO KNOW

PICK UP FOR NON-WINNING ENTRIES



Contestants may **pick up their non-winning entries** at the Creative Arts building on one of the following days:

- **August 28** from 11 a.m. to 7 p.m.
- **August 29** from 9 a.m. to 5 p.m.

WINNING ENTRIES



- Winning entries will be posted online at <https://creative.bigtex.com/sft-results/> the last week of August.
- All winning entries, including honorable mentions, will be displayed in cases at the Creative Arts building during the run of the Fair.
- Winning entries can be picked up at the Creative Arts building on one of the following days:
 - › **October 23** from 11 a.m. to 7 p.m.
 - › **October 24** from 9 a.m. to 5 p.m.

JUDGING



- Entries are judged against other entries within the same category based on individual merit. First, second, third, and honorable mention ribbons are awarded to the top entries in each category.
- **Best of Show** - The Best of Show award recognizes each category's highest-scoring entry out of all the first-place winners. Some contests, divisions, or categories may not be eligible for Best of Show and will be noted in the contest rules.
- **Director's Award** - The Director of the Creative Arts Department will select one entry representing the superior craftsmanship and creativity from all the Arts & Crafts entries. The Director's Award recipient will receive a \$750 award, and the entry will be prominently displayed during the Fair.

THINGS TO KNOW

GENERAL ENTRY RULES



- All entries are for amateurs only, except the “Teachers and Professionals” categories.
- Age Divisions:
 - › Adult Amateur: 18+ years of age.
 - › Juniors: 13-17 years of age.
 - › Child: 5-12 years of age.
- You cannot enter one piece in multiple categories. One item per category only.
- No edible items are allowed except for in the canning category.
- Any entry that previously won a ribbon in a State Fair of Texas contest may not be re-entered.
- No soiled, broken, or damaged items.
- Contestants must enter the age and skill division that applies to them.
- Entries must be handmade by the participants in applicable categories.
- All entries must be appropriate for family viewing.

SECURITY



For entries waiting to be judged, and those on display during the run of the Fair, the State Fair of Texas provides building security and surveillance around the clock, and every precaution is taken to protect all entered items. Any additional insurance or security deemed necessary by the contestant must be provided by that individual. The State Fair of Texas cannot be held liable for any damage or loss that happens to entries while on the property.

THINGS TO KNOW

KEY DATES

MARK YOUR CALENDARS!

MARCH 25	ARTS & CRAFTS CONTEST GUIDE AVAILABLE FOR DOWNLOAD
MAY 6	ONLINE REGISTRATION OPENS FOR ALL CONTESTS
JULY 27	REGISTRATION DEADLINE FOR ARTS & CRAFTS CONTESTS
JULY 31 - AUG. 2	ARTS & CRAFTS ENTRY DROP OFF
AUGUST 27	ARTS & CRAFTS WINNERS ANNOUNCED
AUGUST 28 - 29	PICK UP OF <u>NON-WINNING</u> ARTS & CRAFTS ENTRIES
OCTOBER 23 - 24 (POST-FAIR)	PICK UP OF WINNING ARTS & CRAFTS ENTRIES

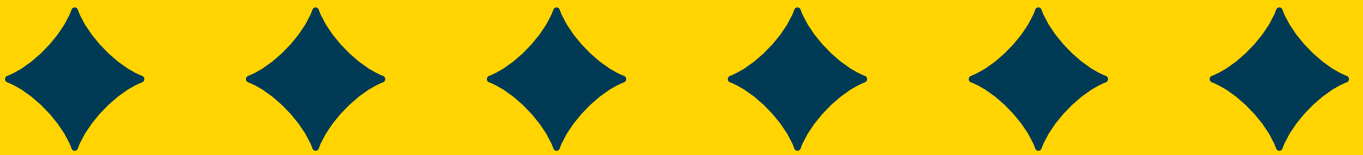


DID YOU KNOW?

CREATIVE ARTS
RIBBONS ARE
MADE BY HAND
HERE IN THE
LONE STAR STATE.



CANNING



CONTEST





CANNING

CONTEST DESCRIPTION



Preserve the harvest and showcase your home canning skills in this flavorful competition! Entries may include fruits, vegetables, jams, jellies, pickles, sauces, or other preserved foods prepared using safe canning methods. Each jar should be attractively presented and properly sealed.

JUDGING

Entries will be judged on taste, appearance, consistency, color, pack, and overall presentation, as well as evidence of proper canning technique and seal of quality.

ENTRY FEES (PER ITEM)

Adult Amateur (18+ yrs. of age) \$6

Juniors & Child (5-17 yrs. of age) \$4

MAXIMUM ENTRIES

Contestants may submit a maximum of twelve (12) entries, with only one (1) entry per category.

RIBBONS AND PRIZES

First, second, third, and honorable mention will be awarded in each category. All age divisions (Adult, Junior, and Child) compete in the same categories. **Best of Show is not awarded in this contest.**

SPECIALTY AWARD

**E196 MAYHAW JELLY

PRESENTED BY JOHN VESTAL**

<i>1st Place</i>	\$25
<i>2nd Place</i>	\$15
<i>3rd Place</i>	\$10

IN MEMORY OF JOY WYSE

***E202 POMEGRANITE JELLY

PRESENTED BY ROB CROOK ***

<i>1st Place</i>	\$50
<i>2nd Place</i>	\$25
<i>3rd Place</i>	\$10



CANNING

CONTEST RULES



- Must use colorless jars specially made for canning with two-piece, non-decorative lids (ring and lid cover) in the standard unit size designated in each category.
- No squat or decorative shaped jar. Should be clear with straight, regular sides.
Examples:



8 oz.



8 oz.



16 oz.

- Fruit and vegetable entries must be presented in **one (1)** 16oz. jar with **½" head space**. All others require **two (2)** identical 8oz. jars with **¼" head space**.
- Jars must be **sterilized**, with no permanent labeling.
- Jars must be properly filled and sealed by a pressure cooker or hot water bath.
- Amateurs only. No professionals or culinary teachers.
- No broken or damaged items.
- A **typed recipe** for the entry item must be included on a separate sheet of paper with the contestant's name, address, and phone number **on the back**.



CANNING

CATEGORIES



VEGETABLES:

- Judged on **aesthetics only**, not opened or tasted
- No pickled items
- For these categories, use pint (16 oz.) standard jars with 1/2" head space
- Each entry requires one (1) jar of each variety
- Entries are judged on appearance, color, pack, and liquid

- **E150.** Beets
- **E151.** Carrots
- **E152.** Corn
- **E153.** Green Beans
- **E154.** Mixed Vegetables
- **E155.** Stewed Tomatoes
- **E156.** Fancy Cut Vegetables (i.e., Flowers, Hearts, Stars, etc.)

FRUIT:

- Judged on **aesthetics only**, not opened or tasted
- No pickled items
- For these categories, use pint (16 oz.) standard jars with 1/2" head space
- Each entry requires one (1) jar of each variety
- Entries are judged on appearance, color, pack, and liquid

- **E157.** Berry (Any)
- **E158.** Fig
- **E159.** Peach (Sliced / Halved)
- **E160.** Pear

JELLY:

- Use 8 oz. standard jars with 1/4" head space
- Each entry requires two (2) identical jars of each variety: one is emptied for judging, and one remains sealed
- Entries are judged on color, consistency, flavor, and taste
- No more than two decorative fruits of the same variety may be used for an accent

- **E180.** Apple
- **E181.** Apricot
- **E182.** Basil
- **E183.** Beer
- **E184.** Blackberry
- **E185.** Blueberry
- **E186.** Cactus
- **E187.** Carbonated Soda
- **E188.** Cherry
- **E189.** Corn
- **E190.** Cranberry
- **E191.** Grape (Concord)
- **E192.** Grape (Domestic)
- **E193.** Grape (Wild)
- **E194.** Hot
- **E195.** **Mayhaw****
- **E196.** Mint
- **E197.** Peach
- **E198.** Pear
- **E199.** Pineapple
- **E200.** Plum (Red)
- **E201.** Plum (Wild)
- **E202.** **Pomegranate*****
- **E203.** Raspberry
- **E204.** Strawberry
- **E205.** Wine
- **E206.** Tropical Fruit
- **E207.** Two Fruit
- **E208.** Any Other



CANNING

CATEGORIES



SUGAR FREE JELLY:

- Use 8 oz. standard jars with 1/4" head space
- Each entry requires two (2) identical jars of each variety: one is emptied for judging, and one remains sealed
- No honey allowed
- Entries are judged on color, consistency, flavor, and taste

- **E234.** Berry (Any)
- **E235.** Fruit (Any)
- **E236.** Any Other

JAM:

- Use 8 oz. standard jars with 1/4" head space
- Each entry requires two (2) identical jars of each variety: one is emptied for judging, and one remains sealed
- Entries are judged on color, consistency, flavor, and taste
- The color of the jam must be consistent with the natural color of the fruit

- **E209.** Apricot
- **E210.** Banana
- **E211.** Berry & Fruit
- **E212.** Blackberry
- **E213.** Blueberry
- **E214.** Cherry
- **E215.** Grape
- **E216.** Hot Fruit
- **E217.** Hot Vegetable
- **E218.** Fig
- **E219.** Mango
- **E220.** Mixed Berry
- **E221.** Peach
- **E222.** Pear
- **E223.** Plum
- **E224.** Raspberry
- **E225.** Strawberry
- **E226.** Tropical Fruit
- **E227.** Two or More Fruit Combination
- **E228.** Vegetable
- **E229.** Vegetable & Fruit Combination
- **E230.** Any Other Fruit

SUGAR FREE JAM:

- Judged on aesthetics only, not opened or tasted
- Each entry requires two (2) identical jars of each variety: one is emptied for judging, and one remains sealed
- Entries are judged on color, consistency, flavor, and taste
- The color of the jam must be consistent with the natural color of the fruit.

- **E231.** Berry
- **E232.** Peach
- **E233.** Any Other



CANNING

CATEGORIES



PRESERVES:

- Use 8 oz. standard jars with 1/4" head space
- Each entry requires two (2) identical jars of each variety: one is emptied for judging, and one remains sealed
- Entries are judged on color, consistency, flavor, and taste

- E161. Apple
- E162. Apricot
- E163. Blackberry
- E164. Blueberry
- E165. Cherry
- E166. Fig
- E167. Fruit & Berry
- E168. Peach
- E169. Pear
- E170. Plum
- E171. Strawberry
- E173. Tropical Fruit (Any Kind)
- E174. Two or More Fruits

MARMALADE:

- Use 8 oz. standard jars with 1/4" head space
- Each entry requires two (2) identical jars of each variety: one is emptied for judging, and one remains sealed
- Entries are judged on color, consistency, flavor, and taste

- E175. Grapefruit
- E176. Orange
- E177. Lemon
- E178. Two or More Fruits
- E179. Vegetable

BUTTERS:

- Use 8 oz. standard jars with 1/4" head space
- Each entry requires two (2) identical jars of each variety: one is emptied for judging, and one remains sealed
- Entries are judged on appearance, color, consistency, flavor, and taste
- No paraffin can be used
- Cook fruit pulp and sugar to a thick consistency
- Less sugar is used than in jam

- E100. Apple
- E101. Apricot
- E102. Cherry
- E103. Peach
- E104. Plum
- E105. Tropical Fruit
- E106. Any Other



CANNING

CATEGORIES



RELISH/SAUCE:

- Use 8 oz. standard jars with 1/4" head space
- Each entry requires two (2) identical jars of each variety: one is emptied for judging, and one remains sealed
- Entries are judged on color, texture, flavor, pack, and taste

- **E107.** Barbecue Sauce
- **E108.** Chili Sauce
- **E109.** Chow–Chow
- **E110.** Chutney
- **E111.** Corn Relish
- **E112.** Cranberry Relish
- **E113.** Cucumber Relish
- **E114.** Fruit Salsa
- **E115.** Green Tomato Relish
- **E116.** Mustard
- **E117.** Pasta Sauce
- **E118.** Pepper Relish
- **E119.** Red Tomato Relish
- **E120.** Salsa (Hot)
- **E121.** Salsa (Mild)
- **E122.** Squash Relish
- **E123.** Zucchini relish

PICKLES:

- For these categories, use pint (16 oz.) standard jars
- Each entry requires two (2) identical jars of each variety: one is emptied for judging, and one remains sealed
- Entries are judged on color, flavor, texture, pack, and taste

- **E124.** Beets
- **E125.** Bread & Butter Pickles
- **E126.** Carrots
- **E127.** Cauliflower
- **E128.** Cucumber (Sour Brined)
- **E129.** Cucumber (Sour Quick)
- **E130.** Cucumber (Sweet)
- **E131.** Dill Cucumbers (Whole / Sticks)
- **E132.** Dill (Hot)
- **E133.** Dill (Sweet)
- **E134.** Dill (Vegetable, Any Kind)
- **E135.** Eggs (Pickled)
- **E136.** Figs (Sweet)
- **E137.** Green Beans
- **E138.** Hamburger Pickles
- **E139.** Mustard Pickles
- **E140.** Okra
- **E141.** Onions (Tiny / Whole)
- **E142.** Peach
- **E143.** Peppers (Candied Jalapeño)
- **E144.** Peppers (Jalapeño)
- **E145.** Peppers (Other Hot Varieties)
- **E146.** Squash/Zucchini
- **E147.** Tomato (Chunky)
- **E148.** Watermelon
- **E149.** Any Other

Contestants who enter the canning contest and win first place through honorable mention grant the State Fair of Texas the right and license to the entry (recipe and/or image) in perpetuity. Allowing the State Fair of Texas the right to edit, adapt, and publish the recipe and/or image in the State Fair of Texas annual cookbook or any special edition cookbooks, recipe blogs on Fair or sponsor websites, and in third-party media placement. The contestant will receive credit for the recipe in all published forms.

Due to space constraints, all items will be displayed according to our designers' prerogative.

It must be distinctly understood that in no case shall the State Fair of Texas, its directors, officers, or employees be held responsible for any loss, damage, or injury of any character to any person, animal, vehicle, artwork, exhibit, or article while participating in the Creative Arts building at the State Fair of Texas.

All entries in this contest MUST adhere to the rules stipulated for the contest.



**CRAFT
CREATIONS
CONTEST**





CRAFT CREATIONS

CONTEST DESCRIPTION



Craft Creations is a contest featuring works in a wide variety of handcrafted arts. Entries may include projects made from leather, mosaic tiles, woodburning, handcrafted toys & folk art, and many other unique craft forms. All entries must be appropriate for family viewing.

Encaustic Painting: painting using hot wax (in layers) mixed with pigments.

Folk Art: often self-taught style of art that expresses the cultural identity, heritage, and community values of a specific group of people.

JUDGING

Entries will be judged on craftsmanship and skill, creativity, design, and overall presentation.

ENTRY FEES (PER ITEM)

Adult Amateur (18+ yrs. of age) \$6

Teachers & Professionals (18+ yrs. of age) \$6

Juniors (13-17 yrs. of age) \$4

Child (5-12 yrs. of age) \$4

MAXIMUM ENTRIES

Contestants may submit a maximum of six (6) entries, with only one (1) entry per category.

RIBBONS AND PRIZES

Each category will be awarded a first, second, and third place ribbon and may also include honorable mention. Best of Show will be awarded to each division.



CRAFT CREATIONS

CONTEST RULES



- No edible items.
- Size limit: 30" x 30" x 30".
 - › Mobiles longer than 20" may be partially laid on shelf.
- Weight limit: 15lbs.
- No broken entries.
- No mannequins or body forms.

CATEGORIES



ADULT AMATEUR

- **C101.** Altered Clothing (Premade Clothing That Has Been Altered, Such as a Painted Jacket or Replaced Sleeves)
- **C107.** Any Craft Using State Fair Theme
- **C108.** Any Craft Using Recycle or Found Items
- **C100.** Egg Art
- **C157.** Folk Art
- **C152.** Handcrafted Childrens' Toys and Games (Any Medium)
- **C110.** Handmade Baskets of Any Material (Not Ceramic)
- **C103.** Leather: Any Article Hand Sewn
- **C102.** Leather: Any Tooled Article (Carved Stamped Embossed)
- **C124.** Mosaic Tile Non-Wall Hangings (Glass, Stone, and Ceramic)
- **C123.** Mosaic Tile Wall Hanging (Glass, Stone, and Ceramic)
- **C153.** Wood Burning Designs
- **C156.** Miscellaneous

PAINTING

- **C115.** Altered Thrift Store Painting
- **C160.** Diamond Paintings
- **C114.** Encaustic Painting
- **C161.** Paint by Number
- **C116.** Painted/Embellished Objects (Rocks, Gourds, Boxes, Misc.)
- **C117.** String Art
- **C162.** Yarn Painting

PAPER

- **C111.** Greeting Cards (Group of Three (3) Max)
- **C129.** Scrapbook/Junk Journal Pages (Any Size, Two-Page Scrapbook Layout in Sleeves)
- **C128.** Quilling



CRAFT CREATIONS

CATEGORIES



JEWELRY

- **C112.** Beadwork Jewelry
- **C122.** Beadwork (Any Other Article)
- **C121.** Jewelry Art Collage (Framed/Unframed)
- **C119.** Single Item or Matching Pieces (No Stone)
- **C120.** Single Item or Matching Pieces (with Stones)
- **C109.** Miscellaneous (Jewelry or Beadwork not Specified Above)

STAINED GLASS

- **C131.** Stained Glass 2D Copper Foil
- **C132.** Stained Glass 2D Leaded
- **C133.** Stained Glass 3D (Any)
- **C134.** Stained Glass Suncatchers (Any)

TEACHERS & PROFESSIONALS

- **C166.** Jewelry (Any)
- **C171.** Mosaic (Any Subject)
- **C168.** Stained Glass (Any)
- **C172.** State Fair Theme
- **C174.** Miscellaneous

JUNIORS

- **C181.** Jewelry
- **C182.** Leather Craft
- **C184.** Painted Object (Rocks, Gourds, etc.)
- **C187.** Recycled Items
- **C180.** State Fair Theme
- **C185.** String Art
- **C183.** Woodcraft (Woodburning Included)
- **C188.** Miscellaneous

CHILD

- **C204.** Glass (Any)
- **C202.** Masks
- **C203.** Mosaic (Any Material)
- **C195.** Painted Objects (Rocks, Gourds, etc.)
- **C192.** State Fair Theme
- **C197.** String Art
- **205.** Miscellaneous

Due to space constraints, all items will be displayed according to our designers' prerogative.

It must be distinctly understood that in no case shall the State Fair of Texas, its directors, officers, or employees be held responsible for any loss, damage, or injury of any character to any person, animal, vehicle, artwork, exhibit, or article while participating in the Creative Arts building at the State Fair of Texas.

All entries in this contest MUST adhere to the rules stipulated for the contest.



DOLLS



CONTEST





DOLLS

CONTEST DESCRIPTION



This contest features entries of collected dolls across a variety of categories, including purchased dolls, handmade dolls created by contestants, and handmade dolls crafted by others. Additional categories include handmade bears, other animal figures, and a variety of characters and themed dolls. An antique division is also available for dolls made before 1930. Participants are encouraged to showcase the range and character of their collections through thoughtful presentation and attention to detail. All must be appropriate for family viewing.

JUDGING

Entries will be judged on craftsmanship, presentation, condition, accuracy of details, and authenticity.

ENTRY FEES (PER ITEM)

Adult Amateur (18+ yrs. of age) \$6

Juniors (13-17 yrs. of age) \$4

Child (5-12 yrs. of age) \$4

MAXIMUM ENTRIES

Contestants may submit a maximum of six (6) entries, with only one (1) entry per category.

RIBBONS AND PRIZES

Each category will be awarded a first, second, and third place ribbon and may also include honorable mention. Adult and Junior divisions compete in the same categories, including Best of Show. The Child division competes in their categories and for Best of Show.



DOLLS

CONTEST RULES



- The composition of the head determines the classification of some of the categories.
- Stand is required for proper display.
- No broken or damaged items.
- Entries may not exceed 24" in height unless noted in category details.
- No Crochet or Knit when handmade by contestant.

CATEGORIES



ADULTS & JUNIORS

ANTIQUE DOLL

Before 1930 (A&M, Kestner, Simon, Halbig, etc.)

- **D100.** Bisque / Porcelain
- **D101.** China Head
- **D102.** Other

MODERN OR CONTEMPORARY DOLLS

1930 to present-day (Alexander's, Effanbee, Horseman, Vogue, Ideal, and Mattel).

- **D108.** Barbies
- **D109.** Baby Dolls
- **D106.** Bisque / Porcelain
- **D103.** Composition
- **D105.** Hard Plastic
- **D104.** Vinyl
- **D107.** Other

INTERNATIONAL DOLLS

- **D110.** Any Country (must be manufactured and clothed in the country they represent)
- **D111.** Any Country (Not Made in the Country Represented)

HANDCRAFTED DOLLS

The contestant must make it; no knit or crochet.

- **D112.** Cloth (Sculpted)
- **D113.** Cloth (Flat Face)
- **D114.** Polymer Clay
- **D115.** Other



DOLLS

CATEGORIES



ADULTS & JUNIORS (CONT.)

HANDCRAFTED DOLLS

Must be purchased by the contestant.

- D116. Cloth
- D117. Other

CHARACTERS, CELEBRITIES, AND THEME DOLLS

- D125. Americana
- D127. Any Pair (Not Handcrafted)
- D129. Troll Dolls
- D123. Any Celebrity Doll
- D128. Clowns
- D121. Victorian Style
- D122. Any Character Doll
- D120. Country/Western
- D126. Any Pair (Handcrafted)
- D124. State Fair Theme

BEARS

Entries may not exceed 18" in height; no knit or crochet.

- D130. Bare Bears (Made by Contestant)
- D132. Dressed Bears (Made by Contestant)
- D131. Bare Bears (Not Made by Contestant)
- D133. Dressed Bears (Not Made by Contestant)

ANIMALS

Entries may not exceed 18" in height; no knit or crochet animals.

- D134. Any Animal (Made by Contestant)
- D135. Any Animal (Not Made by Contestant)
- D136. Other

MINIATURES

Entries may not exceed five (5) inches

- D139. Bears
- D137. Animal (Any Other)
- D138. Doll (Any)

OTHER

- D141. Dollhouse Dolls (Any)



DOLLS

CATEGORIES



CHILD

- D145. American Girl Type
- D143. Baby Dolls
- D144. Bears
- D142. Dolls 1930 to Present-Day
- D146. Handcrafted by Contestant (No Crochet or Knit)
- D147. Other Not Listed

Due to space constraints, all items will be displayed according to our designers' prerogative.

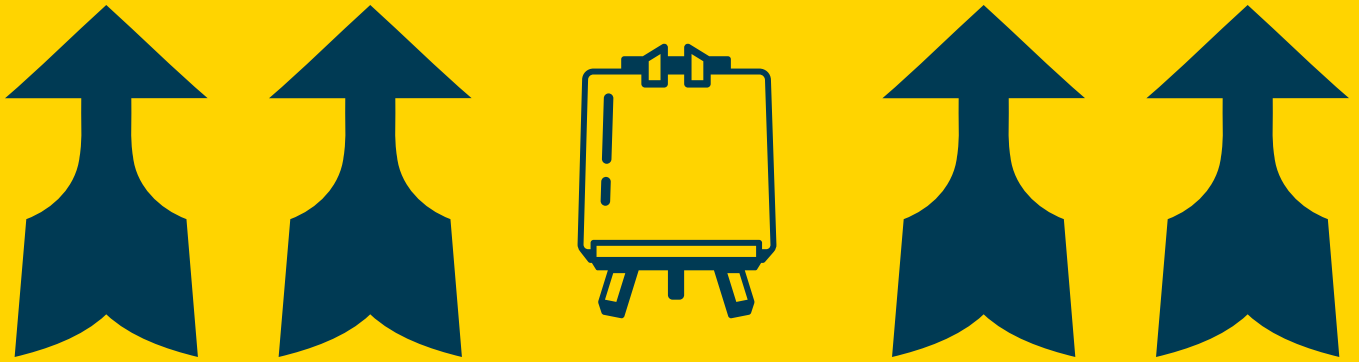
It must be distinctly understood that in no case shall the State Fair of Texas, its directors, officers, or employees be held responsible for any loss, damage, or injury of any character to any person, animal, vehicle, artwork, exhibit, or article while participating in the Creative Arts building at the State Fair of Texas.

All entries in this contest MUST adhere to the rules stipulated for the contest.



**FINE
ART**

CONTEST





FINE ART

CONTEST DESCRIPTION



This category celebrates creativity expressed through two-dimensional art forms. Entries may include drawings, paintings, mixed media, printmaking, or other flat-surface works that showcase artistic vision and technical skill. All works must be framed, ready to hang, and appropriate content for family viewing.

JUDGING

Entries will be judged on composition, originality, craftsmanship and technical skill, and overall visual impact.

ENTRY FEES (PER ITEM)

Adult Amateur (18+ yrs. of age) \$6

Teachers & Professionals (18+ yrs. of age) \$6

Juniors (13-17 yrs. of age) \$4

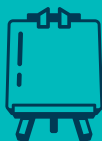
Child (5-12 yrs. of age) \$4

MAXIMUM ENTRIES

Contestants may submit a maximum of six (6) entries, with only one (1) entry per category.

RIBBONS AND PRIZES

Each category will be awarded a first, second, and third place ribbon and may also include honorable mention. Best of Show will be awarded per division.

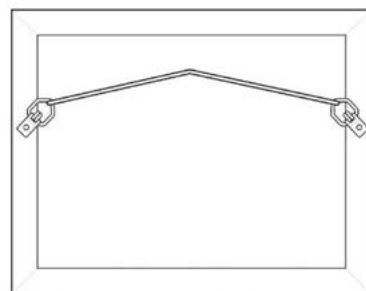
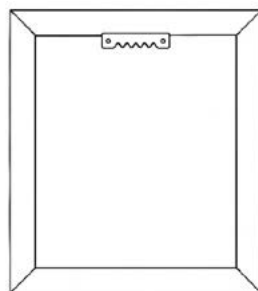


FINE ART

CONTEST RULES



- Size: **minimum 8"x10", maximum 36" x 36"**.
 - › Diptychs and triptychs accepted within size requirement.
- Completed within the last year
- Must be **framed** not hot glued to matboard alone. Canvas board must also be framed.
- **No glass.**
 - › Accepted: plexiglass, plastic, no covering.
- Back of frame or wrapped canvas must have **rings with wire** or **sawtooth hanger** so it's **ready to hang**.



- No wet artwork.
- On back, please include:
 - › First and last name
 - › Phone number
 - › Category entered



FINE ART

CATEGORIES



ADULT AMATEUR

OIL/ACRYLIC/GOUCHE

- A102. Animal
- A104. Fantasy/Abstract
- A101. Landscape (With or Without Figures)
- A107. Nostalgia
- A103. Portrait
- A105. Seascape
- A100. Still Life (i.e. Food, Fruit, Veggies, Flowers, Inanimate Objects)
- A106. Town/Cityscape/Architecture/Building
- A108. Any Subject

ANY MEDIUM

- A109. State Fair Themed

WATERCOLOR

- A111. Animal
- A110. Landscape/Seascape
- A112. Portrait
- A113. Still Life (i.e. Food, Fruit, Veggies, Flowers, Inanimate Objects)
- A114. Any Subject

PEN & INK DRAWING OR SCRATCH ART

- A125. Animal
- A126. Portrait
- A115. Any Subject

PRINTMAKING

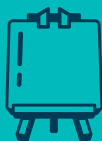
- A175. Any Subject

CHALK PASTEL/OIL PASTEL/COLORED PENCIL

- A127. Animal
- A130. Landscape/Cityscape
- A131. Portrait
- A132. Any Subject

CHARCOAL/GRAPHITE PENCIL

- A116. Animal
- A117. Portrait
- A118. Still Life (i.e. Food, Fruit, Veggies, Flowers, Inanimate Objects)
- A119. Any Subject



FINE ART

CATEGORIES



COLLAGE

- **A135.** Your Own Art (Painted, Drawn, etc. by Your Own Hand) That You Cut Up and Collaged
- **A136.** Not Your Own Art (Magazines, Photos, etc.) You Cut Up and Collaged

MIXED MEDIA

Any two mediums combined. Example: watercolor and ink, or marker and colored pencil.

- **A120.** Animal
- **A122.** Portrait
- **A121.** Any Subject
- **A145.** Any Subject WITH Embellishments (You must have painted or drawn the artwork, but you may glue smallish objects like dried flowers, beads, etc. Nothing that sticks out and is large)

MINIATURES

2"x 2" minimum to 5"x 5" maximum (not including frame)

- **A123.** Any Medium, Any Subject

DIGITAL ILLUSTRATION

Created with a graphic illustration program, printed and framed according to all rules.

- **A150.** Any Subject

TEACHERS & PROFESSIONALS

ANY MEDIUM

- **A140.** State Fair Themed

OIL/ACRYLIC/PASTELS

- **A124.** Animal/Portrait
- **A128.** Any Subject

WATERCOLOR/GOUACHE

- **A129.** Animal/Portrait
- **A133.** Any Subject



FINE ART

CATEGORIES



DRAWING MEDIUM (INK, CHARCOAL, GRAPHITE, COLORED PENCIL, ETC.)

- A134. Animal/Portrait
- A138. Any Subject

MIXED MEDIA

Any two mediums combined. Example: watercolor and ink, or marker and colored pencil.

- A137. Animal/Portrait
- A139. Any Subject

JUNIORS

ANY MEDIUM

- A159. State Fair Themed

OIL/ACRYLIC/PASTELS

- A141. Animal
- A144. Portrait
- A146. Any Subject
- A143. Landscape/Seascape
- A142. Still Life

WATERCOLOR

- A147. Animal
- A148. Portrait
- A149. Any Subject

INK/SCRATCH ART

- A152. Any Subject

CHARCOAL/GRAPHITE/COLORED PENCIL

- A153. Animal
- A155. Portrait
- A157. Any Subject
- A154. Landscape/Seascape
- A156. Still Life

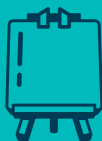
MIXED MEDIA

- A158. Any Subject

DIGITAL ILLUSTRATION

Created with a graphic illustration program, printed and framed according to all rules.

- A151. Any Subject



FINE ART

CATEGORIES



CHILD

Child contestants may only enter categories within their age group. One entry per category.

5 TO 7

- **A162.** Animal
- **A170.** Collage (Any Medium)
- **A159.** State Fair Themed
- **A161.** Any Subject

8 TO 9

- **A165.** Animal
- **A170.** Collage (Any Medium)
- **A172.** Landscape/Seascape
- **A166.** State Fair Themed
- **A164.** Any Subject

10 TO 12 YEARS

- **A168.** Animal
- **A173.** Collage (Any Medium)
- **A174.** Landscape/Seascape
- **A169.** State Fair Themed
- **A167.** Any Subject

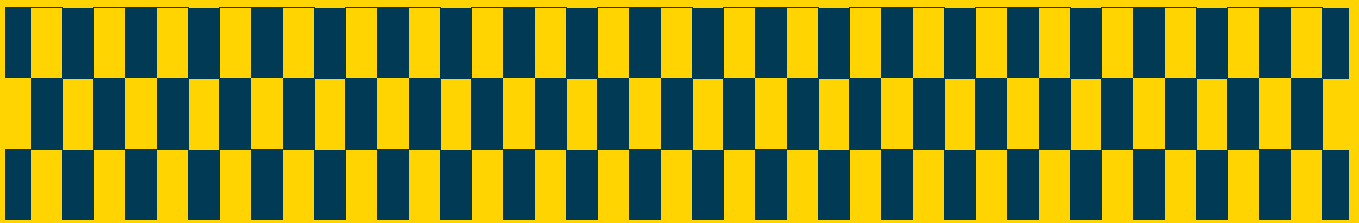
Due to space constraints, all items will be displayed according to our designers' prerogative.

It must be distinctly understood that in no case shall the State Fair of Texas, its directors, officers, or employees be held responsible for any loss, damage, or injury of any character to any person, animal, vehicle, artwork, exhibit, or article while participating in the Creative Arts building at the State Fair of Texas.

All entries in this contest MUST adhere to the rules stipulated for the contest.



GLUE-A-SHOE



CONTEST





GLUE-A-SHOE

CONTEST DESCRIPTION



Step into creativity—literally! The Glue-A-Shoe Contest invites crafty minds to transform a single shoe into a witty, laugh-worthy diorama where imagination runs wild and the shoe itself goes cleverly undercover. Contestants must design a miniature scene in which the shoe is disguised, hidden, or woven into the display in a pun-tastic and humorous way. Contestants will use **one shoe** (not a pair) to create their diorama that is appropriate for family viewing.

JUDGING

Entries will be judged on craftsmanship, creativity, design, and overall presentation. This includes how well the shoe is hidden in the sculpture, how witty, funny, or creative the idea is, and the quality of detail used to create it.

ENTRY FEES (PER ITEM)

Adult Amateur (18+ yrs. of age) \$6

Teachers & Professionals (18+ yrs. of age) \$6

Juniors (13-17 yrs. of age) \$4

Child (5-12 yrs. of age) \$4

MAXIMUM ENTRIES

Contestants may submit a maximum of six (6) entries, with only one (1) entry per category.

RIBBONS AND PRIZES

Each category will be awarded a first, second, and third place ribbon and may also include honorable mention. One Best of Show is awarded among all categories.



GLUE-A-SHOE

CONTEST RULES



- Maximum size - 24" L x 24" W x 24" H.
- No pairs of shoes; only one shoe allowed per entry.
- No broken or damaged items.
- No edible items are allowed.
- All entries must display their title on the item.

CATEGORIES



ADULT AMATEUR

- M100. Boot
- M102. Sandal or Flip-Flop
- M105. Any Other Shoe
- M108. Crock
- M104. Slip-On
- M101. High-Heeled Shoe
- M103. Tennis Shoe

JUNIOR

- M106. Any Shoe

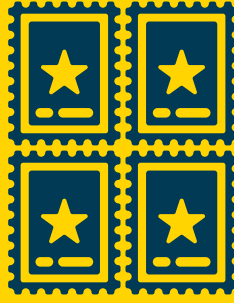
CHILD

- M107. Any Shoe

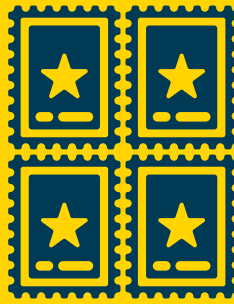
Due to space constraints, all items will be displayed according to our designers' prerogative.

It must be distinctly understood that in no case shall the State Fair of Texas, its directors, officers, or employees be held responsible for any loss, damage, or injury of any character to any person, animal, vehicle, artwork, exhibit, or article while participating in the Creative Arts building at the State Fair of Texas.

All entries in this contest MUST adhere to the rules stipulated for the contest.



HOBBY COLLECTIONS CONTEST





HOBBY COLLECTIONS

CONTEST DESCRIPTION



Do you have a special collection that tells a story? Enter our Hobby Collections Contest and share a piece of your passion with others! Whether it's toys, tools, trinkets, or totally random curiosities, we want to see what's been hiding in your attic or proudly displayed on your shelf. Participants are invited to submit two related items from their personal collections that are at least 30 years or older. These items do not need to be identical but must be part of the same collection. The only special categories are the antique and photograph categories, which require only a single item and have different age requirements. All entries must be appropriate for family viewing.

JUDGING

Entries will be judged on condition of item and its uniqueness.

ENTRY FEES (PER ITEM)

Adult Amateur (18+ yrs. of age) \$6

Juniors and Child (5-17 yrs. of age) \$4

MAXIMUM ENTRIES

Contestants may submit a maximum of six (6) entries, with only one (1) entry per category.

RIBBONS AND PRIZES

First, second, third, and honorable mention will be awarded in each category. **All age divisions (Adult, Junior, and Child) compete in the same categories.** Best of Show is not awarded in this contest.



HOBBY COLLECTIONS

CONTEST RULES



- Must be two (2) items to show collection; do not need to be identical.
- Antique Item category is one item that is 100 years or older.
- Photograph category is one item, framed, that is 50 years or older.
- 10 lbs. weight limit.
- Size limit: 20" H x 18" L x 12" wide or deep.
- No broken items.
- Winning items from previous years may not be re-entered.

CATEGORIES



- **F102.** American Pottery
- **F105.** Banks
- **F107.** Bells
- **F108.** Belt Buckles
- **F100.** Brand Name Advertising Items
- **F116.** Cameras
- **F109.** Children's Books
- **F122.** Clocks
- **F124.** Cookbooks
- **F125.** Cookie Jars
- **F128.** Costume Jewelry (with Display)
- **F129.** Cowboy Boots (One (1) Pair)
- **F132.** Cuff Links (Two (2) Pairs, Ready to Display)
- **F134.** Cups and Saucers (Demitasse)
- **F133.** Cups and Saucers
- **F139.** Dresser/Vanity Accessories
- **F140.** Entertainment Memorabilia
- **F142.** Figurines (China, Glass, Ceramic, Wooden)
- **F144.** Fishing Lures (Framed Only)
- **F145.** Handkerchiefs
- **F149.** Lunch Boxes
- **F180.** Miscellaneous Toys
- **F152.** Mugs
- **F155.** Native American Items
- **F153.** Oil Lamps
- **F154.** Ornamental Containers
- **F161.** Patriotic Items (No Guns)
- **F157.** Perfume Bottles
- **F159.** Pitchers
- **F160.** Plates
- **F162.** Postcards (Framed Only)
- **F165.** Salt and Pepper Shaker (Two (2) Pairs)
- **F166.** Sewing Tools and Notions
- **F169.** Sports Memorabilia
- **F170.** State Fair of Texas Memorabilia
- **F172.** Teapots
- **F173.** Texas Items
- **F179.** Toy Games
- **F178.** Toy Vehicles (Automobiles, Airplanes, Trains, Cars, Trucks, etc.)
- **F186.** Vases
- **F191.** Vintage Comic Books (in Clear Protective Sleeve)
- **F187.** Vintage Cross Stitch
- **F146.** Vintage Hats
- **F192.** Vintage Holiday Items
- **F138.** Vintage Office/Desk Accessories
- **F148.** Vintage Pins (on a Display)
- **F164.** Vintage Purses
- **F175.** Vintage Tins
- **F176.** Vintage Tools
- **F130.** Western/Cowboy Items
- **F189.** World's Fair Items
- **F190.** Youth Organization Items



HOBBY COLLECTIONS

CATEGORIES



GLASS

- **F101.** American Glass
- **F119.** Carnival Glass
- **F123.** Cobalt Glass
- **F131.** Cranberry Glass
- **F135.** Cut Glass
- **F137.** Depression Glass
- **F151.** Milk Glass
- **F163.** Pressed Glass

PHOTOGRAPHY

- **F199.** Vintage Photographs (50+ Years, Single Item, Framed)

ANTIQUUE

Entries must be a single item aged 100 years or older.

- **F194.** China
- **F195.** Glass
- **F193.** Jewelry
- **F198.** Printed Material
- **F196.** Utensils/Tools
- **F200.** Other

Due to space constraints, all items will be displayed according to our designers' prerogative.

It must be distinctly understood that in no case shall the State Fair of Texas, its directors, officers, or employees be held responsible for any loss, damage, or injury of any character to any person, animal, vehicle, artwork, exhibit, or article while participating in the Creative Arts building at the State Fair of Texas.

All entries in this contest MUST adhere to the rules stipulated for the contest.



**HOLIDAY
CORNER
CONTEST**





HOLIDAY CORNER

CONTEST DESCRIPTION



Entrants are invited to create handcrafted items inspired by the holidays. Whether it's a sparkling ornament, a whimsical wreath, a festive centerpiece, or a clever twist on a traditional decoration, each piece should capture the joy, color, and character of the holiday it represents.

JUDGING

Entries will be judged on craftsmanship, creativity, design, and overall presentation.

ENTRY FEES (PER ITEM)

Adult Amateur (18+ yrs. of age) \$6

Juniors & Child (5-17 yrs. of age) \$4

MAXIMUM ENTRIES

Contestants may submit a maximum of six (6) entries, with only one (1) single item per category unless otherwise noted.

RIBBONS AND PRIZES

Each category will be awarded a first, second, and third place ribbon and may also include honorable mention. Best of Show is awarded for this contest. **All ages compete together in this contest.**



HOLIDAY CORNER

CONTEST RULES



- Entries must be **handmade**.
- Must not weigh over **20 lbs.**
- No edible items allowed (candy, nuts, etc.)
- Maximum size **30" L x 17" D x 15" H** (some category exceptions listed).
- Categories are for single items; no multiples unless stated.
- Hooks, wires, or brackets must be on all hanging items; no pipe cleaners for hanger.
- All wreaths must be entered in the **wreath categories only; all wreaths should be 27" or smaller.**
- No soiled or broken items.
- No clay/polymer clay/air dry clay pieces; Must be entered in ceramics (small additions with clay are allowed).
- No LEGO® builds; must be entered in Scale Models.

CATEGORIES



WREATHS

All wreaths 27" or smaller

- **G133.** Christmas/Winter
- **G134.** Easter/Spring
- **G143.** Halloween
- **G144.** Patriotic
- **G145.** Thanksgiving/Fall-Themed
- **G146.** Miscellaneous Holiday (Not Listed Above)
- **G147.** Miscellaneous (All Others)

CHRISTMAS (NO WREATHS)

- **G100.** Christmas Door Decoration
- **G101.** Christmas Stocking (Felt)
- **G102.** Christmas Stocking (Not a Kit, Original Design)
- **G103.** Christmas Stocking (Other Fabric)
- **G117.** Christmas Table Decoration
- **G118.** Christmas Tree Skirt Kit (Not to Exceed 42")
- **G107.** Christmas Tree Skirt (Original Design, Not to Exceed 42")
- **G106.** Christmas Tree Ornament (Single, No Trees)



HOLIDAY CORNER

CATEGORIES



CHRISTMAS (NO WREATHS) (CONT.)

- **G105.** Christmas Tree (Handmade of Felt, Lace, or Other Fabric, Not to Exceed 30")
- **G104.** Christmas Tree (Handmade of Wood, Tin, Wire, or Other Material, Not to Exceed 30")
- **G108.** Christmas Window Decoration
- **G114.** Decorated Wearing Apparel (Size Medium or Smaller)
- **G115.** In The Hoop Embroidery (Christmas Only)
- **G110.** Santa Claus (Big Tex-Style)
- **G109.** Santa Claus (Stuffed)
- **G111.** Santa Claus (Other Than Stuffed or Big Tex)
- **G113.** Handmade Figures (Three Pieces Maximum, Not to Exceed 15")
- **G112.** Handmade Nativity Scene (Max 3 Loose Pieces; Anything Over 3 Must Be Mounted on a Board That Meets Size Requirements.)
- **G116.** Mantel Cover Or Decoration

HALLOWEEN (NO WREATHS)

- **G135.** Door Decoration
- **G136.** Mantel Cover Or Decoration
- **G137.** Mask (Only One, No Multiples)
- **G138.** Pillow (16" X 16" Maximum)
- **G139.** Table Decoration
- **G140.** Wall Decoration
- **G141.** Wearing Apparel (Up To Child Size 6)
- **G142.** Miscellaneous (No Wreaths)

VARIOUS (NO WREATHS)

- **G123.** Any Holiday Decoration Mixed With State Fair Theme
- **G119.** Any Patriotic Decoration
- **G120.** Cinco De Mayo Decoration
- **G121.** Easter/Spring Decoration
- **G122.** Hanukkah Decoration
- **G124.** Mardi Gras Decoration
- **G125.** Pillow (16" X 16" Maximum)
- **G126.** Placemat (Handmade, Maximum 12" X 15")
- **G127.** Runner (Handmade, Not to Exceed 60")
- **G128.** St. Patrick's Day Decoration
- **G132.** Table/Mantle Decoration (Not Christmas or Halloween)
- **G129.** Thanksgiving Decoration
- **G130.** Valentine's Day Decoration
- **G131.** Wall Decoration (Any Material; No Wreaths)

Due to space constraints, all items will be displayed according to our designers' prerogative.

It must be distinctly understood that in no case shall the State Fair of Texas, its directors, officers, or employees be held responsible for any loss, damage, or injury of any character to any person, animal, vehicle, artwork, exhibit, or article while participating in the Creative Arts building at the State Fair of Texas.

All entries in this contest MUST adhere to the rules stipulated for the contest.



NEEDLEWORK CONTEST





NEEDLEWORK

CONTEST DESCRIPTION



The Decorative Needlework Competition invites exhibitors to showcase their creativity, skill, and attention to detail through the art of cross stitch, embroidery, and all things having to do with artistic stitches. This competition celebrates patience, precision, and artistic expression, and is open to stitchers of all experience levels. Please note there is a counted cross stitch sampler category. A **cross stitch sampler** is a small practice piece used to learn and demonstrate different stitches, techniques, and motifs. It may include simple designs, patterns, or lettering, and often features traditional elements like flowers, houses, or symbols. Originally used for learning, samplers are now creative keepsakes that showcase a stitcher's skill. A sampler is not an elaborate alphabet.

JUDGING

Entries will be judged on craftsmanship and skill, creativity, design, and finishing.

ENTRY FEES (PER ITEM)

Adult Amateur (18+ yrs. of age) \$6

Teachers & Professionals (18+ yrs. of age) \$6

Juniors (13-17 yrs. of age) \$4

Child (5-12 yrs. of age) \$4

MAXIMUM ENTRIES

Contestants may submit a maximum of six (6) entries, with only one (1) entry per category.

RIBBONS AND PRIZES

First, second, third, and honorable mention will be awarded in each category. Best of Show awarded for each division.



NEEDLEWORK

CONTEST RULES



- All entries must be blocked.
- Proper hanging equipment must be included on all hanging objects.
- Items from previous years may not be re-entered or submitted.
- No machine embroidery allowed

CATEGORIES



ADULT AMATEUR

COUNTED CROSS STITCH

For Reference:

Picture: 9" X 13" = 117 sq. in. Excluding Frame

Picture: 15" X 24" = 360 sq. in. Excluding Frame

Picture: 18" X 36" = 648 sq. in. Excluding Frame

- **H135.** Christmas Stocking (Up to 13 Stitches per Inch)
- **H134.** Christmas Stocking (Over 14 to 18 Stitches per Inch)
- **H136.** Counted Cross Stitch Sampler (See definition in contest description)
- **H121.** Picture Not Over 117 sq. in. (Up to 13 Stitches per Inch)
- **H122.** Picture 118 to 360 sq. in. (Up to 13 Stitches per Inch)
- **H123.** Picture 361 to 648 sq. in. (Up to 13 Stitches per Inch)
- **H124.** Any Other Article of Counted Cross Stitch (Up to 13 Stitches per Inch)
- **H125.** Picture Not Over 117 sq. in. (14 to 18 Stitches per Inch)
- **H126.** Picture 118 to 360 sq. in. (14 to 18 Stitches per Inch)
- **H127.** Picture 361 to 648 sq. in. (14 TO 18 Stitches per Inch)
- **H128.** Any Other Article of Counted Cross Stitch (14 to 18 Stitches per Inch)
- **H129.** Picture Not Over 117 sq. in. (OVER 18 Stitches per Inch)
- **H130.** Picture 118 to 360 sq. in. (OVER 18 Stitches per Inch)
- **H131.** Picture 361 to 648 sq. in. (Over 18 Stitches per Inch)
- **H133.** Pillow



NEEDLEWORK

CATEGORIES



EMBROIDERY-SPECIALTY STITCHES

Stamped Design, No Counted Cross Stitch

- **H142.** Baby Blanket
- **H138.** Pillow
- **H141.** Other (Single Item Only)
- **H139.** Pillowcase
- **H140.** Runner

Not Stamped Design, No Counted Cross Stitch

- **H149.** Black Work
- **H145.** Foreign Embroidery (Brazilian, Japanese, etc.)
- **H143.** Ribbon Embroidery
- **H147.** Red Work
- **H148.** Hoop Embroidery
- **H144.** Surface Embroidery with Metal & Silk
- **H150.** White Work
- **H146.** Household Item
- **H151.** Embroidery (Any Other)

CREWEL

Not eligible for Best of Show

- **H119.** Picture (9" X 12" to 12" X 36")
- **H120.** Any Other Article

PLASTIC CANVAS

- **H117.** Single Item
- **H118.** Any Other (Not to Exceed Three Pieces)

NEEDLEPOINT

The following are embroidery done on canvas

Needlepoint: Up to 16 stitches per inch

Petit Point: 18 or more stitches per inch

Bargello: Straight vertical or straight horizontal, miscellaneous stitches per inch

Projects: Taken in a class or with a stitch guide

NEEDLEPOINT PAINTED CANVAS

Design prepared by someone other than the one doing needlework.

- **H105.** Accessory
- **H102.** Picture (Geometric Design, Not Over 648 sq. in.)
- **H107.** Weighted Figure (Under 12")
- **H104.** Christmas Stocking
- **H106.** Pillow
- **H108.** Weighted Figure (Over 12")
- **H100.** Picture (Not Over 108 sq. in.)
- **H103.** Purse/Clutch/Tote
- **H109.** Any Other
- **H101.** Picture (Not Over 648 sq. in.)



NEEDLEWORK

CATEGORIES



NEEDLEPOINT PETIT POINT

- H112. Christmas Stocking
- H110. Picture (Not Over 108 sq. in.)
- H111. Picture (Not Over 648 sq. in.)
- H113. Pillow
- H114. Weighted Figure
- H115. Any Other

BARGELLO NEEDLEPOINT

- H1116. Any Other

TEACHERS & PROFESSIONALS

- H152. Counted Cross Stitch
- H154. Embroidery- Speciality Stitches
- H153. Needlepoint

JUNIOR

- H155. Counted Cross Stitch
- H157. Embroidery/Crewel
- H156. Needlepoint

CHILD

- H158. Any Cross Stitch, Embroidery, Needlepoint

Due to space constraints, all items will be displayed according to our designers' prerogative.

It must be distinctly understood that in no case shall the State Fair of Texas, its directors, officers, or employees be held responsible for any loss, damage, or injury of any character to any person, animal, vehicle, artwork, exhibit, or article while participating in the Creative Arts building at the State Fair of Texas.

All entries in this contest MUST adhere to the rules stipulated for the contest.



PHOTOGRAPHY CONTEST





PHOTOGRAPHY

CONTEST DESCRIPTION



This competition invites hobbyists and aspiring photographers to showcase their unique perspective. Participants may submit original photographs that highlight creativity, technical skill, and thoughtful composition. Whether it's a striking landscape, a candid portrait, or an unexpected detail, each image should tell a story and reflect the photographer's personal vision. All entries must be appropriate for family viewing.

JUDGING

Entries will be judged on creativity and originality of the image and concept, composition, technical quality, and presentation of the subject.

ENTRY FEES (PER ITEM)

Adult Amateur (18+ yrs. of age) \$6

Teachers & Professionals (18+ yrs. of age) \$6

Juniors (13-17 yrs. of age) \$4

Child (5-12 yrs. of age) \$4

MAXIMUM ENTRIES

Contestants may submit a maximum of six (6) entries, with only one (1) entry per category.

RIBBONS AND PRIZES

Each category will be awarded a first, second, and third place ribbon and may also include honorable mention. Best of Show is awarded in the following age divisions: Adult (Color and Black & White), Teacher & Professionals (Color and Black & White), and Junior (Color and Black & White).



PHOTOGRAPHY

SPECIAL PRIZES

TEXAS BEEKEEPERS ASSOCIATION OFFICIAL SPONSOR FOR



Adult Color K113 – Honey Bees

Junior Color K169 – Honey Bees

\$50 to each Category for First Place.

SPECIAL PRIZES

CIRCLE R RANCH WEAR AWARD CATEGORY:



Adult Color Color K121 – Western Wear

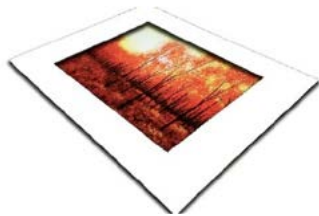
Resistol Straw Hat and Custom Fitting.
Must be redeemed during the 2026 Fair.

CONTEST RULES



- **Size and mount:**
 - › Each photo must be **8"X10"** or **11"X14"**.
 - › All photos mounted on **11"X14"** foam core or mat board.
 - › **8"x10"** photos must have mat. **All entered works must be 11"X14"**.

- Example:



8"x10" photo on 11"x14" board with mat



11"x14" photo on 11"x14" board
no mat needed

- No metal printing.
- No glass, frames, hangers, or brackets.
- No date, timestamp, or name on front of photo.
- No broken or damaged entries.
- Photograph label form on back of all entries. Example on the right.
- Same photo cannot be entered in multiple categories or multiple years.
- All photographic exposure must be captured by the entrant, with editing permitted only when specified by the category.

PHOTOGRAPH LABEL FORM	
Fill in the label form & tape or glue to the front or mat board (backside of your photograph).	
NAME	
DIVISION (CHECK ONE) - JUNIOR OR CHILD MUST INCLUDE AGE	
<input type="checkbox"/> ADULT <input type="checkbox"/> JUNIOR <input type="checkbox"/> CHILD <input type="checkbox"/> PROFESSIONAL	
AGE	AGE
ADDRESS	
CITY	STATE ZIP
DAYTIME PHONE	
EMAIL	
CATEGORY NUMBER	
DATE TAKEN & LOCATION OF PHOTO	



PHOTOGRAPHY

CATEGORIES



ADULT AMATEUR

COLOR

No AI or altered photos in these categories.

- **K116.** Abstract
- **K111.** Action Or Movement
- **K119.** Architectural Features / Buildings / Monuments
- **K101.** Animals (Domestic)
- **K100.** Animals (Wildlife)
- **K102.** Birds
- **K115.** Bluebonnets
- **K114.** City Scenes
- **K125.** Cultural
- **K106.** Child (Preschool)
- **K107.** Child (School Age)
- **K108.** Children (Two (2) or More)
- **K103.** Fish/Reptiles/Marine Life
- **K104.** Flora (Close Up)
- **K105.** Flora (Vista)
- **K126.** Food
- **K123.** Holidays
- **K113. Honey Bees**
- **K112.** Insects
- **K127.** International Travel
- **K124.** Patriotic (Military/Flags/ First Responders)
- **K109.** People
- **K110.** Rural (Farm or Ranch Life)
- **K117.** Scenery (Landscapes / Waterscapes)
- **K118.** Skies (Sunrise / Sunset / Weather)
- **K122.** State Fair Theme
- **K120.** Still Life
- **K121. Western Wear**

BLACK & WHITE

No AI or altered photos in these categories.

- **K138.** Action/Movement (Sports)
- **K129.** Animals
- **K136.** Architectural Features/ Buildings/Monuments
- **K131.** Child/Children
- **K139.** Cultural
- **K130.** Flora (Close-Up or Vista)
- **K132.** People
- **K137.** Scenery (Landscapes/ Waterscapes)
- **K134.** State Fair Theme
- **K133.** Still Life
- **K135.** Rural/City Scenes/Activities

SPECIAL CATEGORY

Not eligible for Best of Show.

- **K141.** Color or Black & White Photograph That has Been Altered or Manipulated in a Photographic Digital or Manual Process.



PHOTOGRAPHY

CATEGORIES



TEACHERS & PROFESSIONALS

COLOR

No AI or altered photos.

- **K143.** Animals
- **K145.** People
- **K147.** Any Other Subject
- **K146.** Landscape
- **K144.** Portrait

BLACK & WHITE

No AI or altered photos

- **K148.** Animals
- **K150.** People
- **K152.** Any Subject
- **K151.** Landscape
- **K149.** Portrait

JUNIOR

COLOR

- **K165.** Abstract
- **K159.** Cultural
- **K158.** Scenery (Landscapes/Waterscapes)
- **K157.** Action Or Movement
- **K160.** Flora (Close-Up or Vista, All Plant Life Including Fungi Etc.)
- **K170.** Skies (Sunrise/Sunset/Weather)
- **K154.** Animals (Domestic)
- **K169.** Honey Bees
- **K168.** State Fair Theme
- **K153.** Animals (Wildlife)
- **K162.** Insects
- **K166.** Still Life
- **K164.** Architectural Features/Buildings/Monuments
- **K161.** Rural/City Scenes/Activities
- **K155.** Birds/Fish/Reptile/Marine Life
- **K163.** Patriotic (Military/Flags/First Responders)
- **K167.** Bluebonnets
- **K156.** People

BLACK & WHITE

- **K173.** Animals
- **K174.** Flora (Close-Up or Vista, All Plant Life)
- **K177.** People
- **K176.** Architectural Features/Buildings/Monuments
- **K178.** Landscapes
- **K175.** Rural/City Scenes/Activites



PHOTOGRAPHY

CATEGORIES



CHILD

COLOR OR BLACK & WHITE

Not eligible for Best of Show.

- K179. Animals
- K172. Close Up of Any Object
- K182. Landscape
- K181. People
- K180. Any Other Subject

Due to space constraints, all items will be displayed according to our designers' prerogative.

It must be distinctly understood that in no case shall the State Fair of Texas, its directors, officers, or employees be held responsible for any loss, damage, or injury of any character to any person, animal, vehicle, artwork, exhibit, or article while participating in the Creative Arts building at the State Fair of Texas.

All entries in this contest MUST adhere to the rules stipulated for the contest.

PHOTOGRAPH LABEL FORM

Fill out the label form & tape or glue to the foam or mat board backing of your photograph.

NAME	
------	--

DIVISION (CHECK ONE) - JUNIOR OR CHILD MUST INCLUDE AGE

ADULT JUNIOR CHILD PROFESSIONAL

AGE: _____ AGE: _____ AGE: _____ AGE: _____

ADDRESS: _____

CITY: _____ STATE: _____ ZIP: _____

DAYTIME PHONE: _____

EMAIL: _____

CATEGORY NUMBER: _____

DATE TAKEN & LOCATION OF PHOTO: _____

PHOTOGRAPH LABEL FORM

Fill out the label form & tape or glue to the foam or mat board backing of your photograph.

NAME	
------	--

DIVISION (CHECK ONE) - JUNIOR OR CHILD MUST INCLUDE AGE

ADULT JUNIOR CHILD PROFESSIONAL

AGE: _____ AGE: _____ AGE: _____ AGE: _____

ADDRESS: _____

CITY: _____ STATE: _____ ZIP: _____

DAYTIME PHONE: _____

EMAIL: _____

CATEGORY NUMBER: _____

DATE TAKEN & LOCATION OF PHOTO: _____

PHOTOGRAPH LABEL FORM

Fill out the label form & tape or glue to the foam or mat board backing of your photograph.

NAME	
------	--

DIVISION (CHECK ONE) - JUNIOR OR CHILD MUST INCLUDE AGE

ADULT JUNIOR CHILD PROFESSIONAL

AGE: _____ AGE: _____ AGE: _____ AGE: _____

ADDRESS: _____

CITY: _____ STATE: _____ ZIP: _____

DAYTIME PHONE: _____

EMAIL: _____

CATEGORY NUMBER: _____

DATE TAKEN & LOCATION OF PHOTO: _____

PHOTOGRAPH LABEL FORM

Fill out the label form & tape or glue to the foam or mat board backing of your photograph.

NAME	
------	--

DIVISION (CHECK ONE) - JUNIOR OR CHILD MUST INCLUDE AGE

ADULT JUNIOR CHILD PROFESSIONAL

AGE: _____ AGE: _____ AGE: _____ AGE: _____

ADDRESS: _____

CITY: _____ STATE: _____ ZIP: _____

DAYTIME PHONE: _____

EMAIL: _____

CATEGORY NUMBER: _____

DATE TAKEN & LOCATION OF PHOTO: _____

PHOTOGRAPH LABEL FORM

Fill out the label form & tape or glue to the foam or mat board backing of your photograph.

NAME	
------	--

DIVISION (CHECK ONE) - JUNIOR OR CHILD MUST INCLUDE AGE

ADULT JUNIOR CHILD PROFESSIONAL

AGE: _____ AGE: _____ AGE: _____ AGE: _____

ADDRESS: _____

CITY: _____ STATE: _____ ZIP: _____

DAYTIME PHONE: _____

EMAIL: _____

CATEGORY NUMBER: _____

DATE TAKEN & LOCATION OF PHOTO: _____

PHOTOGRAPH LABEL FORM

Fill out the label form & tape or glue to the foam or mat board backing of your photograph.

NAME	
------	--

DIVISION (CHECK ONE) - JUNIOR OR CHILD MUST INCLUDE AGE

ADULT JUNIOR CHILD PROFESSIONAL

AGE: _____ AGE: _____ AGE: _____ AGE: _____

ADDRESS: _____

CITY: _____ STATE: _____ ZIP: _____

DAYTIME PHONE: _____

EMAIL: _____

CATEGORY NUMBER: _____

DATE TAKEN & LOCATION OF PHOTO: _____



SCALE

 **MODELS** 

CONTEST





SCALE MODELS

CONTEST DESCRIPTION



This contest celebrates creativity, craftsmanship, and attention to detail. It is open to all builders who enjoy bringing miniature worlds to life—whether through LEGO® creations, dioramas, traditional scale model kits, or fully scratch-built projects. Entries should demonstrate thoughtful design, structural skill, and overall presentation. All small pieces should be securely attached or they may become lost. Due to limited display area, each entrant is encouraged to build as small as is practical for the subject.

JUDGING

Entries will be judged on craftsmanship, level of detail and complexity/difficulty, accuracy, creativity and design, and overall presentation.

ENTRY FEES (PER ITEM)

Adult Amateur (18+ yrs. of age) \$6

Juniors (13-17 yrs. of age) \$4

Child (4-12 yrs. of age) \$4

MAXIMUM ENTRIES

Contestants may submit a maximum of six (6) entries, with only one (1) entry per category.

RIBBONS AND PRIZES

Each category will be awarded a first, second, and third place ribbon and may also include honorable mention. Best of Show will be awarded per division.



SCALE MODELS

CONTEST RULES



- Entries, including their base, must not exceed 18" L, 18" W, and 18" H in size and 20 lbs. in weight unless noted in category details.
- Ship categories require entry no larger than 30" L, 30" H, 18" D.
- No loose or broken pieces.
- Must have been completed by the contestant in the past two years.
- Must be securely mounted.
- Each category has specific guidelines.

CATEGORIES



ADULT AMATEUR

KIT

- The model must be built from a single commercial kit as the kit manufacturer intended
 - Color schemes and markings may be changed; minor structural changes and nominal addition of non-kit components may be made to correct, change, or improve detail
 - Entries are judged on the complexity of the original kit, accuracy of representation, overall workmanship, and total impression of the model
- **L100.** Aircraft
 - **L138.** Dollhouse/Miniature Room
 - **L105.** Figure (No More Than Three (3))
 - **L104.** Ship (Powered)
 - **L103.** Ship (Sails)
 - **L102.** Tracked Vehicle
 - **L101.** Wheeled Vehicle
 - **L106.** Any Other Subject



SCALE MODELS

CATEGORIES



KIT CONVERSION

- The model must demonstrate the use of components of commercial kits combined with hand-built parts and significant structural changes to kit components
 - “Super-detailed stock” kits will be accepted in this section
 - The entrant should submit a statement of the general work involved in constructing the model
 - Entries are judged on the difficulty of technique, amount of handwork involved, overall workmanship, and total impression of the model
- **L107.** Any Subject

SCRATCH BUILT

- The model must be a scale representation of a full-size prototype
 - Kit components and commercial parts may be used only in an incidental manner
 - The entrant should submit a statement describing the general features of the work involved in the model
 - Entries are judged on the originality of the subject, accuracy of representation, overall workmanship, and total impression of the model
- **L110.** Box Rooms (Any Material[s])
 - **L117.** Figures (Not To Exceed 25 In Number)
 - **L112.** Non-Scale (Any Material[s])
 - **L108.** Primarily Metal
 - **L113.** Primarily Paper
 - **L109.** Primarily Wood
 - **L116.** Scale Buildings / Houses
 - **L118.** Shoe Box Parade Float (State Fair Theme)
 - **L111.** Shops (Retail, Repair, Etc.)
 - **L114.** Wheeled Vehicle
 - **L115.** Any Other Material(s)

DIORAMA

- Commercial pre-built components may be used as required
 - Entries are judged as a whole, based on the originality of the subject, complexity, overall workmanship, and total impression of the scene
- **L122.** Any Use Of State Fair Theme
 - **L149.** Dollhouse
 - **L151.** Gourds (Artificial Only)
 - **L120.** Military Theme (Before 1900)
 - **L121.** Military Theme (1900 To Present Day)
 - **L119.** Non-Military Theme
 - **L123.** Whimsical Or Fantasy Scene
 - **L150.** Any Other Subject



SCALE MODELS

CATEGORIES



LEGO®

- Scratch built – no kits, should be glued/secured

- L124. Adult Lego® Original Design

JUNIOR

KIT

- Models are to be constructed from commercial kits
- Entries are judged on craftsmanship and total impression of the model

- L125. Aircraft
- L126. Wheeled / Tracked Vehicle
- L127. Ship (Sails)/(Powered)
- L128. Any Other Subject

KIT CONVERSION

- The model must demonstrate the use of components of commercial kits combined with hand-built parts and significant structural changes to kit components
- “Super detailed stock” kits will be accepted in this section
- The entrant should submit a statement of the general work involved in constructing the model
- Entries are judged on the difficulty of technique, amount of handwork involved, overall workmanship, and total impression of the model

- L129. Any Subject

SCRATCH BUILT

- Models may represent the builder’s impression of any subject and not necessarily need to be of a real object.
- Entries are judged on the originality of the subject, complexity, overall craftsmanship, and total impression of the model

- L131. Models Built From Kit Parts
- L132. Shoebox Parade Float (All Other Themes)
- L130. Models Built From Raw Materials (Wood, Paper, etc.)
- L133. Shoebox Parade Float (State Fair Theme)



SCALE MODELS

CATEGORIES



DIORAMA

- Commercial pre-built components may be used as required
 - No diorama component may be entered in any other category
 - Diorama entries are judged as a whole, based on the originality of the subject, complexity, overall workmanship, and total impression of the scene
- **L134.** Military Theme
 - **L135.** Non-Military Theme

LEGO®

- Scratch built – no kits, should be glued/secured
- **L136.** Junior Lego® Original Design

CHILD

- Judging of entries in this section will be based on overall craftsmanship, and total impression of the model
 - All assemblies must be glued/secured or pieces may become lost
- **L142.** Diorama Any Theme
 - **L141.** Shoebox Parade Float (State Fair Theme)
 - **L139.** State Fair Theme (No Lego)
 - **L137.** Kits Any Subject (No Lego)
 - **L140.** Shoebox Parade Float (All Other Themes)
 - **L138.** Scratch Built Any Subject (No Lego)

LEGO®

- All assemblies must be glued/secured or pieces may become lost
- **L143.** Kits (4 yrs.-6 yrs.)
 - **L146.** Original Designs (4 yrs.-6 yrs.)
 - **L148.** Original Designs (10 yrs.-12 yrs.)
 - **L144.** Kits (7 yrs.-9 yrs.)
 - **L147.** Original Designs (7 yrs.-9 yrs.)
 - **L145.** Kits (10 yrs.-12 yrs.)

Due to space constraints, all items will be displayed according to our designers' prerogative. It must be distinctly understood that in no case shall the State Fair of Texas, its directors, officers, or employees be held responsible for any loss, damage, or injury of any character to any person, animal, vehicle, artwork, exhibit, or article while participating in the Creative Arts building at the State Fair of Texas. All entries in this contest MUST adhere to the rules stipulated for the contest.



SCULPTURE CONTEST





SCULPTURE

CONTEST DESCRIPTION



This is a contest for three-dimensional works of art made from the specified materials listed in the categories. Designs may embody freestanding objects or reliefs on surfaces. These sculptures should be your original designs, handcrafted by you and appropriate for family viewing. Large and heavy pieces are difficult to fit in our showcases safely, so please adhere to the size and weight limits.

JUDGING

Entries will be judged on craftsmanship and technical skill, creativity, design, and overall presentation.

ENTRY FEES (PER ITEM)

Adult Amateur (18+ yrs. of age) \$6

Teachers & Professionals (18+ yrs. of age) \$6

Juniors (13-17 yrs. of age) \$4

Child (5-12 yrs. of age) \$4

MAXIMUM ENTRIES

Contestants may submit a maximum of six (6) entries, with only one (1) entry per category.

RIBBONS AND PRIZES

Each category will be awarded a first, second, and third place ribbon and may also include honorable mention. Best of Show will be awarded per division.



SCULPTURE

CONTEST RULES



- Max size 18" x 18" x 18".
- Max weight 10 lbs.
- Display for item is provided by contestant (i.e. hanging hardware for hanging item, jewelry display for jewelry, plate rack for ceramic plate, etc.)
- No food items.

CATEGORIES



ADULT AMATEUR

CERAMIC SCULPTURE

Ceramic material including clay and earthenware; no concrete or like materials accepted.

SURFACE DECORATIONS

- **B100.** Add-Ons (Low Relief)
- **B101.** Glaze Application (Original Painted Glaze Design, Cool Glaze Effect, etc.)
- **B102.** Incised (Pierced Pattern Cutouts)
- **B103.** Sgraffito
- **B104.** Texture
- **B105.** Miscellaneous (Decals, Stencils, etc.)

WHEEL

- **B106.** Wheel Thrown Altered (Began on Wheel and was Altered After)
- **B107.** Wheel Thrown not Altered (As is Straight Off the Wheel)

ORIGINALS IN CLAY

- **B108.** Holiday
- **B109.** Plate
- **B110.** Raku
- **B111.** Sculptural (Not Slab, Figural)
- **B112.** Slab, Pinch, Coil Build
- **B113.** Vessel (Bowl, Cup, Vase, Pitcher, etc.)
- **B114.** Miscellaneous

POLYMER/AIR DRY CLAY

- **B115.** Jewelry
- **B116.** Sculpture
- **B114.** Miscellaneous



SCULPTURE

CATEGORIES



METALS SCULPTURE

- **B118.** Upcycled Metal Sculptures (Horse Shoes, Nuts and Bolts, etc.)
- **B119.** Precious Metals and/or Stones
- **B120.** Miscellaneous (Forged, etc.)

WOOD

- **B121.** Boxes and Chests (All Shapes)
- **B122.** Carved Figures 3D
- **B123.** Carved Figures Relief (Low or High, Includes Intarsia)
- **B124.** Everyday Objects Carved Deautifully of Wood (Birdfeeders, Canes, etc.)
- **B125.** Miscellaneous

ASSEMBLAGE

- **B126.** Free Standing 3D (Viewed from All Sides, Can be Found Objects or Hand Made from Various Materials)
- **B127.** Relief (Low or High, Viewed from Front, Could Hang on Wall, Can be Found Objects or Handmade from Various Materials)

GLASS

- **B128.** Fused Glass
- **B129.** Slumping
- **B130.** Miscellaneous (Blown Glass, Flameworking, etc.)

PAPER

- **B131.** Origami
- **B132.** Papier-Mâché
- **B133.** Paper Sculpture

OTHER

- **B135.** 3D Fabrication: 3D Printer Sculptures, Could Also Include Laser Cut Assembly.
- **B136.** General Miscellaneous: Any Sculpture not Listed Above.
- **B137.** Large Sculpture Category: All Mediums, Max Size 24" x 24" x 18", Max Weight 20lbs.



SCULPTURE

CATEGORIES



TEACHER AND PROFESSIONALS

ORIGINALS IN

- B138. Clay
- B139. Glass
- B140. Metal
- B141. Wood
- B142. Miscellaneous

JUNIORS

ORIGINALS IN

- B143. Assemblage (Sculpture Made from Found Objects or Handmade Objects of Various Materials.)
- B144. Clay
- B145. Paper
- B146. Wood
- B147. Miscellaneous

CHILD

ORIGINALS IN

- B148. Assemblage (Sculpture Made from Found Objects or Hand Made Objects of Various Materials.)
- B149. Clay
- B150. Paper (All Kinds)
- B151. Miscellaneous



SEWING & QUILTING CONTEST





SEWING & QUILTING

CONTEST DESCRIPTION



This competition highlights beautifully sewn items of all kinds — from garments and accessories to home décor pieces such as table runners, appliqué work, and of course, quilts! All entries must be appropriate for family viewing. The entire design may not be displayed in the case due to space constraints, and not all quilts will be displayed by hanging. An applique work consists of pieces of fabric, cut into shapes that are sewn or fused onto a larger background fabric to create designs, pictures, and patterns. It often has edges turned under or finished with stitching. Applique is notably different than hand or machine embroidery.

JUDGING

Entries will be judged on craftsmanship and quality, creativity, design, and overall presentation.

ENTRY FEES (PER ITEM)

Adult Amateur (18+ yrs. of age) \$6

Teachers & Professionals (18+ yrs. of age) \$6

Juniors (13-17 yrs. of age) \$4

Child (5-12 yrs. of age) \$4

MAXIMUM ENTRIES

Contestants may submit a maximum of six (6) entries, with only one (1) entry per category.

RIBBONS AND PRIZES

Each category will be awarded a first, second, and third place ribbon and may also include honorable mention. Best of Show is awarded in Adult Amateur and Junior divisions in quilts.



SEWING & QUILTING

CONTEST RULES



- No soiled articles.
- No glue or allowed.
- No dress forms or mannequins used as displays.
- May use fusible facing and interfacing material.
- All loose threads must be trimmed.
- All quilts must be pieced and quilted by one (1) person except in the two-or-more person categories.

CATEGORIES



ADULT AMATEUR

- **I100.** Adult Apparel (One (1)+ Pieces)
- **I101.** Adult Apparel Special Occasion
- **I102.** Applique (Examples: Applique onto Pillows, Vests, Curtains, etc.)
- **I103.** Backpacks
- **I104.** Children's Apparel (One (1)+ Pieces)
- **I105.** Christening Dresses
- **I106.** Costumes (Child to Adult Sizes, No Street Clothes or Everyday Wear)
- **I107.** Doll Clothes
- **I108.** Duffle Bags
- **I109.** Fabric (Dyed/Painted/Printed)
- **I110.** Handbags
- **I111.** Handsewn Item (Not Quilts)
- **I112.** Quilted Mug Rug (Not Over 10"x10")
- **I113.** Quilted Pillow (Not Over 16"x16")
- **I114.** Quilted Wall Hanging (Not Over 36"x36")
- **I115.** Runner
- **I116.** Sewn Rugs (Made of Fabric)
- **I117.** Smocking (Any Article)
- **I118.** Tote Bag
- **I119.** Any Other Article Not Listed (No Wall Hangings, Rugs, Quilts, etc.)
- **I120.** Any Other Bag Not Listed



SEWING & QUILTING

CATEGORIES



QUILTS

Minimum of 72" long

Entries must be king, queen, double, or twin bed size only

No embroidered or whole cloth quilts made from pre-stamped kits

No tie quilts or coverlet

- **I121.** Applique (Hand Quilted)
- **I122.** Applique (Machine Quilted)
- **I123.** Combination (Hand Quilted)
- **I124.** Combination (Machine Quilted)
- **I125.** Patchwork (Hand Quilted)
- **I126.** Patchwork (Machine Quilted)
- **I127.** State Fair Theme (Hand/Machine Quilted)
- **I128.** Two-Person Hand/Machine Quilted (Category Not Eligible for Best of Show)
- **I129.** Group Quilt Hand/Machine Quilted (Three (3)+ Persons; Category Not Eligible for Best of Show)

BEDSPREADS

Minimum of 72" long

Not eligible for Best in Show

No charms or trinkets attached

- **I130.** Family Album (T-Shirts, Scanned Photo, etc.)
- **I131.** Quilted/Patchwork

INFANT/TODDLER

Minimum of 42" x 42" or 1764 sq. in.

Not eligible for Best in Show

- **I132.** Applique
- **I133.** Combination
- **I134.** Patchwork
- **I135.** State Fair Theme



SEWING & QUILTING

CATEGORIES



TEACHERS & PROFESSIONALS

- I136. Garment (Any)
- I137. Sewing Machine Articles (Any; No Quilts)

JUNIOR

- I138. Apparel (One (1)+ Pieces)
- I139. Bag (Any)
- I140. Fabric (Dyed/Painted/Printed)
- I141. Pillow (Not Over 16" x 16")
- I142. Quilt
- I143. Miscellaneous Sewn Article

CHILD

- I144. Apparel (One (1)+ Pieces)
- I145. Accessories
- I146. Fabric (Dyed/Painted/Printed)
- I147. Quilt
- I148. Two-or-More Person Quilt



YARN



CONTEST





YARN

CONTEST DESCRIPTION



This competition showcases handmade items crafted from traditional and alternate fibers, yarn, wool — from intricate knit and crochet projects to woven, felted, or other fiber-based designs. Whether it's a delicate lace shawl, a colorful afghan, or a whimsical wool sculpture, each piece should highlight the maker's skill and imagination.

JUDGING

Entries will be judged on craftsmanship, creativity, design, and overall presentation.

ENTRY FEES (PER ITEM)

Adult Amateur (18+ yrs. of age) \$6

Teachers & Professionals (18+ yrs. of age) \$6

Juniors (13-17 yrs. of age) \$4

Child (5-12 yrs. of age) \$4

MAXIMUM ENTRIES

Contestants may submit a maximum of six (6) entries, with only one (1) entry per category.

RIBBONS AND PRIZES

Each category will be awarded a first, second, and third place ribbon and may also include honorable mention. Best of Show is awarded in each division.



YARN

CONTEST RULES



- No glued items.
- Must adhere to size regulations.
- Afghans must be blocked.
- Items should be blocked if knitted or crocheted.

CATEGORIES



ADULT AMATEUR

- **J100.** 2D Hand Felted (From Scratch with Wool)
- **J101.** 3D Hand Felted (From Scratch with Wool)
- **J102.** Felt Craft Using Purchased Felt
- **J103.** Hand Hook (Any Other Article Not Listed)
- **J104.** Hand Hooked Rugs (Any Cut, 30" x 30" Max)
- **J105.** Hand Hooked Wall Hanging (Includes Contemporary, 30" x 30" Max, Framed or Unframed)
- **J106.** Latch Hook (Any Article)
- **J107.** Needle Punch (Any Article)
- **J108.** State Fair Themed (Any Yarn or Wool Creation)
- **J109.** Tatting/Macrame
- **J110.** Woven Items

CROCHET

- **J111.** Afghan Large (50" x 70" and Over Excluding Fringe)
- **J112.** Afghan Small (Less Than 50" x 70" Excluding Fringe)
- **J113.** Afghan Baby/Toddler (34" x 36" to 39" x 41")
- **J114.** Bag (Purse, Tote, etc.)
- **J115.** Doilies 12" (No Frame)
- **J116.** Doilies 18" (No Frame)
- **J117.** Doilies 24" (No Frame)
- **J118.** Hat
- **J119.** Original Design (Any Article)
- **J120.** Runner
- **J121.** Scarf (All Kinds)
- **J122.** Shawl/Stole
- **J123.** Stuffed Animal Pattern 29" Under
- **J124.** Stuffed Other Than Animal Pattern 29" Under
- **J125.** Stuffed Animal or Toy Original Design 29" Under
- **J126.** Sweater (All Types and Ages)
- **J127.** Vest
- **J128.** Young Child Articles of Clothing (0-8 yrs.)
- **J129.** Any Article of Clothing Not Mentioned
- **J130.** Miscellaneous Crochet Not Mentioned (No Afghans)



YARN

CATEGORIES



KNITTING

- **J131.** Afghan Large (50" x 70" and Over Excluding Fringe)
- **J132.** Afghan Small (less than 50" x 70" Excluding Fringe)
- **J133.** Afghan Baby/Toddler (34" x 36" to 39" x 41")
- **J134.** Hat
- **J135.** Original Design (Any Article)
- **J136.** Scarves
- **J137.** Shawl/Stole
- **J138.** Socks
- **J139.** Stuffed Animal or Toy Pattern 29" Under
- **J140.** Stuffed Animal or Toy Original Design 29" Under
- **J141.** Sweater (All Types and Ages)
- **J142.** Any Article of Clothing Not Mentioned
- **J143.** Miscellaneous Knitting Not Mentioned (No Afghans; Includes Lace, Poncho, etc.)

TEACHERS AND PROFESSIONALS

- **J144.** Afghan Large Knit or Crochet (50" x 70" and Over Excluding Fringe)
- **J145.** Afghan Small Knit or Crochet (Less Than 50"x70" Excluding Fringe)
- **J146.** Crochet/Knit (Any Article)

JUNIORS

- **J147.** Crochet/Knit Afghan
- **J148.** Crochet/Knit Articles of Clothing
- **J149.** Crochet/Knit Bags, Totes, Purses, Accessories
- **J150.** Crochet/Knit Hat
- **J151.** Crochet/Knit Stuffed Toys & Animals
- **J152.** Crochet/Knit Miscellaneous
- **J153.** Things Made of Felt or Wool

CHILD

- **J154.** Crochet/Knit (Any Article)
- **J155.** Any Felt or Wool Craft