

---

STATE FAIR OF TEXAS®

---

 **2024** 

*Cooking*

**CONTEST**

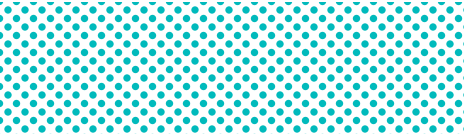
 **GUIDE**   
   
 

[BIGTEX.COM/CREATIVE](http://BIGTEX.COM/CREATIVE)

# STATE FAIR OF TEXAS

## ★ 2024 COOKING CONTEST GUIDE ★

- HOW TO ENTER GUIDE.....03**
  - WHERE TO BEGIN .....03
  - WHO CAN ENTER .....04
- COOKING CONTEST SCHEDULE ..... 05**
- BATTLE FOR THE BLUE RIBBONS ..... 06**
- COOKING CONTESTS {DURING-FAIR} .....07**
  - RULES & GUIDELINES .....07
  - CAKE CONTEST.....08
  - COOKIE CONTEST ..... 10
  - PIE CONTEST .....12
  - BREAD CONTEST.....14
  - COOKING WITH CHEESE CONTEST .....16
  - HONEY, THE MAGIC INGREDIENT.....18
  - BEEKEEPERS HONEY CONTEST .....20
  - FARM TO FORK CONTEST .....24
  - CHOCOLATE CONTEST .....26
  - PIZZA COOK-OFF .....28
  - PLAY WITH YOUR FOOD CONTEST.....30
  - BIG TEX® BOX LUNCH CONTEST .....32
  - SOUP OR SALAD CONTEST .....34
  - ICE CREAM FREEZE-OFF .....36
  - THE ULTIMATE GRILLED CHEESE CHALLENGE .....38
  - CHARCUTERIE BOARD CHALLENGE .....40
  - YOUTH COOKING CONTEST.....42
  - INTERNATIONAL CUISINE CONTEST.....45
  - SPEEDY DISHES CONTEST .....47
  - FAIR CONCOCTIONS CONTEST .....49
  - CHICKEN OR THE EGG CONTEST.....51
  - COBBLER COOK-OFF.....53
  - TEX MEX CONTEST .....55
  - CANDY CONTEST .....57
- REGISTRATION FORM.....59**



# I WANT TO ENTER MY FAVORITE DISH WHERE DO I BEGIN?

## ➔ HOWDY HOME COOKS!

We invite you to be a part of a State Fair of Texas tradition – the Cooking Contests. Whether you like to bake or prefer something a bit more savory, we have cooking contests throughout the 24 days of the Fair for home cooks of every skill level and age! We have created a guide to help you navigate the process.

*Kathy Bennett*  
DIRECTOR, CREATIVE ARTS



## ENTERING A COOKING CONTEST IS AS EASY AS...

- 1 CHOOSE A CONTEST**  
The Fair has 25 different contests ranging from pies to Tex-Mex.
- 2 PICK A CATEGORY**  
Each contest has a variety of categories that showcase the overall theme of the contests.
- 3 REGISTER ONLINE**  
Simply go to [www.BigTex.com/Creative](http://www.BigTex.com/Creative) and find the registration button to register your favorite recipe.
- 4 BRING YOUR ENTRIES TO THE FAIR**  
Entries must be brought to the Creative Arts building on the designated contest days. **Registration opens at 9:00 a.m. and judging begins promptly at 10:30 a.m. unless otherwise noted.**



**[WWW.BIGTEX.COM/CREATIVE](http://WWW.BIGTEX.COM/CREATIVE)**

EMAIL [CREATIVEARTS@BIGTEX.COM](mailto:CREATIVEARTS@BIGTEX.COM) WITH ANY QUESTIONS



# WHO CAN ENTER A CONTEST?



➔ **FAIR FANS OF ALL AGES** and all skill levels can enter the Cooking Contests.

Cooking Contests are open to home cooks of all ages, unless otherwise noted. The Fair does offer a Youth Cooking Contest just for younger cooks. The State Fair of Texas encourages all Fair fans to enter.

## **ADULT AMATEUR (18+ YEARS OF AGE)**

Anyone age 18 and over, who engages in cooking as a hobby. NOTE: Seniors compete in all Adult Amateur Divisions.

## **YOUTH (JUNIOR – 13 TO 17 / CHILD – 12 & YOUNGER)**

The Fair has designated special categories for those ages 17 and under in our Youth Cooking Contest. Young cooks may also enter **any** of the cooking contests, unless otherwise noted.

**Professionals in the culinary field are not eligible for participation in the State Fair of Texas Cooking Contests.** The Fair defines Culinary Professional as an individual who is a chef or cooks professional as a source of income, an individual who has edited, produced, printed, and/or published a cookbook for professional gain, or an individual who owns a food company that distributed pre-packaged food items on a personal website, global marketing platform, social media site, or in a physical store.



STATE FAIR  
OF  
TEXAS



# COOKING CONTESTS

EMAIL [CREATIVEARTS@BIGTEX.COM](mailto:CREATIVEARTS@BIGTEX.COM) WITH ANY QUESTIONS. | VISIT [BIGTEX.COM/CREATIVE](http://BIGTEX.COM/CREATIVE) FOR MORE

## COOKING CONTEST SCHEDULE 2024

|       |          |  |
|-------|----------|--|
| FRI.  | APR. 26  | CAKE CONTEST <i>Battle</i>   |
| SAT.  | APR. 27  | COOKIE CONTEST <i>Battle</i>   |
| SUN.  | APR. 28  | PIE CONTEST <i>Battle</i>  |
| SAT.  | SEPT. 28 | BREAD CONTEST  |
| SUN.  | SEPT. 29 | COOKING WITH CHEESE CONTEST  |
| MON.  | SEPT. 30 | HONEY, THE MAGIC INGREDIENT<br>BEEKEEPERS HONEY CONTEST<br>FARM TO FORK CONTEST            |
| TUES. | OCT. 1   | 4-H NATIONAL FOOD CHALLENGE  |
| WED.  | OCT. 2   | CHOCOLATE CONTEST  |
| FRI.  | OCT. 4   | PIZZA COOK-OFF   |
| SUN.  | OCT. 6   | BEST OF SHOW-DOWN <i>Invitation Only</i><br>PLAY WITH YOUR FOOD CONTEST <i>New!</i>        |
| MON.  | OCT. 7   | BIG TEX® BOX LUNCH CONTEST <i>New!</i><br>SOUP OR SALAD CONTEST <i>New!</i>                |
| WED.  | OCT. 9   | ICE CREAM FREEZE-OFF   |
| THUR. | OCT. 10  | THE ULTIMATE GRILLED CHEESE CHALLENGE <i>New!</i><br>CHARCUTERIE BOARD CONTEST <i>New!</i> |
| SAT.  | OCT. 12  | <b>YOUTH</b> COOKING CONTEST   |
| SUN.  | OCT. 13  | INTERNATIONAL CUISINE CONTEST  |
| TUES. | OCT. 15  | SPEEDY DISHES CONTEST<br>FAIR CONCOCTIONS CONTEST  |
| WED.  | OCT. 16  | CHICKEN OR THE EGG CONTEST <i>New!</i>   |
| THUR. | OCT. 17  | COBBLER COOK-OFF   |
| SAT.  | OCT. 19  | TEX MEX CONTEST  |
| SUN.  | OCT. 20  | CANDY CONTEST  |

## KEY DATES

**MARCH** ➔ ALL HANDBOOKS RELEASED  
- COOKING & ARTS AND CRAFTS  
**20TH** ➔ ONLINE REGISTRATION OPEN  
FOR BATTLE FOR THE BLUE  
RIBBONS COOKING CONTESTS  
★ ★ ★ ★ ★

◆ ◆ ◆ **MAY** ➔ ONLINE REGISTRATION OPEN  
FOR ALL COOKING AND  
**8TH** ➔ ART & CRAFTS CONTESTS

## ★ BATTLE FOR THE ★ BLUE RIBBONS



The State Fair of Texas welcomes back The Battle for the Blue Ribbons and will host three of the Fair's most popular Creative Arts Cooking Contests – Cakes, Cookies, and Pies – over a weekend in late April. All blue-ribbon winners from the three contests will be invited to "Best of Show-Down" in the Competition Kitchen during the Fair on Sunday, 10/6/2024.

**FRI., APR. 26 – CAKE CONTEST**  
**SAT., APR. 27 – COOKIE CONTEST**  
**SUN., APR. 28 – PIE CONTEST**

PRE-REGISTRATION IS  
REQUIRED FOR ALL STATE FAIR  
OF TEXAS COOKING CONTESTS.  
VISIT [BIGTEX.COM/CREATIVE](http://BIGTEX.COM/CREATIVE)

# *New!* BATTLE FOR THE BLUE RIBBONS



Howdy Folks! The staff of the State Fair of Texas is very excited to continue this program.

We understand that entering a Cooking Contest during the Fair takes a great deal of commitment both of your time and financially. Offering a portion of our Cooking Contests during Spring helps us remove some of the challenges for you.

We hope that you will join us for one or all of the contests this April and hopefully win one of the coveted blue ribbons.

*Kathy Bennett*

KATHY BENNETT | DIRECTOR OF CREATIVE ARTS

★ ★ ★ ★ CONTESTS ★ ★ ★ ★  
**CAKE** | **COOKIE** | **PIE**  
**APR 26** | **APR 27** | **APR 28**

**BEST OF SHOW-DOWN · SUNDAY, OCTOBER 6**

CONTESTANTS EARNING A BLUE RIBBON IN THE COOKIE, CAKE, AND PIE CONTEST ARE ELIGIBLE TO COMPETE IN THE BEST OF SHOW-DOWN.

## WHO CAN ENTER?

CONTESTS ARE OPEN TO CONTESTANTS AMATEUR HOME COOKS OF ALL AGES.  
CONTESTANTS MUST COMPLETE ONLINE PRE-REGISTRATION FOR THIS CONTEST.  
REGISTER ONLINE AT [HTTP://WWW.CREATIVE.BIGTEX.COM](http://www.creative.bigtex.com)

**HAVE QUESTIONS? EMAIL [CREATIVEARTS@BIGTEX.COM](mailto:creativearts@bigtex.com) WITH ANY QUESTIONS.**

# 2024 COOKING CONTESTS

## DURING the FAIR

### RULES & PARTICIPATION GUIDELINES

**Cooking Contests are open to amateurs only.** No professional cooks or culinary teachers may enter. Please see Definition of Terms section for amateur qualifications.

- The Best of Show winner from 2023 is not eligible to enter the same contest in 2024.

**Contestants cannot enter the same recipe twice in any 2024 contest.**

- Mixes or prepared foods may not be used in recipes, unless otherwise specified.
- Read individual contest rules for contest-specific requirements and changes from last year.
- No covers are allowed on containers (i.e., lids, plastic wrap, etc.). The Fair is not responsible for contestants' containers.
- Decisions of the Director of Creative Arts will be final. No person is allowed to interfere with judges or Fair staff assisting judges during the judging process. Violators may be disqualified and asked to leave the judging area.

#### BEST COMPETITOR AWARD

- **1ST PLACE – \$1,000**
- **2ND PLACE – \$750**
- **3RD PLACE – \$500**

**AWARDED TO THE TOP THREE DURING-FAIR CONTESTANTS WHO ACCUMULATE THE MOST PARTICIPATION POINTS FROM DURING-FAIR CONTESTS.**

Points are calculated as follows:

- *Best of Show Ribbon* = 4 points each
- *1st Place Ribbon* = 3 points each
- *2nd Place Ribbon* = 2 points each
- *3rd Place Ribbon* = 1 point each

The Best Competitor award ceremony will be held following the final contest on Sunday, October 20, 2024, in the Creative Arts building, Competition Kitchen.

The 2023 1st Place-Best Competitor is not eligible to compete for this award in 2024.

#### THREE CONTEST PROGRAM

Entering Cooking Contests at the State Fair of Texas could earn you a Season Pass for the Fair.

It is simple: register and bring your entry to THREE different Cooking Contests during this year's State Fair. Prior to next year's Fair, you will be notified via email that you have qualified to receive a Season Pass by mail. Contestants must enter three individual contests. (i.e., Bread, Pies, Tex-Mex, etc.).

NOTE: Entering three categories in any contest does NOT qualify toward the three contests. All three contests must take place within the same calendar/Fair year. Entries in the Battle for the Blue Ribbons count toward the Three Contest Program.

# CAKE CONTEST

FRIDAY, APRIL 26, 2024  
CHECK-IN 9:00 - 10:30 A.M. • JUDGING 10:30 A.M.

SPECIAL BEST OF SHOW  
PRIZE AWARDED BY:

COLLIN STREET BAKERY

## CONTEST DESCRIPTION

Contestants will bring their best homemade cake to be presented to a panel of judges for evaluation.

## ENTRY REQUIREMENTS:

Contestant may enter up to **6 categories** in this contest. **One entry per category.**

AMATEURS ONLY

\$2 PER ENTRY

ALL AGES WELCOME

## RIBBONS & PRIZES:

Best of Show awarded once. Other ribbons awarded in each category.  
Best of Show will be awarded at the Best of Show-Down on 10/6/2024

PURPLE  
BLUE  
RED  
WHITE  
YELLOW

BEST OF SHOW  
1ST PLACE  
2ND PLACE  
3RD PLACE  
HONORABLE MENTION

\$200  
\$25  
\$15  
\$10  
RIBBON

## CONTEST RULES



**Cooking Contests are open to amateurs only.** No professional cooks or culinary teachers may enter. **Contestants cannot enter the same recipe twice in any 2024 contest.**

- Contestants may enter up to six categories. One entry per category.
- No mixes or sauces allowed.
- Cakes cannot be cut before serving.
- Limited refrigeration available.
- Entries under “Layered Cake” must have more than one layer.
- No chocolate allowed (exception: German Chocolate Cake.)

## JUDGING CRITERIA

Entries will be judged on taste, appearance, moistness, and texture.



# CAKE CONTEST

FRIDAY, APRIL 26, 2024

CHECK-IN 9:00 - 10:30 A.M. • JUDGING 10:30 A.M.

SPECIAL BEST OF SHOW  
PRIZE AWARDED BY:

COLLIN STREET BAKERY

## ENTRY PROCESS



- Online pre-registration for this contest is **REQUIRED**.
- Contestants must register and turn in completed entries by 10:30 a.m. on contest day as specified.
- No preparation of entry will be allowed after 10:30 a.m. unless approved by the Director of Creative Arts.



## REGISTER TODAY!

SCAN THE QR CODE OR VISIT [CREATIVE.BIGTEX.COM](https://creative.bigtex.com)

## RECIPE SUBMISSION

- Contestants are required to include the recipe for each entry typed on an 8.5" x 11" sheet of white paper. In addition, the contestant's name, address, and phone number must be printed on the backside of the recipe.
- All recipes must list all ingredients with instructions on preparation in the order of ingredient usage. Incomplete recipes will not be used in the cookbook.
- Any recipe that has been precisely copied or photo-copied from any magazine, letter, newspaper, cookbook, or other publication will not be accepted.
- Must use U.S. standard measurements in the recipe. The use of metric system measurement is not acceptable.

## CATEGORIES



### LAYERED CAKE (2 LAYERS ONLY)

- BA10. CARROT
- BA11. GERMAN CHOCOLATE
- BA12. GLUTEN-FREE (ANY)
- BA13. SPICE
- BA14. WHITE (NO YOLKS)
- BA15. YELLOW

### LOAF, BUNDT, OR SHEET CAKE

- BA16. ANGEL FOOD
- BA17. CUPCAKES (12)
- BA18. FRUITCAKE
- BA19. GLUTEN-FREE (ANY)
- BA20. NUT
- BA21. POUND
- BA22. SPICE
- BA23. SWEET ROULADE (CAKE ROLL)
- BA24. UPSIDE DOWN CAKE

# COOKIE CONTEST

SATURDAY, APRIL 27, 2024

CHECK-IN 9:00 - 10:30 A.M. • JUDGING 10:30 A.M.

## CONTEST DESCRIPTION

Contestants will bring their best homemade cookies to be presented to a panel of judges for evaluation.

## ENTRY REQUIREMENTS:

Contestant may enter up to **6 categories** in this contest. **One entry per category.**

AMATEURS ONLY

\$2 PER ENTRY

ALL AGES WELCOME

## RIBBONS & PRIZES:

Best of Show awarded once. Other ribbons awarded in each category.

Best of Show will be awarded at the Best of Show-Down on 10/6/2024

PURPLE  
BLUE  
RED  
WHITE  
YELLOW

BEST OF SHOW  
1ST PLACE  
2ND PLACE  
3RD PLACE  
HONORABLE MENTION

\$200  
\$25  
\$15  
\$10  
RIBBON

## CONTEST RULES



Cooking Contests are open to amateurs only. No professional cooks or culinary teachers may enter. Contestants cannot enter the same recipe twice in any 2024 contest.

- Contestants may enter up to six categories. One entry per category.
- Entries must have at least 1½ dozen cookies in any container.
- No mixes allowed.
- No refrigeration.

## JUDGING CRITERIA

Entries will be judged on taste, appearance, and texture.

# COOKIE CONTEST

SATURDAY, APRIL 27, 2024

CHECK-IN 9:00 - 10:30 A.M. • JUDGING 10:30 A.M.

## ENTRY PROCESS



- Online pre-registration for this contest is **REQUIRED**.
- Contestants must register and turn in completed entries by 10:30 a.m. on contest day as specified.
- No preparation of entry will be allowed after 10:30 a.m. unless approved by the Director of Creative Arts.



## REGISTER TODAY!

SCAN THE QR CODE OR VISIT [CREATIVE.BIGTEX.COM](https://creative.bigtex.com)

## RECIPE SUBMISSION

- Contestants are required to include the recipe for each entry typed on an 8.5" x 11" sheet of white paper. In addition, the contestant's name, address, and phone number must be printed on the backside of the recipe.
- All recipes must list all ingredients with instructions on preparation in the order of ingredient usage. Incomplete recipes will not be used in the cookbook.
- Any recipe that has been precisely copied or photo-copied from any magazine, letter, newspaper, cookbook, or other publication will not be accepted.
- Must use U.S. standard measurements in the recipe. The use of metric system measurement is not acceptable.

## CATEGORIES



- BB20. CHOCOLATE
- BB21. CHOCOLATE CHIP
- BB22. DECORATED
- BB23. FRUIT
- BB24. GLUTEN-FREE
- BB25. HOLIDAY (ANY)
- BB26. LEMON
- BB27. MACARON
- BB28. MACAROON
- BB29. OATMEAL
- BB30. PEANUT BUTTER
- BB31. SHORTBREAD
- BB32. SNICKERDOODLE
- BB33. SPICE
- BB34. SUGAR

# PIE CONTEST

SUNDAY, APRIL 28, 2024

CHECK-IN 9:00 - 10:30 A.M. • JUDGING 10:30 A.M.

## CONTEST DESCRIPTION

Contestants will bring their best homemade pie to be presented to a panel of judges for evaluation.

## ENTRY REQUIREMENTS:

Contestant may enter up to **6 categories** in this contest. **One entry per category.**

AMATEURS ONLY

\$2 PER ENTRY

ALL AGES WELCOME

## RIBBONS & PRIZES:

Best of Show awarded once. Other ribbons awarded in each category.

Best of Show will be awarded at the Best of Show-Down on 10/6/2024

PURPLE  
BLUE  
RED  
WHITE  
YELLOW

BEST OF SHOW  
1ST PLACE  
2ND PLACE  
3RD PLACE  
HONORABLE MENTION

\$200  
\$25  
\$15  
\$10  
RIBBON

## CONTEST RULES



Cooking Contests are open to amateurs only. No professional cooks or culinary teachers may enter. Contestants cannot enter the same recipe twice in any 2024 contest.

- Contestants may enter up to 6 categories. One entry per category.
- The exhibitor **must make pie crusts** and include the recipe.
- No mixes or sauces allowed.
- Use traditional pie plates only – no tart or springform pans.

## JUDGING CRITERIA

Entries will be judged on taste, consistency, crust, and appearance.

# PIE CONTEST

SUNDAY, APRIL 28, 2024

CHECK-IN 9:00 - 10:30 A.M. • JUDGING 10:30 A.M.

## ENTRY PROCESS



- Online pre-registration for this contest is **REQUIRED**.
- Contestants must register and turn in completed entries by 10:30 a.m. on contest day as specified.
- No preparation of entry will be allowed after 10:30 a.m. unless approved by the Director of Creative Arts.



## REGISTER TODAY!

SCAN THE QR CODE OR VISIT [CREATIVE.BIGTEX.COM](https://creative.bigtex.com)

## RECIPE SUBMISSION

- Contestants are required to include the recipe for each entry typed on an 8.5" x 11" sheet of white paper. In addition, the contestant's name, address, and phone number must be printed on the backside of the recipe.
- All recipes must list all ingredients with instructions on preparation in the order of ingredient usage. Incomplete recipes will not be used in the cookbook.
- Any recipe that has been precisely copied or photo-copied from any magazine, letter, newspaper, cookbook, or other publication will not be accepted.
- Must use U.S. standard measurements in the recipe. The use of metric system measurement is not acceptable.

## CATEGORIES



- BC30. BERRY PIE
- BC31. BUTTERMILK PIE
- BC32. CHESS PIE
- BC33. CHOCOLATE PIE
- BC34. CITRUS PIE
- BC35. CREAM PIE (NO CHOCOLATE, NO FRUIT)
- BC36. FRUIT PIE
- BC37. NUT PIE
- BC38. SAVORY (NO QUICHE)
- BC39. SUGAR-FREE PIE

# BREAD CONTEST

SATURDAY, SEPTEMBER 28, 2024  
CHECK-IN 9:00 - 10:30 A.M. • JUDGING 10:30 A.M.

SPECIAL BEST OF SHOW  
PRIZE AWARDED BY:



## CONTEST DESCRIPTION

Contestants will bring their best homemade bread to be presented to a panel of judges for evaluation.

## ENTRY REQUIREMENTS:

Contestant may enter up to **6 categories** in this contest. **One entry per category.**

**AMATEURS ONLY**

**\$2 PER ENTRY**

**ALL AGES WELCOME**

## RIBBONS & PRIZES:

Best of Show awarded once. Other ribbons awarded in each category.

PURPLE  
BLUE  
RED  
WHITE  
YELLOW

BEST OF SHOW  
1ST PLACE  
2ND PLACE  
3RD PLACE  
HONORABLE MENTION

\$200  
\$15  
\$10  
\$5  
RIBBON

## CONTEST RULES



**Cooking Contests are open to amateurs only.** No professional cooks or culinary teachers may enter. **Contestants cannot enter the same recipe twice in any 2024 contest.**

- Contestants may enter up to six categories. One entry per category.
- Dough may be prepared traditionally or in a bread machine.
- No mixes, sauces, or heating allowed.
- Jams, Jellies, and Preserves allowed in Fruit Bread
- No refrigeration.

## JUDGING CRITERIA

Entries will be judged on taste, symmetry of shape, uniform browning, and texture.

# BREAD CONTEST

SATURDAY, SEPTEMBER 28, 2024  
CHECK-IN 9:00 - 10:30 A.M. • JUDGING 10:30 A.M.

SPECIAL BEST OF SHOW  
PRIZE AWARDED BY:



## ENTRY PROCESS



- Online pre-registration for this contest is **REQUIRED**.
- Contestants must register and turn in completed entries by 10:30 a.m. on contest day as specified.
- No preparation of entry will be allowed after 10:30 a.m. unless approved by the Director of Creative Arts.



## REGISTER TODAY!

SCAN THE QR CODE OR VISIT [CREATIVE.BIGTEX.COM](https://creative.bigtex.com)

## RECIPE SUBMISSION

- Contestants are required to include the recipe for each entry typed on an 8.5" x 11" sheet of white paper. In addition, the contestant's name, address, and phone number must be printed on the backside of the recipe.
- All recipes must list all ingredients with instructions on preparation in the order of ingredient usage. Incomplete recipes will not be used in the cookbook.
- Any recipe that has been precisely copied or photo-copied from any magazine, letter, newspaper, cookbook, or other publication will not be accepted.
- Must use U.S. standard measurements in the recipe. The use of metric system measurement is not acceptable.

## CATEGORIES



### YEAST BREAD

- CA10. BREAD (CHEESE, HERB, ONION, ETC.)
- CA11. GLUTEN-FREE BREAD (ANY)
- CA12. LOAF BREAD, WHITE (WHOLE LOAF)
- CA13. LOAF BREAD, OTHER (WHOLE LOAF)
- CA14. ROLLS, DINNER (12)
- CA15. SWEETBREAD, LOAF & COFFEE CAKES
- CA16. SWEETBREAD, SWEET ROLLS (CINNAMON, FRUIT, ETC.)
- CA17. SOURDOUGH

### QUICK BREAD

*No added sauces or whipped cream on quick breads.*

- CA18. BEER BREAD
- CA19. COFFEE CAKE
- CA20. CORNBREAD
- CA21. MUFFINS (12)
- CA22. FRUIT BREAD (APPLE, BANANA, ETC.)
- CA23. VEGETABLE BREAD (PUMPKIN, ZUCCHINI, ETC.)
- CA24. COMBO BREAD (FRUIT/VEGETABLE)

# COOKING WITH CHEESE CONTEST

SUNDAY, SEPTEMBER 29, 2024  
CHECK-IN 9:00 - 10:30 A.M. • JUDGING 10:30 A.M.

SPECIAL BEST OF SHOW PRIZE AWARDED BY:



## CONTEST DESCRIPTION

Contestants will bring their best homemade cheese dish to be presented to a panel of judges for evaluation.

## ENTRY REQUIREMENTS:

Contestant may enter up to 6 categories in this contest. One entry per category.

AMATEURS ONLY

\$2 PER ENTRY

ALL AGES WELCOME

## RIBBONS & PRIZES:

Best of Show awarded once. Other ribbons awarded in each category.

PURPLE  
BLUE  
RED  
WHITE  
YELLOW

BEST OF SHOW  
1ST PLACE  
2ND PLACE  
3RD PLACE  
HONORABLE MENTION

\$200  
\$15  
\$10  
\$5  
RIBBON

## CONTEST RULES



Cooking Contests are open to amateurs only. No professional cooks or culinary teachers may enter. Contestants cannot enter the same recipe twice in any 2024 contest.

- Contestants may enter up to six categories. One entry per category.
- **One** convenience item allowed. (i.e., soup, salsa, or canned vegetables).
- No mixes allowed.
- Limited refrigeration available.

## JUDGING CRITERIA

Entries will be judged on appearance, creativity and taste.



# COOKING WITH CHEESE CONTEST

SUNDAY, SEPTEMBER 29, 2024  
CHECK-IN 9:00 - 10:30 A.M. • JUDGING 10:30 A.M.

SPECIAL BEST OF SHOW  
PRIZE AWARDED BY:



## ENTRY PROCESS



- Online pre-registration for this contest is **REQUIRED**.
- Contestants must register and turn in completed entries by 10:30 a.m. on contest day as specified.
- No preparation of entry will be allowed after 10:30 a.m. unless approved by the Director of Creative Arts.



## REGISTER TODAY!

SCAN THE QR CODE OR VISIT [CREATIVE.BIGTEX.COM](http://CREATIVE.BIGTEX.COM)

## RECIPE SUBMISSION

- Contestants are required to include the recipe for each entry typed on an 8.5" x 11" sheet of white paper. In addition, the contestant's name, address, and phone number must be printed on the backside of the recipe.
- All recipes must list all ingredients with instructions on preparation in the order of ingredient usage. Incomplete recipes will not be used in the cookbook.
- Any recipe that has been precisely copied or photo-copied from any magazine, letter, newspaper, cookbook, or other publication will not be accepted.
- Must use U.S. standard measurements in the recipe. The use of metric system measurement is not acceptable.

## CATEGORIES



- CB10. CHEESE APPETIZER
- CB11. PIMENTO CHEESE
- CB12. MAC AND CHEESE
- CB13. VEGETABLE CHEESE SOUP
- CB14. CHEESE DESSERT (EXCEPT CHEESECAKE)
- CB15. CHEESECAKE

# HONEY, THE MAGIC INGREDIENT

MONDAY, SEPTEMBER 30, 2024  
CHECK-IN 9:00 - 10:30 A.M. • JUDGING 10:30 A.M.

SPECIAL PRIZES  
AWARDED BY:



## CONTEST DESCRIPTION

Contestants will bring their best dish made with Honey, the Magic Ingredient, to be presented to a panel of judges for evaluation.

## ENTRY REQUIREMENTS:

One entry per person.

AMATEURS ONLY

\$2 PER ENTRY

ALL AGES WELCOME

## RIBBONS & PRIZES:

Ribbons awarded in each category.

BLUE  
RED  
WHITE

1ST PLACE  
2ND PLACE  
3RD PLACE

\$200  
\$100  
\$50

## CONTEST RULES



**Cooking Contests are open to amateurs only.** No professional cooks or culinary teachers may enter. **Contestants cannot enter the same recipe twice in any 2024 contest.**

- Only one entry is allowed.
- No mixes allowed.
- The recipe must contain honey. You may use half honey and half sugar or other sweetener.
- This contest does not award Best of Show.

## JUDGING CRITERIA

Entries will be judged on taste, creativity, and presentation.

# HONEY, THE MAGIC INGREDIENT

MONDAY, SEPTEMBER 30, 2024  
CHECK-IN 9:00 - 10:30 A.M. • JUDGING 10:30 A.M.

SPECIAL PRIZES  
AWARDED BY:



## ENTRY PROCESS



- Online pre-registration for this contest is **REQUIRED**.
- Contestants must register and turn in completed entries by 10:30 a.m. on contest day as specified.
- No preparation of entry will be allowed after 10:30 a.m. unless approved by the Director of Creative Arts.



## REGISTER TODAY!

SCAN THE QR CODE OR VISIT [CREATIVE.BIGTEX.COM](https://creative.bigtex.com)

## RECIPE SUBMISSION

- Contestants are required to include the recipe for each entry typed on an 8.5" x 11" sheet of white paper. In addition, the contestant's name, address, and phone number must be printed on the backside of the recipe.
- All recipes must list all ingredients with instructions on preparation in the order of ingredient usage. Incomplete recipes will not be used in the cookbook.
- Any recipe that has been precisely copied or photo-copied from any magazine, letter, newspaper, cookbook, or other publication will not be accepted.
- Must use U.S. standard measurements in the recipe. The use of metric system measurement is not acceptable.

## CATEGORIES



**CC10.** ANY DISH USING HONEY – THE MAGIC INGREDIENT

# BEEKEEPERS HONEY CONTEST

MONDAY, SEPTEMBER 30, 2024  
CHECK-IN 9:00 - 10:30 A.M. • JUDGING 10:30 A.M.

SPECIAL PRIZES  
AWARDED BY:



## CONTEST DESCRIPTION

Contestants will bring their honey entries to be presented to a panel of judges for evaluation.

## ENTRY REQUIREMENTS:

Contestant may enter **all categories in this contest, but only one entry per category.**

**ALL AGES WELCOME**

## RIBBONS & PRIZES:

Ribbons awarded in each category. Based on blind tastings. No Best of Show will be awarded.

BLUE  
RED  
WHITE

1ST PLACE  
2ND PLACE  
3RD PLACE

RIBBON  
RIBBON  
RIBBON

## CONTEST RULES



- The morning of the contest, one entry form must be submitted with each honey container at the registration table. There is no fee for entering and entry forms will be on hand. NOTE: Online entry is not available.
- ALL honey must be produced by Texas honey bees owned or managed by the contestant.
- Each contestant must sign an affidavit stating that each entry he or she submits was produced by him/her in conformity with the rules set forth herein.
- The Honey Contests are open to anyone who wishes to enter one or more category, except as otherwise specifically proved for herein. The honey contest is also open to individuals serving as judges, stewards, or show secretaries. However, no individual serving as judge, steward or helper may participate in judging or be in the same area during judging of the category in which they, or immediate family members have entered.
- Contestants may enter all categories, but only one entry per category. More than one individual from a family or household may submit entries across different categories. However, immediate family members and individuals from common households may not submit multiple entries in the same category.
- “Immediate Family Member” is defined as individuals who are spouses, siblings, parents, children, grandparents, grandchildren, aunts, uncles, nieces, nephews, first cousins, parents of common children, stepparents, stepchildren, or any individuals residing in the same residence.

# BEEKEEPERS HONEY CONTEST

MONDAY, SEPTEMBER 30, 2024  
CHECK-IN 9:00 - 10:30 A.M. • JUDGING 10:30 A.M.

SPECIAL PRIZES  
AWARDED BY:



## CONTEST RULES



- Contest administrators will affix coded tabs to entries upon submission.
- Once entries have been accepted into the competition by the administrators, they may not be altered in any way.
- There should be no identifying label or marks whatsoever on the exterior of the honey container(s), nor seals under the lid(s). Note: Though an entry may be registered and received by the contest administrators, once in the judging area it will be disqualified IF it has a label or identifying markings on it.
- If multiple entries score the same, moisture content will be the determining factor for Polished Jar.
- Score sheets for participants in the TBA Honey Contests will be provided after the winning entries have been announced – with the exception of the Black Jar Honey Contest.
- Disposition of entries: Following the Honey Contest, all entries will be donated to Happy Hill Children's Farm along with the other honeys displayed in the Texas Beekeepers Association Honey Booth in the Food & Fiber Pavilion.

## JUDGING



### JUDGING CRITERIA

- Contest judges will evaluate and score entries on the day of the contest.
- Contest Committee Chairman will announce awards at the end of judging in the Creative Arts / State Fair Competition area.
- **These contests do not award Best of Show.**

### BLACK JAR HONEY JUDGING CRITERIA

- Judges will award 1st, 2nd, and 3rd place ribbons to entries based on blind tastings.
- Judges will not see the color, clarity, or any visual appeal of the honey.
- Judges evaluate entries based on flavor profile and taste alone.
- A panel of judges will taste, test and rank all the honey entries until the top three honey entries are determined.
- An "entry" consists of not less than two ounces, nor more than four ounces, of pure, unadulterated honey.
- Submit entry sample in a container without any identifying marks.

### POLISHED JAR HONEY JUDGING CRITERIA

- Judges will award 1st, 2nd, and 3rd place ribbons to entries based on total points received.
- Judges may award points to entries in the following categories for a possible 100 points.
- Extracted honey is judged in three categories (a) light, (b) medium or amber, and (c) dark.
- **Contestants may only submit one entry in each of these three categories.**

# BEEKEEPERS HONEY CONTEST

MONDAY, SEPTEMBER 30, 2024  
CHECK-IN 9:00 - 10:30 A.M. • JUDGING 10:30 A.M.

SPECIAL PRIZES  
AWARDED BY:



## JUDGING



### POLISHED JAR HONEY JUDGING CRITERIA CONT.

- Contestants may only submit honey entries produced in their own Texas apiary or by bees that they manage for honey production or pollination in Texas.
  - Submit Polished Jar Honey entries in one-pound, glass (no plastic), “Queen-line” or “Classic” style jars (see example below): entries submitted in any other style of jar or container will not be accepted by the contest administrators.
  - Closures may be of metal or plastic.
  - Tamper-proof seals are strictly prohibited; any entries submitted with a tamper-proof seal will be penalized.
- Judges evaluate entries on the following criteria: cleanliness of the jar and lid; correct fill level (see example below); cleanliness and clarity of the honey; aroma and flavor (for ‘off’ aromas or flavors), and moisture content (only if needed).

### CREAMED JAR HONEY JUDGING CRITERIA

- Judges will award 1st, 2nd and 3rd place ribbons to entries based on total points received.
- Judges may award points to entries in the following categories for a possible 100 points.
- An entry of creamed honey is natural, unflavored, smoothly granulated, and spreadable.
- A creamed honey entry is submitted in a clear, wide-mouth, straight-sided glass jar with appropriate metal or plastic lid containing no less than eight ounces (8 oz.), nor more than sixteen ounces (16 oz) in net weight.
- Judges evaluate entries on the following confirmation with the criteria set forth herein: **Cleanliness of jar and lid; correct fill level; cleanliness and purity of honey; uniformity of product within the jar; fineness of crystals; appropriate set or firmness (should be spreadable but not runny); freedom from foam, frosting or visible moisture; freedom from added flavors, striation, or colors; uniformity of jars that comprise the entry; aroma and flavor (for ‘off’ aromas or flavors)’ and moisture content (only if in question).**

## CATEGORIES



- CD10. POLISHED JAR HONEY – LIGHT
- CD11. POLISHED JAR HONEY – MEDIUM OR AMBER
- CD12. POLISHED JAR HONEY – DARK
- CD13. BLACK JAR HONEY
- CD14. CREAMED HONEY

# BEEKEEPERS HONEY CONTEST

MONDAY, SEPTEMBER 30, 2024  
CHECK-IN 9:00 - 10:30 A.M. • JUDGING 10:30 A.M.

SPECIAL PRIZES  
AWARDED BY:



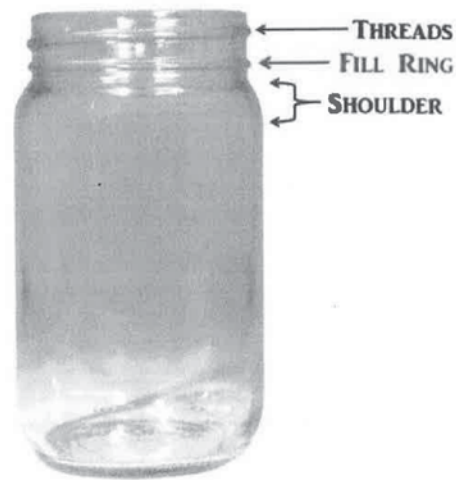
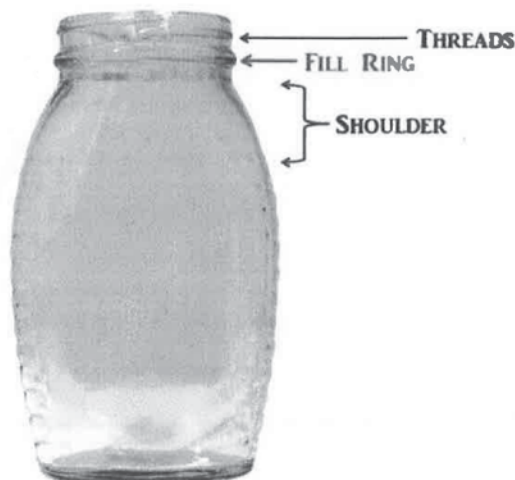
## DIAGRAMS



The correct jar types for the Polished Jar Contest:

### CLASSIC

### QUEENLINE



# FARM TO FORK CONTEST

MONDAY, SEPTEMBER 30, 2024  
CHECK-IN 9:00 - 10:30 A.M. • JUDGING 10:30 A.M.

SPECIAL BEST OF SHOW  
PRIZE AWARDED BY:



## CONTEST DESCRIPTION

Contestants will bring their best homemade dish to be presented to a panel of judges for evaluation.

## ENTRY REQUIREMENTS:

Contestant may enter up to 6 categories in this contest. One entry per category.

AMATEURS ONLY

\$2 PER ENTRY

ALL AGES WELCOME

## RIBBONS & PRIZES:

Best of Show awarded once. Other ribbons awarded in each category.

PURPLE  
BLUE  
RED  
WHITE  
YELLOW

BEST OF SHOW  
1ST PLACE  
2ND PLACE  
3RD PLACE  
HONORABLE MENTION

\$200  
\$15  
\$10  
\$5  
RIBBON

## CONTEST RULES



Cooking Contests are open to amateurs only. No professional cooks or culinary teachers may enter. Contestants cannot enter the same recipe twice in any 2024 contest.

- Contestants may enter up to six categories. One entry per category.
- Contestants must make a sweet or savory dish using fresh produce.
- **No commercially canned vegetables allowed. Fresh or frozen vegetables ARE allowed.**
- No mixes allowed.
- Limited refrigeration available.

## JUDGING CRITERIA

Entries will be judged on taste and appearance.



# FARM TO FORK CONTEST

MONDAY, SEPTEMBER 30, 2024  
CHECK-IN 9:00 - 10:30 A.M. • JUDGING 10:30 A.M.

SPECIAL BEST OF SHOW  
PRIZE AWARDED BY:



## ENTRY PROCESS



- Online pre-registration for this contest is **REQUIRED**.
- Contestants must register and turn in completed entries by 10:30 a.m. on contest day as specified.
- No preparation of entry will be allowed after 10:30 a.m. unless approved by the Director of Creative Arts.



# REGISTER TODAY!

SCAN THE QR CODE OR VISIT [CREATIVE.BIGTEX.COM](http://CREATIVE.BIGTEX.COM)

## RECIPE SUBMISSION

- Contestants are required to include the recipe for each entry typed on an 8.5" x 11" sheet of white paper. In addition, the contestant's name, address, and phone number must be printed on the backside of the recipe.
- All recipes must list all ingredients with instructions on preparation in the order of ingredient usage. Incomplete recipes will not be used in the cookbook.
- Any recipe that has been precisely copied or photo-copied from any magazine, letter, newspaper, cookbook, or other publication will not be accepted.
- Must use U.S. standard measurements in the recipe. The use of metric system measurement is not acceptable.

## CATEGORIES



### VEGETABLES

- CE10. BRUSSEL SPROUTS
- CE11. CARROTS
- CE12. CAULIFLOWER
- CE13. CORN
- CE14. EGGPLANT
- CE15. POTATOES
- CE16. RAILROAD PIE
- CE17. SQUASH
- CE18. TOMATOES

### SWEETS

- CE19. FRIED PIES
- CE20. FRUIT DESSERTS, ANY
- CE21. NUT DESSERTS, ANY

# CHOCOLATE CONTEST

WEDNESDAY, OCTOBER 2, 2024  
CHECK-IN 9:00 - 10:30 A.M. • JUDGING 10:30 A.M.

SPECIAL BEST OF SHOW PRIZE AWARDED BY:



## CONTEST DESCRIPTION

Contestants will bring their best homemade chocolate dish to be presented to a panel of judges for evaluation.

## ENTRY REQUIREMENTS:

Contestant may enter up to 6 categories in this contest. One entry per category.

AMATEURS ONLY

\$2 PER ENTRY

ALL AGES WELCOME

## RIBBONS & PRIZES:

Best of Show awarded once. Other ribbons awarded in each category.

PURPLE  
BLUE  
RED  
WHITE  
YELLOW

BEST OF SHOW  
1ST PLACE  
2ND PLACE  
3RD PLACE  
HONORABLE MENTION

\$200  
\$15  
\$10  
\$5  
RIBBON

## CONTEST RULES



Cooking Contests are open to amateurs only. No professional cooks or culinary teachers may enter. Contestants cannot enter the same recipe twice in any 2024 contest.

- Contestants may enter up to six categories. One entry per category.
- Entries must include at least 12 servings of the category chosen (brownies, bars, tarts, etc.).
- No mixes allowed.
- Limited refrigeration available.

## JUDGING CRITERIA

Entries will be judged on taste, texture, and appearance.

# CHOCOLATE CONTEST

WEDNESDAY, OCTOBER 2, 2024  
CHECK-IN 9:00 - 10:30 A.M. • JUDGING 10:30 A.M.

SPECIAL BEST OF SHOW  
PRIZE AWARDED BY:



## ENTRY PROCESS



- Online pre-registration for this contest is **REQUIRED**.
- Contestants must register and turn in completed entries by 10:30 a.m. on contest day as specified.
- No preparation of entry will be allowed after 10:30 a.m. unless approved by the Director of Creative Arts.



## REGISTER TODAY!

SCAN THE QR CODE OR VISIT [CREATIVE.BIGTEX.COM](http://CREATIVE.BIGTEX.COM)

## RECIPE SUBMISSION

- Contestants are required to include the recipe for each entry typed on an 8.5" x 11" sheet of white paper. In addition, the contestant's name, address, and phone number must be printed on the backside of the recipe.
- All recipes must list all ingredients with instructions on preparation in the order of ingredient usage. Incomplete recipes will not be used in the cookbook.
- Any recipe that has been precisely copied or photo-copied from any magazine, letter, newspaper, cookbook, or other publication will not be accepted.
- Must use U.S. standard measurements in the recipe. The use of metric system measurement is not acceptable.

## CATEGORIES



- CF10. BROWNIE
- CF11. CHOCOLATE BARS
- CF12. CHOCOLATE LAYER CAKE (TWO OR MORE LAYERS)
- CF13. CHOCOLATE MOUSSE OR PUDDING
- CF14. CHOCOLATE SHEET CAKE
- CF15. CHOCOLATE TART
- CF16. FLOURLESS CHOCOLATE CAKE
- CF17. SPECTACULAR CHOCOLATE DESSERT

# PIZZA COOK-OFF

FRIDAY, OCTOBER 4, 2024  
CHECK-IN 9:00 • JUDGING 12:00 P.M.

SPECIAL BEST OF SHOW  
PRIZE AWARDED BY:



## CONTEST DESCRIPTION

This is an on-site Pizza Cook-Off where all cooking will occur during the Fair in front of a live audience and will be presented to judges for evaluation.

## ENTRY REQUIREMENTS:

Contestant may enter up to **3 categories** in this contest. **One entry per category.**

**AMATEURS ONLY**

**\$3 PER ENTRY**

**ALL AGES WELCOME**

## RIBBONS & PRIZES:

Best of Show awarded once. Other ribbons awarded in each category.

PURPLE  
BLUE  
RED  
WHITE  
YELLOW

BEST OF SHOW  
1ST PLACE  
2ND PLACE  
3RD PLACE  
HONORABLE MENTION

\$200  
\$15  
\$10  
\$5  
RIBBON

## CONTEST RULES



**Cooking Contests are open to amateurs only.** No professional cooks or culinary teachers may enter. **Contestants cannot enter the same recipe twice in any 2024 contest.**

- Contestants may enter up to three categories. One entry per category.
- Contestants must bring all ingredients and utensils needed to make the pizza.
- Commercially prepared or self-made dough may be used. The dough must be ready when the contestant checks in.
- No mixes or commercially prepared sauces allowed.
- Oven assignments will be drawn at check-in.

## JUDGING CRITERIA

Entries will be judged on taste, texture, and ease of preparation.

# PIZZA COOK-OFF

FRIDAY, OCTOBER 4, 2024  
CHECK-IN 9:00 • JUDGING 12:00 P.M.

SPECIAL BEST OF SHOW  
PRIZE AWARDED BY:



## ENTRY PROCESS



- Pre-registration is required to be entered in the lotto drawing that will choose the 16 contestants by chance.
- All interested cooks must submit their registration no later than Monday, July 8, 2024. Each Cook-Off participant will be selected on Friday, July 12, 2024. Entry fees will be the responsibility of contestants if their names are drawn in the lottery, and Creative Arts will notify them regarding payment options.



SCAN THE QR CODE TO

**REGISTER TODAY!**

[BIGTEX.COM/COOKOFF](http://BIGTEX.COM/COOKOFF)

## RECIPE SUBMISSION

- Contestants are required to include the recipe for each entry typed on an 8.5" x 11" sheet of white paper. In addition, the contestant's name, address, and phone number must be printed on the backside of the recipe.
- All recipes must list all ingredients with instructions on preparation in the order of ingredient usage. Incomplete recipes will not be used in the cookbook.
- Any recipe that has been precisely copied or photo-copied from any magazine, letter, newspaper, cookbook, or other publication will not be accepted.
- Must use U.S. standard measurements in the recipe. The use of metric system measurement is not acceptable.

## CATEGORIES



- CG10. COMBINATION
- CG11. DEEP-DISH
- CG12. DESSERT
- CG13. MEAT
- CG14. VEGETABLES

# PLAY WITH YOUR FOOD CONTEST

SUNDAY, OCTOBER 6, 2024  
CHECK-IN 9:00 - 10:30 A.M. • JUDGING 10:30 A.M.

SPECIAL BEST OF SHOW PRIZE AWARDED BY:



## CONTEST DESCRIPTION

Contestants will submit their handmade foodscape or food design to be presented to a panel of judges for evaluation.

## ENTRY REQUIREMENTS:

Contestant may enter up to 4 categories in this contest. One entry per category.

AMATEURS ONLY

\$2 PER ENTRY

ALL AGES WELCOME

## RIBBONS & PRIZES:

Best of Show awarded once. Other ribbons awarded in each category.

PURPLE  
BLUE  
RED  
WHITE  
YELLOW

BEST OF SHOW  
1ST PLACE  
2ND PLACE  
3RD PLACE  
HONORABLE MENTION

\$200  
\$15  
\$10  
\$5  
RIBBON

## CONTEST RULES



Cooking Contests are open to amateurs only. No professional cooks or culinary teachers may enter.

- Contestants may enter up to four categories. One entry per category.
- Must use primarily food items.
- May use some purchased or non-food accessories to enhance the design.

## JUDGING CRITERIA

Entries will not be tasted but judged on appearance and creativity.

# PLAY WITH YOUR FOOD CONTEST

SUNDAY, OCTOBER 6, 2024  
CHECK-IN 9:00 - 10:30 A.M. • JUDGING 10:30 A.M.

SPECIAL BEST OF SHOW PRIZE AWARDED BY:

The logo for Big Tex, featuring the words "Big Tex" in a stylized, cursive script font.

## ENTRY PROCESS

---



- Online pre-registration for this contest is **REQUIRED**.
- Contestants must register and turn in completed entries by 10:30 a.m. on contest day as specified.
- No preparation of entry will be allowed after 10:30 a.m. unless approved by the Director of Creative Arts.



## REGISTER TODAY!

SCAN THE QR CODE OR VISIT [CREATIVE.BIGTEX.COM](https://creative.bigtex.com)

## CATEGORIES

---



- CH10. ANIMAL OR MARINE LIFE
- CH11. CHARACTER
- CH12. FOODSCAPE
- CH13. FRUIT OR VEGGIE DRESS-UP

# BIG TEX LUNCH BOX CONTEST

MONDAY, OCTOBER 7, 2024  
CHECK-IN 9:00 - 10:30 A.M. • JUDGING 10:30 A.M.

SPECIAL 1ST PLACE PRIZE AWARDED BY:



## CONTEST DESCRIPTION

Contestants' entries must include a snack, a sandwich, and a dessert presented creatively in a box, container, or lunchbox to be presented to a panel of judges for evaluation.

## ENTRY REQUIREMENTS:

Contestants may submit **one entry only in this contest**. No best of show will be awarded

AMATEURS ONLY

\$2 PER ENTRY

ALL AGES WELCOME

## RIBBONS & PRIZES:

Ribbons awarded in each category.

BLUE  
RED  
WHITE  
YELLOW

1ST PLACE  
2ND PLACE  
3RD PLACE  
HONORABLE MENTION

\$15  
\$10  
\$5  
RIBBON

## CONTEST RULES



**Cooking Contests are open to amateurs only.** No professional cooks or culinary teachers may enter. **Contestants cannot enter the same recipe twice in any 2024 contest.**

- Only one entry is allowed.
- Must include all three items.
- One convenience item allowed.
- No drinks.

## JUDGING CRITERIA

Judging will be based on creativity, presentation, and taste.



# BIG TEX LUNCH BOX CONTEST

MONDAY, OCTOBER 7, 2024  
CHECK-IN 9:00 - 10:30 A.M. • JUDGING 10:30 A.M.

SPECIAL BEST OF SHOW  
PRIZE AWARDED BY:



## ENTRY PROCESS



- Online pre-registration for this contest is **REQUIRED**.
- Contestants must register and turn in completed entries by 10:30 a.m. on contest day as specified.
- No preparation of entry will be allowed after 10:30 a.m. unless approved by the Director of Creative Arts.



## REGISTER TODAY!

SCAN THE QR CODE OR VISIT [CREATIVE.BIGTEX.COM](https://creative.bigtex.com)

## RECIPE SUBMISSION

- Contestants are required to include the recipe for each entry typed on an 8.5" x 11" sheet of white paper. In addition, the contestant's name, address, and phone number must be printed on the backside of the recipe.
- All recipes must list all ingredients with instructions on preparation in the order of ingredient usage. Incomplete recipes will not be used in the cookbook.
- Any recipe that has been precisely copied or photo-copied from any magazine, letter, newspaper, cookbook, or other publication will not be accepted.
- Must use U.S. standard measurements in the recipe. The use of metric system measurement is not acceptable.

## CATEGORIES



CJ10. SNACK, SANDWICH, DESSERT

# SOUP OR SALAD CONTEST

MONDAY, OCTOBER 7, 2024  
CHECK-IN 9:00 - 10:30 A.M. • JUDGING 10:30 A.M.

SPECIAL BEST OF SHOW  
PRIZE AWARDED BY:



## CONTEST DESCRIPTION

Contestants will bring their best homemade dish to be presented to a panel of judges for evaluation.

## ENTRY REQUIREMENTS:

Contestant may enter up to **6 categories** in this contest. **One entry per category.**

AMATEURS ONLY

\$2 PER ENTRY

ALL AGES WELCOME

## RIBBONS & PRIZES:

Best of Show awarded once. Other ribbons awarded in each category.

PURPLE  
BLUE  
RED  
WHITE  
YELLOW

BEST OF SHOW  
1ST PLACE  
2ND PLACE  
3RD PLACE  
HONORABLE MENTION

\$200  
\$15  
\$10  
\$5  
RIBBON

## CONTEST RULES



**Cooking Contests are open to amateurs only.** No professional cooks or culinary teachers may enter. **Contestants cannot enter the same recipe twice in any 2024 contest.**

- Contestants may enter up to six categories. One entry per category.
- Entries can be heated before serving to judges.
- Limited refrigeration available.

## JUDGING CRITERIA

Judging will be based on appearance and taste.

# SOUP OR SALAD CONTEST

MONDAY, OCTOBER 7, 2024  
CHECK-IN 9:00 - 10:30 A.M. • JUDGING 10:30 A.M.

SPECIAL BEST OF SHOW  
PRIZE AWARDED BY:



## ENTRY PROCESS



- Online pre-registration for this contest is **REQUIRED**.
- Contestants must register and turn in completed entries by 10:30 a.m. on contest day as specified.
- No preparation of entry will be allowed after 10:30 a.m. unless approved by the Director of Creative Arts.



## REGISTER TODAY!

SCAN THE QR CODE OR VISIT [CREATIVE.BIGTEX.COM](http://CREATIVE.BIGTEX.COM)

## RECIPE SUBMISSION

- Contestants are required to include the recipe for each entry typed on an 8.5" x 11" sheet of white paper. In addition, the contestant's name, address, and phone number must be printed on the backside of the recipe.
- All recipes must list all ingredients with instructions on preparation in the order of ingredient usage. Incomplete recipes will not be used in the cookbook.
- Any recipe that has been precisely copied or photo-copied from any magazine, letter, newspaper, cookbook, or other publication will not be accepted.
- Must use U.S. standard measurements in the recipe. The use of metric system measurement is not acceptable.

## CATEGORIES



### SOUP

**CK10.** CHICKEN  
**CK11.** CHILI  
**CK12.** CREAM  
**CK13.** VEGGIE

### SALAD

**CK14.** CHICKEN  
**CK15.** FRUIT  
**CK16.** PASTA  
**CK17.** VEGGIE

# ICE CREAM FREEZE-OFF

WEDNESDAY, OCTOBER 9, 2024  
CHECK-IN 9:00 • JUDGING 12:00 P.M.

SPECIAL BEST OF SHOW  
PRIZE AWARDED BY:



## CONTEST DESCRIPTION

This is an on-site Ice Cream Freeze-Off where all cooking will occur during the Fair in front of a live audience and will be presented to judges for evaluation.

## ENTRY REQUIREMENTS:

Contestants may enter only **one (1) category in the contest.**

AMATEURS ONLY

\$3 PER ENTRY

ALL AGES WELCOME

## RIBBONS & PRIZES:

Best of Show awarded once. Other ribbons awarded in each category.

PURPLE  
BLUE  
RED  
WHITE  
YELLOW

BEST OF SHOW  
1ST PLACE  
2ND PLACE  
3RD PLACE  
HONORABLE MENTION

\$200  
\$15  
\$10  
\$5  
RIBBON

## CONTEST RULES



**Cooking Contests are open to amateurs only.** No professional cooks or culinary teachers may enter. **Contestants cannot enter the same recipe twice in any 2024 contest.**

- Contestants may enter one category.
- Contestants must bring all the necessary ingredients and equipment. A manual or an electric ice cream maker may be used. Prepare any custard base at home.
- No mixes allowed.
- Ice will be provided.
- Limited refrigeration available.

## JUDGING CRITERIA

Entries will be judged on taste and texture.

# ICE CREAM FREEZE-OFF

WEDNESDAY, OCTOBER 9, 2024  
CHECK-IN 9:00 • JUDGING 12:00 P.M.

SPECIAL BEST OF SHOW  
PRIZE AWARDED BY:



## ENTRY PROCESS



- Pre-registration is required to be entered in the lotto drawing that will choose the 18 contestants by chance.
- All interested cooks must submit their registration no later than Monday, July 8, 2024. Each Cook-Off participant will be selected on Friday, July 12, 2024. Entry fees will be the responsibility of contestants if their names are drawn in the lottery, and Creative Arts will notify them regarding payment options.



SCAN THE QR CODE TO

**REGISTER TODAY!**

[BIGTEX.COM/COOKOFF](http://BIGTEX.COM/COOKOFF)

## RECIPE SUBMISSION

- Contestants are required to include the recipe for each entry typed on an 8.5" x 11" sheet of white paper. In addition, the contestant's name, address, and phone number must be printed on the backside of the recipe.
- All recipes must list all ingredients with instructions on preparation in the order of ingredient usage. Incomplete recipes will not be used in the cookbook.
- Any recipe that has been precisely copied or photo-copied from any magazine, letter, newspaper, cookbook, or other publication will not be accepted.
- Must use U.S. standard measurements in the recipe. The use of metric system measurement is not acceptable.

## CATEGORIES



- CL10. CHOCOLATE (WITH OR WITHOUT ADDITIONS)
- CL11. VANILLA (WITH OR WITHOUT ADDITIONS)
- CL12. FRUIT
- CL13. NUTS
- CL14. ANY OTHER (CREAMY MARSHMALLOW, PEPPERMINT, ETC.)

# THE ULTIMATE GRILLED CHEESE SANDWICH CHALLENGE

THURSDAY, OCTOBER 10, 2024  
CHECK-IN 9:00 - 10:30 A.M. • JUDGING 10:30 A.M.

SPECIAL BEST OF SHOW PRIZE AWARDED BY:



## CONTEST DESCRIPTION

Contestants will create and bring a spectacular grilled cheese sandwich with all the "bells and whistles" to be presented to judges for evaluation.

## ENTRY REQUIREMENTS:

Contestant may enter up to **2 categories** in this contest. **One entry per category.**

AMATEURS ONLY

\$2 PER ENTRY

ALL AGES WELCOME

## RIBBONS & PRIZES:

Best of Show awarded once. Other ribbons awarded in each category.

PURPLE  
BLUE  
RED  
WHITE  
YELLOW

BEST OF SHOW  
1ST PLACE  
2ND PLACE  
3RD PLACE  
HONORABLE MENTION

\$200  
\$15  
\$10  
\$5  
RIBBON

## CONTEST RULES



Cooking Contests are open to amateurs only. No professional cooks or culinary teachers may enter. Contestants cannot enter the same recipe twice in any 2024 contest.

- Can enter both categories.
- One convenience item allowed.
- Store bought bread allowed.

## JUDGING CRITERIA

Judging based on taste, creativity, and presentation.

# THE ULTIMATE GRILLED CHEESE SANDWICH CHALLENGE

THURSDAY, OCTOBER 10, 2024  
CHECK-IN 9:00 - 10:30 A.M. • JUDGING 10:30 A.M.

SPECIAL BEST OF SHOW  
PRIZE AWARDED BY:



## ENTRY PROCESS



- Online pre-registration for this contest is **REQUIRED**.
- Contestants must register and turn in completed entries by 10:30 a.m. on contest day as specified.
- No preparation of entry will be allowed after 10:30 a.m. unless approved by the Director of Creative Arts.



## REGISTER TODAY!

SCAN THE QR CODE OR VISIT [CREATIVE.BIGTEX.COM](https://creative.bigtex.com)

## RECIPE SUBMISSION

- Contestants are required to include the recipe for each entry typed on an 8.5" x 11" sheet of white paper. In addition, the contestant's name, address, and phone number must be printed on the backside of the recipe.
- All recipes must list all ingredients with instructions on preparation in the order of ingredient usage. Incomplete recipes will not be used in the cookbook.
- Any recipe that has been precisely copied or photo-copied from any magazine, letter, newspaper, cookbook, or other publication will not be accepted.
- Must use U.S. standard measurements in the recipe. The use of metric system measurement is not acceptable.

## CATEGORIES



- CM10. ANY COMBO WITH MEAT
- CM11. ANY COMBO WITHOUT MEAT

# CHARCUTERIE BOARD CONTEST

THURSDAY, OCTOBER 10, 2024  
CHECK-IN 9:00 - 10:30 A.M. • JUDGING 10:30 A.M.

SPECIAL BEST OF SHOW PRIZE AWARDED BY:



## CONTEST DESCRIPTION

Contestants must make a creative and attractive handmade charcuterie board to be presented to judges for evaluation.

## ENTRY REQUIREMENTS:

Contestant may enter up to 4 categories in this contest. One entry per category.

AMATEURS ONLY

\$2 PER ENTRY

ALL AGES WELCOME

## RIBBONS & PRIZES:

Best of Show awarded once. Other ribbons awarded in each category.

PURPLE  
BLUE  
RED  
WHITE  
YELLOW

BEST OF SHOW  
1ST PLACE  
2ND PLACE  
3RD PLACE  
HONORABLE MENTION

\$200  
\$15  
\$10  
\$5  
RIBBON

## CONTEST RULES



Cooking Contests are open to amateurs only. No professional cooks or culinary teachers may enter. Contestants cannot enter the same recipe twice in any 2024 contest.

- Contestants may enter up to four categories. Only one entry per category.
- Entries should be displayed on a board, tray, or platter (minimum size of 6" x 6" to a maximum of 14" x 14").
- Mixes and convenience items allowed.
- Some non-food items may be used for garnish.
- It may be tasted but not necessarily, as it will not be judged on taste.

## JUDGING CRITERIA

Entries are judged on creativity and presentation.



# CHARCUTERIE BOARD CONTEST

THURSDAY, OCTOBER 10, 2024  
CHECK-IN 9:00 - 10:30 A.M. • JUDGING 10:30 A.M.

SPECIAL BEST OF SHOW  
PRIZE AWARDED BY:



## ENTRY PROCESS

---



- Online pre-registration for this contest is **REQUIRED**.
- Contestants must register and turn in completed entries by 10:30 a.m. on contest day as specified.
- No preparation of entry will be allowed after 10:30 a.m. unless approved by the Director of Creative Arts.



## REGISTER TODAY!

SCAN THE QR CODE OR VISIT [CREATIVE.BIGTEX.COM](https://creative.bigtex.com)

## CATEGORIES

---



- CN10.** BREAKFAST BOARD
- CN11.** FAIR-INSPIRED
- CN12.** FALL BOARD
- CN13.** JARCUTERIE BOARD (6 JARS)

# YOUTH COOKING CONTEST

SATURDAY, OCTOBER 12, 2024  
CHECK-IN 9:00 - 10:30 A.M. • JUDGING 10:30 A.M.

SPECIAL BEST OF SHOW  
PRIZE AWARDED BY:

STATE FAIR  
OF  
TEXAS®

## CONTEST DESCRIPTION

Contestants must bring their homemade entries to be presented to a panel of judges for evaluation.

## ENTRY REQUIREMENTS:

Contestant may enter up to 6 categories in this contest. One entry per category.

AMATEURS ONLY

\$2 PER ENTRY

ALL AGES WELCOME

## RIBBONS & PRIZES:

Best of Show awarded once to Junior and Child Divisions. Other ribbons awarded in each category.

PURPLE  
BLUE  
RED  
WHITE  
YELLOW

BEST OF SHOW  
1ST PLACE  
2ND PLACE  
3RD PLACE  
HONORABLE MENTION

\$200  
\$15  
\$10  
\$5  
RIBBON

## CONTEST RULES



Cooking Contests are open to amateurs only. No professional cooks or culinary teachers may enter. Contestants cannot enter the same recipe twice in any 2024 contest.

- Contestants may enter up to six categories. One entry per category.
- Each entry must include at least 1½ dozen cookies, candies, or cupcakes.
- One convenience item allowed.
- No mixes or alcohol allowed.
- Limited refrigeration available.

## JUDGING CRITERIA

Entries will be judged on taste and texture.

# YOUTH COOKING CONTEST

SATURDAY, OCTOBER 12, 2024  
CHECK-IN 9:00 - 10:30 A.M. • JUDGING 10:30 A.M.

SPECIAL BEST OF SHOW  
PRIZE AWARDED BY:

STATE FAIR  
OF  
TEXAS®

## ENTRY PROCESS



- Online pre-registration for this contest is **REQUIRED**.
- Contestants must register and turn in completed entries by 10:30 a.m. on contest day as specified.
- No preparation of entry will be allowed after 10:30 a.m. unless approved by the Director of Creative Arts.



## REGISTER TODAY!

SCAN THE QR CODE OR VISIT [CREATIVE.BIGTEX.COM](https://creative.bigtex.com)

## RECIPE SUBMISSION

- Contestants are required to include the recipe for each entry typed on an 8.5" x 11" sheet of white paper. In addition, the contestant's name, address, and phone number must be printed on the backside of the recipe.
- All recipes must list all ingredients with instructions on preparation in the order of ingredient usage. Incomplete recipes will not be used in the cookbook.
- Any recipe that has been precisely copied or photo-copied from any magazine, letter, newspaper, cookbook, or other publication will not be accepted.
- Must use U.S. standard measurements in the recipe. The use of metric system measurement is not acceptable.

## CATEGORIES



### JUNIOR DIVISION (AGE 13 TO 17)

#### CANDY

- CP10. FUDGE (ANY)
- CP11. DIVINITY
- CP12. MINTS
- CP13. HAND-DIPPED CHOCOLATES (CRÈME FILLING)
- CP14. BARK (PEPPERMINT, NUT, ETC.)

#### CAKE BAKING

*Layer, loaf, bundt, or sheet.*

- CP15. CHOCOLATE
- CP16. WHITE / YELLOW
- CP17. POUND
- CP18. SPICE
- CP19. CUPCAKES

#### COOKIES

- CP20. DROP
- CP21. BARS
- CP22. HOLIDAY OR PARTY

# YOUTH COOKING CONTEST

SATURDAY, OCTOBER 12, 2024  
CHECK-IN 9:00 - 10:30 A.M. • JUDGING 10:30 A.M.

SPECIAL BEST OF SHOW  
PRIZE AWARDED BY:

STATE FAIR  
OF  
TEXAS®

## CATEGORIES

---



### CHILD DIVISION (12 YRS. & YOUNGER)

#### COOKIES

- CP23. DROP
- CP24. BARS
- CP25. BROWNIES
- CP26. HOLIDAY OR PARTY
- CP27. COOKIE ON A STICK (ANY)

#### CANDY

- CP28. FUDGE (ANY)
- CP29. BARK (PEPPERMINT, NUT, ETC.)
- CP30. OTHER CANDY (ANY)

# INTERNATIONAL CUISINE CONTEST

SUNDAY, OCTOBER 13, 2024  
CHECK-IN 9:00 - 10:30 A.M. • JUDGING 10:30 A.M.

SPECIAL BEST OF SHOW  
PRIZE AWARDED BY:



## CONTEST DESCRIPTION

Contestants must bring their homemade entries to be presented to a panel of judges for evaluation.

## ENTRY REQUIREMENTS:

Contestant may enter up to **6 categories** in this contest. **One entry per category.**

AMATEURS ONLY

\$2 PER ENTRY

ALL AGES WELCOME

## RIBBONS & PRIZES:

Best of Show awarded once. Other ribbons awarded in each category.

PURPLE  
BLUE  
RED  
WHITE  
YELLOW

BEST OF SHOW  
1ST PLACE  
2ND PLACE  
3RD PLACE  
HONORABLE MENTION

\$200  
\$15  
\$10  
\$5  
RIBBON

## CONTEST RULES



**Cooking Contests are open to amateurs only.** No professional cooks or culinary teachers may enter. **Contestants cannot enter the same recipe twice in any 2024 contest.**

- Contestants may enter up to six categories. One entry per category.
- Entries may be any signature dish from the country of the category chosen.
- No mixes allowed.
- Limited refrigeration available.

## JUDGING CRITERIA

Entries will be judged on taste and appearance.

# INTERNATIONAL CUISINE CONTEST

SUNDAY, OCTOBER 13, 2024  
CHECK-IN 9:00 - 10:30 A.M. • JUDGING 10:30 A.M.

SPECIAL BEST OF SHOW  
PRIZE AWARDED BY:



## ENTRY PROCESS



- Online pre-registration for this contest is **REQUIRED**.
- Contestants must register and turn in completed entries by 10:30 a.m. on contest day as specified.
- No preparation of entry will be allowed after 10:30 a.m. unless approved by the Director of Creative Arts.



## REGISTER TODAY!

SCAN THE QR CODE OR VISIT [CREATIVE.BIGTEX.COM](https://creative.bigtex.com)

## RECIPE SUBMISSION

- Contestants are required to include the recipe for each entry typed on an 8.5" x 11" sheet of white paper. In addition, the contestant's name, address, and phone number must be printed on the backside of the recipe.
- All recipes must list all ingredients with instructions on preparation in the order of ingredient usage. Incomplete recipes will not be used in the cookbook.
- Any recipe that has been precisely copied or photo-copied from any magazine, letter, newspaper, cookbook, or other publication will not be accepted.
- Must use U.S. standard measurements in the recipe. The use of metric system measurement is not acceptable.

## CATEGORIES



- CQ10. BOLIVIA
- CQ11. CANADA
- CQ12. ITALY
- CQ13. JAPAN
- CQ14. KOREA
- CQ15. POLYNESIAN
- CQ16. THAILAND
- CQ17. VIETNAM

# SPEEDY DISHES CONTEST

TUESDAY, OCTOBER 15, 2024  
CHECK-IN 9:00 - 10:30 A.M. • JUDGING 10:30 A.M.

SPECIAL BEST OF SHOW PRIZE AWARDED BY:



## CONTEST DESCRIPTION

Contestants must bring their homemade entries to be presented to a panel of judges for evaluation.

## ENTRY REQUIREMENTS:

Contestant may enter up to **6 categories** in this contest. **One entry per category.**

AMATEURS ONLY

\$2 PER ENTRY

ALL AGES WELCOME

## RIBBONS & PRIZES:

Best of Show awarded once. Other ribbons awarded in each category.

PURPLE  
BLUE  
RED  
WHITE  
YELLOW

BEST OF SHOW  
1ST PLACE  
2ND PLACE  
3RD PLACE  
HONORABLE MENTION

\$200  
\$15  
\$10  
\$5  
RIBBON

## CONTEST RULES



**Cooking Contests are open to amateurs only.** No professional cooks or culinary teachers may enter. **Contestants cannot enter the same recipe twice in any 2024 contest.**

- Contestants may enter up to six categories. One entry per category.
- Your dish may have a maximum of six ingredients, excluding salt, pepper, oil, and water. All ingredients may be convenience items (e.g., canned soup, cake mix, salad dressing, etc.)
- The total number of convenience ingredients may not exceed six products.
- Limited refrigeration available.

## JUDGING CRITERIA

Entries will be judged on taste, appearance, and ease of preparation.

# SPEEDY DISHES CONTEST

TUESDAY, OCTOBER 15, 2024  
CHECK-IN 9:00 - 10:30 A.M. • JUDGING 10:30 A.M.

SPECIAL BEST OF SHOW  
PRIZE AWARDED BY:



## ENTRY PROCESS



- Online pre-registration for this contest is **REQUIRED**.
- Contestants must register and turn in completed entries by 10:30 a.m. on contest day as specified.
- No preparation of entry will be allowed after 10:30 a.m. unless approved by the Director of Creative Arts.



# REGISTER TODAY!

SCAN THE QR CODE OR VISIT [CREATIVE.BIGTEX.COM](https://creative.bigtex.com)

## RECIPE SUBMISSION

- Contestants are required to include the recipe for each entry typed on an 8.5" x 11" sheet of white paper. In addition, the contestant's name, address, and phone number must be printed on the backside of the recipe.
- All recipes must list all ingredients with instructions on preparation in the order of ingredient usage. Incomplete recipes will not be used in the cookbook.
- Any recipe that has been precisely copied or photo-copied from any magazine, letter, newspaper, cookbook, or other publication will not be accepted.
- Must use U.S. standard measurements in the recipe. The use of metric system measurement is not acceptable.

## CATEGORIES



- CR10. APPETIZER
- CR11. MAIN DISH
- CR12. VEGETABLE SIDE DISH
- CR13. SALAD
- CR14. BARK (PEPPERMINT, NUT, ETC.)
- CR15. OTHER DESSERT (ANY)
- CR16. SNACK



# FAIR CONCOCTIONS CONTEST

TUESDAY, OCTOBER 15, 2024  
CHECK-IN 9:00 - 10:30 A.M. • JUDGING 10:30 A.M.

SPECIAL BEST OF SHOW PRIZE AWARDED BY:



## CONTEST DESCRIPTION

Contestants must bring their homemade entries to be presented to a panel of judges for evaluation.

## ENTRY REQUIREMENTS:

Contestant may enter up to 3 categories in this contest. One entry per category.

AMATEURS ONLY

\$2 PER ENTRY

ALL AGES WELCOME

## RIBBONS & PRIZES:

Best of Show awarded once. Other ribbons awarded in each category.

PURPLE  
BLUE  
RED  
WHITE  
YELLOW

BEST OF SHOW  
1ST PLACE  
2ND PLACE  
3RD PLACE  
HONORABLE MENTION

\$200  
\$15  
\$10  
\$5  
RIBBON

## CONTEST RULES



Cooking Contests are open to amateurs only. No professional cooks or culinary teachers may enter. Contestants cannot enter the same recipe twice in any 2024 contest.

- Contestants may enter up to three categories. One entry per category.
- Must have 12 servings per category.
- One convenience item allowed.
- No mixes allowed.
- Limited refrigeration available.

## JUDGING CRITERIA

Entries will be judged on taste, creativity, and appearance.

# FAIR CONCOCTIONS CONTEST

TUESDAY, OCTOBER 15, 2024  
CHECK-IN 9:00 - 10:30 A.M. • JUDGING 10:30 A.M.

SPECIAL BEST OF SHOW  
PRIZE AWARDED BY:

The logo for Big Tex, featuring the words "Big Tex" in a stylized, cursive script font.

## ENTRY PROCESS



- Online pre-registration for this contest is **REQUIRED**.
- Contestants must register and turn in completed entries by 10:30 a.m. on contest day as specified.
- No preparation of entry will be allowed after 10:30 a.m. unless approved by the Director of Creative Arts.



## REGISTER TODAY!

SCAN THE QR CODE OR VISIT [CREATIVE.BIGTEX.COM](https://creative.bigtex.com)

## RECIPE SUBMISSION

- Contestants are required to include the recipe for each entry typed on an 8.5" x 11" sheet of white paper. In addition, the contestant's name, address, and phone number must be printed on the backside of the recipe.
- All recipes must list all ingredients with instructions on preparation in the order of ingredient usage. Incomplete recipes will not be used in the cookbook.
- Any recipe that has been precisely copied or photo-copied from any magazine, letter, newspaper, cookbook, or other publication will not be accepted.
- Must use U.S. standard measurements in the recipe. The use of metric system measurement is not acceptable.

## CATEGORIES



- CS10. SWEET
- CS11. SAVORY
- CS12. ON A STICK

# CHICKEN OR THE EGG CONTEST

WEDNESDAY, OCTOBER 16, 2024  
CHECK-IN 9:00 - 10:30 A.M. • JUDGING 10:30 A.M.

SPECIAL BEST OF SHOW  
PRIZE AWARDED BY:



## CONTEST DESCRIPTION

Contestants will bring their homemade dishes to be presented to a panel of judges for evaluation.

## ENTRY REQUIREMENTS:

Contestant may enter up to **6 categories** in this contest. **One entry per category.**

AMATEURS ONLY

\$2 PER ENTRY

ALL AGES WELCOME

## RIBBONS & PRIZES:

Best of Show awarded once. Other ribbons awarded in each category.

PURPLE  
BLUE  
RED  
WHITE  
YELLOW

BEST OF SHOW  
1ST PLACE  
2ND PLACE  
3RD PLACE  
HONORABLE MENTION

\$200  
\$15  
\$10  
\$5  
RIBBON

## CONTEST RULES



**Cooking Contests are open to amateurs only.** No professional cooks or culinary teachers may enter. **Contestants cannot enter the same recipe twice in any 2024 contest.**

- Contestants may enter up to six categories. One entry per category.
- One convenience product allowed.
- No mixes.
- Refrigeration provided as needed.

## JUDGING CRITERIA

Judging will be based on taste, texture & appearance.

# CHICKEN OR THE EGG CONTEST

WEDNESDAY, OCTOBER 16, 2024  
CHECK-IN 9:00 - 10:30 A.M. • JUDGING 10:30 A.M.

SPECIAL BEST OF SHOW  
PRIZE AWARDED BY:



## ENTRY PROCESS



- Online pre-registration for this contest is **REQUIRED**.
- Contestants must register and turn in completed entries by 10:30 a.m. on contest day as specified.
- No preparation of entry will be allowed after 10:30 a.m. unless approved by the Director of Creative Arts.



## REGISTER TODAY!

SCAN THE QR CODE OR VISIT [CREATIVE.BIGTEX.COM](http://CREATIVE.BIGTEX.COM)

## RECIPE SUBMISSION

- Contestants are required to include the recipe for each entry typed on an 8.5" x 11" sheet of white paper. In addition, the contestant's name, address, and phone number must be printed on the backside of the recipe.
- All recipes must list all ingredients with instructions on preparation in the order of ingredient usage. Incomplete recipes will not be used in the cookbook.
- Any recipe that has been precisely copied or photo-copied from any magazine, letter, newspaper, cookbook, or other publication will not be accepted.
- Must use U.S. standard measurements in the recipe. The use of metric system measurement is not acceptable.

## CATEGORIES



### CHICKEN

- CT10. HORS D'OEUVRES
- CT11. SALAD
- CT12. ENTREE
- CT13. CASSEROLE

### EGG

- CT14. HORS D'OEUVRES
- CT15. SALAD
- CT16. ENTREE
- CT17. DESSERT

# COBBLER COOK-OFF

THURSDAY, OCTOBER 17, 2024  
CHECK-IN 9:00 • JUDGING 12:00 P.M.

SPECIAL BEST OF SHOW  
PRIZE AWARDED BY:



## CONTEST DESCRIPTION

This is an on-site Cobbler cook-off where all cooking will occur during the Fair in front of a live audience and will be presented to judges for evaluation.

## ENTRY REQUIREMENTS:

Contestant may enter up to **2 categories** in this contest. **One entry per category.**

**AMATEURS ONLY**

**\$3 PER ENTRY**

**ALL AGES WELCOME**

## RIBBONS & PRIZES:

Best of Show awarded once. Other ribbons awarded in each category.

PURPLE  
BLUE  
RED  
WHITE  
YELLOW

BEST OF SHOW  
1ST PLACE  
2ND PLACE  
3RD PLACE  
HONORABLE MENTION

\$200  
\$15  
\$10  
\$5  
RIBBON

## CONTEST RULES



**Cooking Contests are open to amateurs only.** No professional cooks or culinary teachers may enter. **Contestants cannot enter the same recipe twice in any 2024 contest.**

- Contestants may enter two categories. One entry per category.
- Contestants with an odd number will cook the fruit category first, and even numbers will cook the berry category first.
- Contestants must bring all ingredients and utensils to assemble the cobbler(s).
- No mixes allowed.
- Oven assignments will be drawn at check-in.

## JUDGING CRITERIA

Entries will be judged on taste, texture, and appearance.

# COBBLER COOK-OFF

THURSDAY, OCTOBER 17, 2024  
CHECK-IN 9:00 • JUDGING 12:00 P.M.

SPECIAL BEST OF SHOW  
PRIZE AWARDED BY:



## ENTRY PROCESS



- Pre-registration is required to be entered in the lotto drawing that will choose the 16 contestants by chance.
- All interested cooks must submit their registration no later than Monday, July 8, 2024. Each Cook-Off participant will be selected on Friday, July 12, 2024. Entry fees will be the responsibility of contestants if their names are drawn in the lottery, and Creative Arts will notify them regarding payment options.



SCAN THE QR CODE TO

**REGISTER TODAY!**

[BIGTEX.COM/COOKOFF](http://BIGTEX.COM/COOKOFF)

## RECIPE SUBMISSION

- Contestants are required to include the recipe for each entry typed on an 8.5" x 11" sheet of white paper. In addition, the contestant's name, address, and phone number must be printed on the backside of the recipe.
- All recipes must list all ingredients with instructions on preparation in the order of ingredient usage. Incomplete recipes will not be used in the cookbook.
- Any recipe that has been precisely copied or photo-copied from any magazine, letter, newspaper, cookbook, or other publication will not be accepted.
- Must use U.S. standard measurements in the recipe. The use of metric system measurement is not acceptable.

## CATEGORIES



**CU10.** ANY FRUIT (NO BERRIES)

**CU11.** ANY BERRY (ONE BERRY ONLY, NO FRUIT)

**CU12.** ANY COMBO (2 OR MORE MIXTURES OF FRUIT AND/OR BERRIES)

# TEX MEX CONTEST

SATURDAY, OCTOBER 19, 2024  
CHECK-IN 9:00 - 10:30 A.M. • JUDGING 10:30 A.M.

SPECIAL BEST OF SHOW  
PRIZE AWARDED BY:



## CONTEST DESCRIPTION

Contestants will bring their homemade entries to be presented to a panel of judges for evaluation.

## ENTRY REQUIREMENTS:

Contestant may enter up to **6 categories** in this contest. **One entry per category.**

AMATEURS ONLY

\$2 PER ENTRY

ALL AGES WELCOME

## RIBBONS & PRIZES:

Best of Show awarded once. Other ribbons awarded in each category.

PURPLE  
BLUE  
RED  
WHITE  
YELLOW

BEST OF SHOW  
1ST PLACE  
2ND PLACE  
3RD PLACE  
HONORABLE MENTION

\$200  
\$15  
\$10  
\$5  
RIBBON

## CONTEST RULES



**Cooking Contests are open to amateurs only.** No professional cooks or culinary teachers may enter. **Contestants cannot enter the same recipe twice in any 2024 contest.**

- Contestants may enter up to six categories. One entry per category.
- One convenience product allowed.
- No mixes allowed.
- Limited refrigeration available.

## JUDGING CRITERIA

Entries will be judged on taste and appearance.

# TEX MEX CONTEST

SATURDAY, OCTOBER 19, 2024

CHECK-IN 9:00 - 10:30 A.M. • JUDGING 10:30 A.M.

SPECIAL BEST OF SHOW  
PRIZE AWARDED BY:



## ENTRY PROCESS



- Online pre-registration for this contest is **REQUIRED**.
- Contestants must register and turn in completed entries by 10:30 a.m. on contest day as specified.
- No preparation of entry will be allowed after 10:30 a.m. unless approved by the Director of Creative Arts.



## REGISTER TODAY!

SCAN THE QR CODE OR VISIT [CREATIVE.BIGTEX.COM](https://creative.bigtex.com)

## RECIPE SUBMISSION

- Contestants are required to include the recipe for each entry typed on an 8.5" x 11" sheet of white paper. In addition, the contestant's name, address, and phone number must be printed on the backside of the recipe.
- **All recipes must list all ingredients with instructions on preparation in the order of ingredient usage.** Incomplete recipes will not be used in the cookbook.
- Any recipe that has been precisely copied or photo-copied from any magazine, letter, newspaper, cookbook, or other publication will not be accepted.
- Must use U.S. standard measurements in the recipe. The use of metric system measurement is not acceptable.

## CATEGORIES



- CV10. SALSA
- CV11. PARTY FOODS
- CV12. TACOS
- CV13. SOUP
- CV14. ENCHILADAS
- CV15. ENTRÉE
- CV16. DESSERT



# CANDY CONTEST

SUNDAY, OCTOBER 20, 2024  
CHECK-IN 9:00 - 10:30 A.M. • JUDGING 10:30 A.M.

SPECIAL BEST OF SHOW  
PRIZE AWARDED BY:



## CONTEST DESCRIPTION

Contestants will bring their homemade candy to be presented to a panel of judges for evaluation.

## ENTRY REQUIREMENTS:

Contestant may enter up to **6 categories** in this contest. **One entry per category.**

AMATEURS ONLY

\$2 PER ENTRY

ALL AGES WELCOME

## RIBBONS & PRIZES:

Best of Show awarded once. Other ribbons awarded in each category.

PURPLE  
BLUE  
RED  
WHITE  
YELLOW

BEST OF SHOW  
1ST PLACE  
2ND PLACE  
3RD PLACE  
HONORABLE MENTION

\$200  
\$15  
\$10  
\$5  
RIBBON

## CONTEST RULES



**Cooking Contests are open to amateurs only.** No professional cooks or culinary teachers may enter. **Contestants cannot enter the same recipe twice in any 2024 contest.**

- Contestants may enter up to six categories. One entry per category.
- Entry must include at least 1 ½ dozen candies in any container.
- No mixes allowed.
- No sauces allowed.
- Limited refrigeration available.

## JUDGING CRITERIA

Entries will be judged on taste, texture, and appearance.

# CANDY CONTEST

SUNDAY, OCTOBER 20, 2024

CHECK-IN 9:00 - 10:30 A.M. • JUDGING 10:30 A.M.

SPECIAL BEST OF SHOW  
PRIZE AWARDED BY:



## ENTRY PROCESS



- Online pre-registration for this contest is **REQUIRED**.
- Contestants must register and turn in completed entries by 10:30 a.m. on contest day as specified.
- No preparation of entry will be allowed after 10:30 a.m. unless approved by the Director of Creative Arts.



## REGISTER TODAY!

SCAN THE QR CODE OR VISIT [CREATIVE.BIGTEX.COM](https://creative.bigtex.com)

## RECIPE SUBMISSION

- Contestants are required to include the recipe for each entry typed on an 8.5" x 11" sheet of white paper. In addition, the contestant's name, address, and phone number must be printed on the backside of the recipe.
- All recipes must list all ingredients with instructions on preparation in the order of ingredient usage. Incomplete recipes will not be used in the cookbook.
- Any recipe that has been precisely copied or photo-copied from any magazine, letter, newspaper, cookbook, or other publication will not be accepted.
- Must use U.S. standard measurements in the recipe. The use of metric system measurement is not acceptable.

## CATEGORIES



- CW10. CARAMELS
- CW11. DIVINITY
- CW12. FUDGE, CHOCOLATE
- CW13. FUDGE, NO CHOCOLATE
- CW14. HAND-DIPPED CHOCOLATES
- CW15. HARD CANDY
- CW16. MINTS
- CW17. NUT BRITTLES
- CW18. NUT ROLL
- CW19. PRALINES
- CW20. TOFFEE



**REGISTRATION  
FORM**



## COOKING CONTEST ENTRY FORM

Participants must complete one form per Cooking Contest submission. Print or copy the form FOR EACH Cooking Contest you would like to enter. Bring completed entry form with you when you come to the contest.

|                        |  |                  |  |
|------------------------|--|------------------|--|
| <b>NAME OF CONTEST</b> |  |                  |  |
| <b>DATE OF CONTEST</b> |  | <b>ENTRY FEE</b> |  |

**CATEGORY NUMBER(S) YOU ARE ENTERING:**

|  |  |
|--|--|
|  |  |
|  |  |
|  |  |

**NAME:** \_\_\_\_\_ **AGE:** \_\_\_\_\_

**DID YOU ENTER IN THE LAST FOUR YEARS?:**       YES  NO

**IF YES, GIVE YOUR CONTESTANT NUMBER:** \_\_\_\_\_

**ADDRESS:** \_\_\_\_\_

**ARE YOU A FIRST TIME CONTESTANT IN CREATIVE**

\_\_\_\_\_

**ARTS COOKING CONTESTS?:**       YES  NO

**CITY:** \_\_\_\_\_ **STATE:** \_\_\_\_\_ **ZIP:** \_\_\_\_\_

**DAYTIME PHONE:** \_\_\_\_\_

**EMAIL:** \_\_\_\_\_

By submitting this Entry Form and as a condition of entry in the State Fair of Texas contest, I certify that I have read, understand, and will abide by the rules and regulations as stated on this website and in the 2024 State Fair of Texas Creative Arts Handbook, as defined by State Fair's Creative Arts Dept. I acknowledge that all of the above-stated information and representations are true and correct.

Should I place with a ribbon in a State Fair of Texas cooking content (including the Canning Contest,) I will grant the State Fair of Texas a perpetual, irrevocable, nonexclusive right and license to use my entry (recipe and/or image) in association with all activities, publications, websites, social media sites, and the like of the State Fair of Texas, in all media now known or later developed, without compensation.

The State Fair of Texas owns the copyrights of any photographs of my entry taken on the fairgrounds or in any coordinated photo shoot. I hereby grant permission to the State Fair of Texas the perpetual right to use, post, publish, and display photographs and/or videos taken of me on the fairgrounds related to the Creative Arts competitions in materials and online communications related to the mission of the State Fair of Texas without compensation.

Parents/guardians ("Parents") registering contestants, under the age of 18, in a Creative Arts contest are providing consent for their child to enter the contest and such Parents hereby grant to the State Fair of Texas the same rights on behalf of their children as noted above in the rights granted to the State Fair of Texas by contestants 18 and older.

Entry fees will not be refunded or transferred, but categories may be changed after the entry is received.