

STATE FAIR OF TEXAS®

★ 2023 ★

# ARTS & CRAFTS GUIDE



[BIGTEX.COM/CREATIVE](https://www.bigtex.com/creative)



# I WANT TO ENTER MY CRAFT PROJECT

## WHERE DO I BEGIN?

### ➡ HOWDY CRAFTERS!

We invite you to be a part of a State Fair of Texas tradition – The Arts & Crafts Contests. Whether you like to needle point or prefer to paint, we have 14 contests with more than 1,100 categories for crafters at every skill level. We have created a guide to help you navigate the entry process.

If you have any questions or need assistance, please contact us. Get creative and be part of this year's competition!

*Kathy Bennett*  
DIRECTOR, CREATIVE ARTS



## ENTERING AN ARTS & CRAFTS CONTEST IS AS EASY AS...

- 1 CHOOSE A CONTEST**  
The Fair has 14 different contests ranging from photography to scale models.
- 2 PICK A CATEGORY**  
Each contest has a variety of different categories that target different age groups and crafting skills.
- 3 REGISTER ONLINE**  
Simply go to [www.BigTex.com/Creative](http://www.BigTex.com/Creative) and find the registration button to register your creative masterpiece(s).
- 4 DROP YOUR ENTRIES OFF**  
All entries must be dropped off at the Creative Arts Building in Fair Park between **Friday, August 4**, and **Sunday, August 6, 2023**, for judging. Winning entries will be announced via email on **August 23, 2023** and displayed in the Creative Arts Building during the run of the Fair. Contestants will pick up any non-winning entries before the Fair and winning entries will be picked up after the Fair.

ENTRIES CAN BE MAILED TO THE STATE FAIR OF TEXAS. SEE THE "THINGS TO KNOW" PAGE FOR DETAILS.



**WWW.BIGTEX.COM/CREATIVE**  
EMAIL [CREATIVEARTS@BIGTEX.COM](mailto:CREATIVEARTS@BIGTEX.COM) WITH ANY QUESTIONS





# WHO CAN ENTER A CONTEST?

 **FAIR FANS OF ALL AGES** and all skill levels can enter the Arts & Crafts contests.

We offer a variety of contests and categories that are age-specific or for professionals and teachers. The State Fair of Texas encourages all Fair fans to enter.



## ADULT AMATEUR (18+ YEARS OF AGE)

Anyone age 18 and over, who engages in the contests subject matter as a hobby, is welcome to enter any of the categories designated in the Adult Amateur Divisions. NOTE: Seniors compete in all Adult Amateur Divisions.

## YOUTH (JUNIOR – 13 TO 17 / CHILD – 12 & YOUNGER)

The Fair has designated special categories for those ages 17 and under. Many of our contests have both a Junior Division and a Child Division to better match the skill sets of our younger contestants.

## TEACHER & PROFESSIONALS

The Fair has created special categories for Fair fans whose skill level is beyond that of an amateur. Designated “Teacher & Professional” categories are for individuals who list and sell items (related to the subject matter of the contest) on a personal website, global marketing platform, or social media site. Additionally, anyone who teaches and/or instructs a particular craft or skill (related to the subject matter of the contest) should enter the designated “Teacher & Professional” categories. The Fair does not consider the amount of money earned per year related to the sales or teaching as a factor in determining contestant type.

For those entering the Canning Contest, a contestant is considered a “Teacher & Professional” if that individual has edited, produced, printed, and/or published a cookbook for professional gain. Additionally, if a contestant sells their canned goods on a personal website, global marketing platform, social media site, or in a physical store.

## CONTESTANT FEES

AMATEUR ADULTS TEACHER & PROFESSIONAL	SENIORS (70+ YRS. OF AGE)	JUNIORS (AGE 13 TO 17)	CHILD (12 YRS. & YOUNGER)
\$5	\$2	\$4	\$3
CONTESTANTS PAY A FEE PER ENTRY. FEES TO ENTER A CONTEST DEPEND ON YOUR AGE WITH THE EXCEPTION OF A FEW CONTESTS. ANY VARIATION ON THE FEES ARE OUTLINED ON EACH CONTEST.			

# WHAT CONTEST CAN I ENTER?

➡ **THE STATE FAIR OF TEXAS OFFERS 14 Arts & Crafts Contests** and more than 1,100 categories for crafters at every skill level. The list below outlines each contest and the different types of categories in each contest.

If you have questions about what contest/category best fits your entry, the Creative Arts team is available to help.

EMAIL QUESTIONS TO: [CREATIVEARTS@BIGTEX.COM](mailto:CREATIVEARTS@BIGTEX.COM)



**FINE ART** (Adult Amateur, Teacher & Professional, Junior, Child)  
Drawing and painting projects in a variety of mediums.

**CERAMICS AND HAND-PAINTED CHINA**  
(Adult Amateur, Teacher & Professional, Junior, Child)  
Ceramic and polymer clay projects with variety of sculpting and glazing techniques.

**DESIGNER CRAFTSMAN**  
(Adult Amateur, Teacher & Professional, Junior, Child)  
Wood working, leathercraft, jewelry, stained glass, scrapbooking, mosaic tile, and textile projects.

**DOLLS** (Adult Amateur/Junior, Child)  
Collectable and hand-crafted dolls, bears and animals.  
Dollhouses and miniatures.

**CANNING** (All Ages compete in same division)  
Canned vegetables, fruit, preserves, marmalades, jellies, jams, butters, pickles, and relish.

**HOBBY COLLECTIONS** (Adult Amateur)  
Collections of only two items, 30-year-old+, non-identical items or one antique item 100 years old or more.

**HOLIDAY CORNER** (All Ages compete in same division)  
Seasonal and holiday decorations.

**NEEDLEPOINT, CREWEL, AND COUNTED CROSS STITCH**

(Adult Amateur, Teacher & Professional, Junior, Child)  
Painted canvas, petit point, bargello, plastic canvas, and specialty stitch needlepoint projects.

**NEEDLEWORK AND SEWING**

(Adult Amateur, Teacher & Professional, Junior, Child)  
Crochet, knitting, bobbin lace, smocking, and sewing machine projects.

**AFGHAN, RUGS, QUILTS, AND BEDSPREADS**

(Adult Amateur, Junior, Child)  
Afghans, quilts and quilted accessories, bedspreads, and rugs.

**PHOTOGRAPHY**

(Adult Amateur, Teacher & Professional, Junior, Child)  
Black & white and color photography featuring a variety of subjects.

**SCALE MODEL** (Adult Amateur, Junior, Child)  
Kit, kit conversion, scratch-built models, Legos®, and diorama projects

**GLUE-A-SHOE** (Adult Amateur, Junior/Child)  
Funny, witty diorama or sculpture using one shoe.

**GREAT PUMPKIN CHALLENGE**

(Adult Amateur, Junior, Child)  
Decorated artificial pumpkins in Halloween and State Fair-themes.

## HOW ARE ENTRIES JUDGED?

Entries are judged against entries within the same category based on individual merit. 1st place, 2nd place, 3rd place, and Honorable Mention ribbons are awarded to the top entries in each category of every contest.

WINNING ENTRIES ARE ANNOUNCED IN LATE AUGUST AND ENTRIES WILL BE ON DISPLAY FOR THE DURATION OF THE FAIR.

## BEST OF SHOW

The Best of Show award recognizes each contest's highest scoring entry out of all categories in an age division. Some contests, divisions, or categories may not be eligible for Best of Show and will be noted in the contest rules.

## DIRECTOR'S AWARD

The Director of Creative Arts Department will select one entry representing the superior craftsmanship and creativity from all the Arts & Crafts entries. The Director's Award recipient will receive a \$750 award, and the entry will be prominently displayed during the Fair.

# ★ THINGS TO KNOW ABOUT ★ ENTERING A CONTEST

All entries in the Arts & Craft contests should follow these general rules. Each contest has its own set of rules and guidelines to the number of entries allowed.

- Entries in the Arts & Crafts contests must be appropriate for family viewing at the Fair.
- Any entry that previously won a ribbon in a State Fair contest may not be re-entered.
- All handmade entries must be made by only the participant, unless entered into a two-person or group category as specified.
- Entries that contain edible components are prohibited except for the Canning Contest.
- The State Fair of Texas does not accept soiled, damaged, or broken items.
- Contestants must adhere to the age and skill divisions. If an entry is to be found in violation of the policy, it will be disqualified.

## Security

For entries waiting to be judged and those on display during the run of the Fair, the State Fair of Texas provides building security and surveillance around the clock, and every precaution is taken to protect all entered items. Any additional insurance or security deemed necessary by the contestant must be provided by that individual.

## Submitting Your Entry

Contestants must register their items online at [BigTex.com/Creative](http://BigTex.com/Creative). Entries can be hand delivered to the fairgrounds, or mailed to the Creative Arts Department.

## Hand-Delivered Entries

The Fair will accept entries for three days in the beginning of August as outlined on the key dates. The map shows directions to the Creative Arts Building and parking information.

Non-winning entries will be picked up prior to the Fair on the designated days. Winning entries will be on display for the duration of the Fair and picked up on the designated days following the Fair.

## Mail-In Entries

All entries **MUST** arrive before the entry deadline (July 24) and must include:

- Copy of registration confirmation.
- Return postage either in the form of prepaid postage, check, or money order.

Entries winning and non-winning will be returned no later than three weeks after the closing of the Fair.

## UPS or FEDEX address:

State Fair of Texas  
Attn: Creative Arts Dept.  
1327 Admiral Nimitz Circle  
Dallas, TX 75210

## U.S. Postal Service address:

State Fair of Texas  
Attn: Creative Arts Dept.  
P.O. Box 150009  
Dallas, TX 75315



## ARTS & CRAFTS CONTESTS

**MARCH 15**

ARTS & CRAFTS CONTEST GUIDE AVAILABLE  
FOR DOWNLOAD

**MAY 10**

ONLINE REGISTRATION OPENS FOR ALL  
CONTESTS

**JULY 24**

REGISTRATION DEADLINE FOR ARTS &  
CRAFTS CONTESTS

**AUGUST 4 to 6**

ARTS & CRAFTS ENTRY DROP OFF

**AUGUST 23**

ARTS & CRAFTS WINNERS ANNOUNCED

**AUGUST 30 to SEPTEMBER 1**

PICK UP OF NON-WINNING ARTS &  
CRAFTS ENTRIES

**OCTOBER 25 to 27 (POST-FAIR)**

PICK UP OF WINNING ARTS &  
CRAFTS ENTRIES

# STATE FAIR OF TEXAS

## ★ 2023 ARTS & CRAFTS GUIDE ★

HOW TO ENTER GUIDE .....	01
2023 ARTS & CRAFTS CALENDAR .....	07
ARTS & CRAFTS CONTESTS {PRE-FAIR}	
<b>DEPARTMENT A</b> – FINE ART CONTEST .....	08
<b>DEPARTMENT B</b> – CERAMICS AND HAND-PAINTED CHINA CONTEST ...	11
<b>DEPARTMENT C</b> – DESIGNER CRAFTSMAN CONTEST .....	14
<b>DEPARTMENT D</b> – DOLLS CONTEST .....	18
<b>DEPARTMENT E</b> – CANNING CONTEST .....	20
<b>DEPARTMENT F</b> – HOBBY COLLECTIONS CONTEST .....	24
<b>DEPARTMENT G</b> – HOLIDAY CORNER CONTEST .....	27
<b>DEPARTMENT H</b> – NEEDLEPOINT, CREWEL, AND COUNTED CROSS STITCH CONTEST .....	29
<b>DEPARTMENT I</b> – NEEDLEWORK AND SEWING CONTEST .....	32
<b>DEPARTMENT J</b> – AFGHANS, RUGS, QUILTS, AND BEDSPREADS CONTEST .....	35
<b>DEPARTMENT K</b> – PHOTOGRAPHY CONTEST .....	39
<b>DEPARTMENT L</b> – SCALE MODELS CONTEST .....	43
<b>DEPARTMENT M</b> – GLUE-A-SHOE CONTEST .....	47
<b>DEPARTMENT N</b> – THE GREAT PUMPKIN CHALLENGE CONTEST .....	48
MAIL-IN ENTRY FORMS .....	52
PHOTOGRAPHY LABEL FORMS .....	55





# *Lucchese and the State Fair of Texas®*

HAVE TEAMED UP TO OFFER THREE **NEW** CATEGORIES FEATURING

## **BIG TEX'S BOOTS!**



Blue-ribbon winners in each category will receive a special swag bag from Lucchese, a Big Tex bobblehead, and four (4) season passes to the 2023 State Fair. **THE PRIZE VALUES AT OVER \$305.**



DUST OFF YOUR *picture* OF THE BIG GUY'S BOOTS  
OR CREATE A *work of art* INSPIRED BY THEM, AND ENTER ONE OF THESE  
NEW CATEGORIES IN THE *Arts & Crafts competition* AT THE FAIR THIS YEAR!

**CATEGORIES INCLUDE:**

**PHOTOGRAPHY - ADULT / FINE ART - ADULT AND JUNIORS**

# ARTS & CRAFTS

## — CONTEST CALENDAR —

*Find all rules, entry guidelines, and online registration for contests at:*



**BIGTEX.COM/CREATIVE**



*Forget-me-not...*

## 2023 IMPORTANT DATES:

**MARCH 15** Arts & Crafts Contest Guide Available for Download

**MAY 10** Online Registration Opens for All Contests

**JULY 24** Registration Deadline for Arts & Crafts Contests

**AUGUST 4–6** Arts & Crafts Entry Drop Off  
Friday to Sunday - 9 a.m. to 5 p.m.

**AUGUST 23** Arts & Crafts Winners Announced

**AUGUST 30–SEPT 1** Pick Up of Non-Winning Arts & Crafts Entries  
Wednesday to Friday - 9 a.m. to 5 p.m.

**POST-FAIR OCT 25–27** Pick Up of Winning Arts & Crafts Entries  
Wednesday & Thursday - 9 a.m. to 5 p.m.  
Friday - 9 a.m. to 7 p.m.



## FINE ART CONTEST



ENTRY FEES (PER ENTRY ITEM)				
ADULTS AMATEUR / TEACHER & PROFESSIONALS (18+ YRS. OF AGE)	SENIORS (70+ YRS. OF AGE)	JUNIORS (AGE 13 TO 17)	CHILD (12 YRS. & YOUNGER)	
\$5	\$2	\$4	\$3	
RIBBONS AND PRIZES				
BEST OF SHOW AWARDED ONCE PER DIVISION. OTHER RIBBONS AWARDED IN EACH CATEGORY.				
BEST OF SHOW	1ST PLACE	2ND PLACE	3RD PLACE	HONORABLE MENTION
ONCE PER DIVISION	BLUE RIBBON	RED RIBBON	WHITE RIBBON	YELLOW RIBBON
SPECIALTY AWARD				
<div><div><div>18183</div><div>LUCCHESI</div><div>BOOTMAKER</div><div>Lucchese</div><div>BIG TEX LUCCHESI BOOTS CONTEST</div></div></div>				
BLUE 1st Place				
SPECIAL SWAG BAG FROM LUCCHESI, (4) FOUR SEASON PASSES TO THE 2023 FAIR, AND A BIG TEX BOBBLEHEAD – ESTIMATED VALUE \$305.				



## COMPETITION INFORMATION AND RULES



### CONTEST RULES

- Entries for this department must be a **drawing or painting**.
- Artwork must be appropriate for family viewing.
- Artwork must be completely dry.
- Entry item must be 8" x 10" to a maximum of 36" x 36" and not weigh over 25 lbs., exception: miniatures.
- **All entries must be framed, with the exception of wrapped canvas.**
- All entries on paper must be framed without glass.
- Miniatures must be a minimum size of 2" x 5" to a maximum size of 5" x 5". Must be framed or mounted on a mat board. No abstract allowed.
- **All entries must have a wire or saw tooth hanger and be ready for hanging or will not be accepted.**
- Contestant's first and last name must be listed on the back of EACH entry.
- Entries must be the work of the contestant and must have been completed since September 1, 2022.

- Embellishments. (i.e., beads, ribbon, glitter, etc.) accepted in one category only – Art with Embellishments.
- See the "How to Enter" Guide on Page 1 for information on submitting a Creative Arts entry.

### PROHIBITED ENTRIES

Entries will not be accepted if they are:

- Framed glass of any kind. Item may use plexiglass, clear plastic, or no covering.
- Digital Art.
- Artwork that is not completely dry.

### MAXIMUM ENTRIES

- Adult and Junior Divisions – Maximum of six (6) categories, with one (1) entry per category.
- Child Division – Maximum of two (2) entries, only one (1) entry per category.



## CATEGORIES



### ADULT AMATEUR DIVISION

#### OIL / ACRYLIC / PASTEL

- A100.** STILL LIFE (I.E., FOOD, VEGETABLES, FLOWER(S), INANIMATE OBJECTS)
- A101.** LANDSCAPE WITH OR WITHOUT PEOPLE, FOWL, OR ANIMALS (SUMMER OR WINTER SCENE)
- A102.** ANIMAL
- A103.** PORTRAIT
- A104.** FANTASY / ABSTRACT
- A105.** SEASCAPE
- A106.** TOWN / CITYSCAPE / ARCHITECTURE / BUILDING
- A107.** NOSTALGIA
- A108.** OUTER SPACE
- A109.** ANY SUBJECT

#### ANY MEDIUM

- A110.** STATE FAIR THEME
- A111.** BIG TEX LUCCHESI BOOTS\*

#### WATERCOLOR

- A112.** LANDSCAPE / SEASCAPE
- A113.** ANIMAL
- A114.** PORTRAIT
- A115.** STILL LIFE (I.E., FOOD, VEGETABLES, FLOWER(S), INANIMATE OBJECTS)
- A116.** ANY SUBJECT

#### INK

*Includes Drawing / Printmaking*

- A117.** ANY SUBJECT

#### CHARCOAL OR PENCIL / SCRATCH ART

- A118.** ANIMAL
- A119.** PORTRAIT
- A120.** STILL LIFE (I.E., FOOD, VEGETABLES, FLOWER(S), INANIMATE OBJECTS)
- A121.** ANY SUBJECT

#### MIXED MEDIA

*Two mediums combined; example: charcoal & ink or acrylic & ink, etc.*

- A122.** ANIMAL
- A123.** ANY SUBJECT
- A124.** ART WITH EMBELLISHMENTS (ANY MEDIUM)
- A125.** POUR

#### MINIATURES

*2" x 2" minimum to 5" x 5" maximum*

- A126.** ANY MEDIUM (ANY SUBJECT)



## CATEGORIES



### TEACHER & PROFESSIONAL DIVISION

#### OIL / ACRYLIC / PASTEL

- A127. PORTRAIT
- A128. ANIMAL
- A129. ANY SUBJECT

#### WATERCOLOR

- A130. PORTRAIT
- A131. ANIMAL
- A132. ANY SUBJECT

#### DRAWING

- A133. PORTRAIT
- A134. ANIMAL
- A135. ANY SUBJECT

#### MIXED MEDIA

- A136. ANY SUBJECT
- A137. STATE FAIR THEME (ANY MEDIUM)

### JUNIOR DIVISION

#### OIL / ACRYLIC / PASTEL

- A138. ANIMAL
- A139. STILL LIFE (I.E., FOOD, VEGETABLES, FLOWER(S),  
INANIMATE OBJECTS)
- A140. LANDSCAPE / SEASCAPE
- A141. PORTRAIT
- A142. ABSTRACT
- A143. ANY SUBJECT

#### WATERCOLOR

- A144. ANIMAL
- A145. PORTRAIT
- A146. ANY SUBJECT

#### INK

- A147. ANIMAL
- A148. PORTRAIT
- A149. ANY SUBJECT

#### CHARCOAL OR PENCIL / SCRATCH ART

- A150. ANIMAL
- A151. LANDSCAPE / SEASCAPE
- A152. PORTRAIT
- A153. STILL LIFE (I.E., FOOD, VEGETABLES, FLOWER(S),  
INANIMATE OBJECTS)
- A154. ANY SUBJECT

#### ANY MEDIUM

- A155. TOWN / CITYSCAPE / ARCHITECTURE / BUILDING
- A156. STATE FAIR THEME
- A157. ART WITH EMBELLISHMENTS
- A158. BIG TEX LUCCHESI BOOTS\*

\*SPECIAL PRIZE FROM LUCCHESI FOR WINNER OF THIS CATEGORY.  
CREATE ART FEATURING BIG TEX'S CURRENT BOOTS.

### CHILD DIVISION

Child contestants may only enter categories within their age group.

#### 6 TO 9 YEARS OR YOUNGER

- A159. ANY SUBJECT
- A160. ANIMALS
- A161. STATE FAIR THEME

#### 10 TO 12 YEARS

- A162. ANY SUBJECT
- A163. ANIMALS
- A164. STATE FAIR THEME



# CERAMICS AND HAND-PAINTED CHINA CONTEST



ENTRY FEES (PER ENTRY ITEM)				
ADULTS AMATEUR / TEACHER & PROFESSIONALS (18+ YRS. OF AGE)	SENIORS (70+ YRS. OF AGE)	JUNIORS (AGE 13 TO 17)	CHILD (12 YRS. & YOUNGER)	
\$5	\$2	\$4	\$3	
RIBBONS AND PRIZES				
BEST OF SHOW AWARDED ONCE PER DIVISION. OTHER RIBBONS AWARDED IN EACH CATEGORY.				
BEST OF SHOW	1ST PLACE	2ND PLACE	3RD PLACE	HONORABLE MENTION
ONCE PER DIVISION	BLUE RIBBON	RED RIBBON	WHITE RIBBON	YELLOW RIBBON

## ★ ——— COMPETITION INFORMATION AND RULES ——— ★

### CONTEST RULES

- Entries must not exceed 18" L; 18" W; 18" H in size or 5 lbs. in weight, unless noted in category details.
- Entries must be the work of the contestant and must have been completed since September 1, 2022.
- Plate racks, jewelry display boards, etc., used must be provided by contestant.
- Proper hanging equipment must be included on hanging objects.
- See the "How to Enter" Guide on Page 1 for information on submitting a Creative Arts entry.

### PROHIBITED ENTRIES

- No broken or damaged items.

### MAXIMUM ENTRIES

- Adult and Junior Divisions - maximum of six (6) categories, with one (1) entry per category.
- Child Division - maximum of two (2) categories, with only one (1) entry per category.



## ADULT AMATEUR DIVISION

### CERAMICS / EARTHENWARE

#### B100. DECORATED CERAMICS

*(SLIP TRAILING, GLASS INLAY, ETC.)*

#### UNDERGLAZE

##### B101. COMBINATION *(OPAQUE & TRANSLUCENT)*

##### B102. SGRAFFITO

##### B103. MARBELIZING

##### B104. MISCELLANEOUS

#### GLAZE

##### B105. SINGLE GLAZE

##### B106. TEXTURED GLAZE

##### B107. CONTROLLED GLAZE

##### B108. MISCELLANEOUS

#### UNFIRED STAINS

##### B109. MISCELLANEOUS (ANY)

#### SEASONAL

##### B110. ANY OTHER HOLIDAY

##### B111. ANY ARTICLE OF CHRISTMAS

##### B112. STATE FAIR THEME

#### ORIGINALS IN CLAY

*Entries not to exceed 14".*

##### B113. HAND MODELING *(SLAB)*

##### B114. RAKU *(JAPANESE POTTERY TECHNIQUE)*

##### B115. SCULPTURE *(THREE-DIMENSIONAL)*

##### B116. BOWL

##### B117. CUP

##### B118. PLATE

##### B119. POT

##### B120. PITCHER

##### B121. VASE

##### B122. HAND-THROWN WHEEL WORK

##### B123. STONEWARE

##### B124. PORCELAIN

##### B125. FRETWORK

##### B126. INCISE

##### B127. MISCELLANEOUS

#### POLYMER CLAY

*Entries must be baked.*

##### B128. ANY ARTICLE

##### B129. JEWELRY

##### B130. BOXES

##### B131. SCULPTURE *(THREE-DIMENSIONAL)*

##### B132. VASE

#### HAND-PAINTED CHINA ON BLANKS

*Not eligible for Best of Show.*

##### B133. ANY SUBJECT



## CATEGORIES



### TEACHER & PROFESSIONAL DIVISION

*\*Eligible for Best Of Show.*

**B134.** HAND PAINTED CHINA ON BLANKS (STATE FAIR THEME)

*(NOT ELIGIBLE FOR BEST OF SHOW)*

**B135.** DECORATED (ANY)\*

**B136.** ORIGINALS IN CLAY (ANY)\*

**B137.** POLYMER CLAY (ANY)\*

### JUNIOR DIVISION

#### CERAMICS

**B138.** GLAZE

**B139.** UNDERGLAZE

**B140.** STAIN

**B141.** HAND MODELING

**B142.** MISCELLANEOUS

**B143.** HAND PAINTED CHINA ON BLANKS

*(NOT ELIGIBLE FOR BEST OF SHOW)*

#### POLYMER CLAY

*Entries must be baked.*

**B144.** ANY ARTICLE

**B145.** SCULPTURE

#### POTTERY

*Any three-dimensional artwork.*

**B146.** SCULPTURE

**B147.** ANY ARTICLE EXCEPT SCULPTURE

### CHILD DIVISION

**B148.** GLAZE

**B149.** UNDERGLAZE

**B150.** POLYMER CLAY (ANY ARTICLE, MUST BE BAKED)

**B151.** HAND MODELING (OTHER CLAY, MUST BE FIRED IN KILN)

**B152.** MISCELLANEOUS



# DESIGNER CRAFTSMAN CONTEST



ENTRY FEES (PER ENTRY ITEM)				
ADULTS AMATEUR / TEACHER & PROFESSIONALS (18+ YRS. OF AGE)	SENIORS (70+ YRS. OF AGE)	JUNIORS (AGE 13 TO 17)	CHILD (12 YRS. & YOUNGER)	
\$5	\$2	\$4	\$3	
RIBBONS AND PRIZES				
BEST OF SHOW AWARDED ONCE PER DIVISION. OTHER RIBBONS AWARDED IN EACH CATEGORY.				
BEST OF SHOW	1ST PLACE	2ND PLACE	3RD PLACE	HONORABLE MENTION
ONCE PER DIVISION	BLUE RIBBON	RED RIBBON	WHITE RIBBON	YELLOW RIBBON

## ★ ——— COMPETITION INFORMATION AND RULES ——— ★

### CONTEST RULES

- Entries must not exceed 36" L; 36" W; 36" H in size and 20 lbs. in weight, unless noted otherwise.
- Entries must be the work of the contestant and must have been completed since September 1, 2022.
- Hanging items (including stained glass, wood, and mosaic) must be sturdily equipped with proper hangers, chains, and screws.
- Judging based on quality of workmanship and originality of design.
- See the "How to Enter" Guide on Page 1 for information on submitting a Creative Arts entry.

### PROHIBITED ENTRIES

- No kits.
- No concrete items.
- No broken or damaged items.

### MAXIMUM ENTRIES

- Contestants may enter up to six (6) categories, with only one (1) entry allowed per category.

## ★ ——— CATEGORIES ——— ★

### ADULT AMATEUR DIVISION

#### EGG ART

*No artificial eggs.*

**C100.** DECORATED

**C101.** STATE FAIR THEME



## ADULT AMATEUR DIVISION (CONT.)

### LEATHERCRAFT

*Entries must be original designs cut and made by the contestant. Awards will be made on the originality, suitability, applied craftsmanship, general appearance of the embellished design, construction pattern, and material used creating the leather article.*

**C102.** ANY TOOLED LEATHER ARTICLE (CARVED / STAMPED / OR EMBOSSED)

**C103.** ANY LEATHER ARTICLE (HANDSEWN)

### MISCELLANEOUS CRAFTS

- **ASSEMBLAGE:** An artistic composition made from scraps, junk, odds and ends (such as paper, cloth, wood, stone, or metal). Usually three-dimensional.
- **COLLAGE:** An artistic composition made of various materials (such as paper, cloth, or wood) glued on a picture surface.
- **ENCAUSTIC PAINTING:** Also known as hot wax painting, involves using heated beeswax to which colored pigments are added. The liquid or paste is then applied to a surface – usually prepared wood, though canvas and other materials are often used.
- **FINE ART:** A visual art considered to have been created primarily for aesthetic and judged for its beauty and meaningfulness, specifically painting, drawing, watercolor, and so forth.
- **FOLK ART:** Rooted in traditions that come from community and culture – expressing cultural identity by conveying shared community values and aesthetics. It encompasses a range of utilitarian and decorative media including cloth, wood, paper, clay, metal, and more.

**C104.** METAL SCULPTURE

**C105.** STEEL SCULPTURE

**C106.** ANY FORGED ITEM

**C107.** SCULPTURE OTHER THAN ABOVE

**C108.** ANY CRAFT USING STATE FAIR THEME

**C109.** RECYCLED / FOUND ITEMS

**C110.** ASSEMBLAGE

**C111.** BASKETS

**C112.** QUILLING

**C113.** GREETING CARDS (GROUP OF THREE MAXIMUM)

**C114.** COLLAGE (ANY MATERIAL)

**C115.** PAPIER-MÂCHÉ

**C116.** ORIGAMI

**C117.** PAPER SCULPTURE

**C118.** ENCAUSTIC PAINTING / BEESWAX (ANY)

**C119.** METAL ART (FLAT)

**C120.** ALTERED THRIFT STORE PAINTING

**C121.** PAINTED ROCKS

**C122.** STRING ART

**C123.** MISCELLANEOUS

### JEWELRY

**C124.** SINGLE ITEM OR MATCHING PIECES (NO STONES)

**C125.** SINGLE ITEM OR MATCHING PIECES (WITH STONES)

**C126.** JEWELRY ART COLLAGE (FRAMED / UNFRAMED)

**C127.** OTHER

### MOSAIC TILE

*Glass, stone, and ceramic.*

**C128.** WALL HANGING

**C129.** OTHER ARTICLES

### SCRAPBOOKING

*Pages must be in sleeves.*

**C130.** 8.5" X 11" TWO-PAGE SCRAPBOOK LAYOUT

**C131.** 12" X 12" TWO-PAGE SCRAPBOOK LAYOUT

### STAINED GLASS

**C132.** STAINED GLASS – COPPER FOIL

**C133.** STAINED GLASS – LEADED

**C134.** 3-D STAINED GLASS - ANY

**C135.** SUNCATCHER - LEADED OR COPPER FOIL

### GLASS

**C136.** FUSED GLASS

**C137.** SLUMPING

**C138.** GLASS FLAME WORKING (ANY)

**C139.** GLASS PAINTING (FIRED)

**C140.** PAINTING ON GLASS (ACRYLIC, OIL, WATERCOLOR, ETC.)

### TEXTILES

**C141.** WOVEN ARTICLES

**C142.** WOVEN WALL HANGINGS / RUGS

**C143.** PRINTED FABRICS / PAINTED FABRICS

**C144.** DYED FABRICS

**C145.** CREATIVE STITCHERY (WALL HANGING, NO QUILTS)



## CATEGORIES



### ADULT AMATEUR DIVISION (CONT.)

#### WOOD

*Walking canes, walking sticks, and swords not to exceed 52"*

- C146.** WOOD INLAY (*ANY ARTICLE*)
- C147.** TURNED WOOD (*ANY ARTICLE*)
- C148.** CARVED DESIGN (*STYLIZED, RELIEF & CHIP*)
- C149.** CANES / WALKING STICKS / SWORDS
- C150.** CARVED HUMAN / ANIMAL (*REALISTIC*)
- C151.** CARVED CARICATURES
- C152.** BIRD HOUSE / FEEDER
- C153.** BOXES / CHESTS
- C154.** INTARSIA
- C155.** CHILDREN'S TOYS
- C156.** ANY OTHER USING STATE FAIR THEME
- C157.** MISCELLANEOUS

#### FOLK ART

*No ceramics.*

#### C158. MISCELLANEOUS

#### DECORATED GOURDS

- C159.** FANTASY / WHIMSICAL
- C160.** MIXED MEDIA
- C161.** VESSELS / BOWL / CONTAINER
- C162.** ANIMAL
- C163.** MISCELLANEOUS

#### DIAMOND DOT OR PAINTING

- C164.** ANIMAL
- C165.** CITYSCAPE / LANDSCAPE / SEASCAPE
- C166.** FANTASY
- C167.** HOLIDAY
- C168.** STATE FAIR THEME
- C169.** ANY OTHER

### TEACHER & PROFESSIONAL DIVISION

- C170.** ASSEMBLAGE (*ANY MATERIAL*)
- C171.** COLLAGE (*ANY SUBJECT*)
- C172.** GLASS (*ANY SUBJECT*)
- C173.** JEWELRY (*ANY SUBJECT*)
- C174.** GOURDS (*ANY SUBJECT*)

- C175.** STAINED GLASS (*ANY*)
- C176.** WOOD (*ANY SUBJECT*)
- C177.** MOSAIC (*ANY SUBJECT*)
- C178.** STATE FAIR THEME
- C179.** ANY LEATHER ARTICLES (*HAND SEWN*)

### JUNIOR DIVISION

#### MISCELLANEOUS CRAFTS

- C180.** GLASS (*ANY*)
- C181.** ASSEMBLAGE (*ANY MATERIAL*)
- C182.** COLLAGE (*ANY MATERIAL*)
- C183.** PAPER CRAFT (*ANY*)
- C184.** STATE FAIR THEME (*ANY*)
- C185.** PYROGRAPHY (*WOOD BURNING*)
- C186.** JEWELRY
- C187.** LEATHER CRAFT (*ANY*)

- C188.** WOODCRAFT (*ANY*)
- C189.** PAINTED ROCKS
- C190.** STRING ART
- C191.** TEXTILES, PRINTED / PAINTED / DYED FABRICS
- C192.** RELIEF CARVING (*ANY WAX / WOOD / SHEETROCK*)
- C193.** RECYCLED ITEMS
- C194.** MISCELLANEOUS



**CHILD DIVISION****MISCELLANEOUS CRAFTS**

**C195.** ASSEMBLAGE (*ANY MATERIAL*)

**C196.** COLLAGE (*ANY MATERIAL*)

**C197.** PAPER CRAFT (*ANY SUBJECT*)

**C198.** ANY OTHER USING STATE FAIR THEME

**C199.** ANY JEWELRY

**C200.** SCULPTURE (*NO CLAY*)

**C201.** PAINTED ROCKS

**C202.** PAPIER MACHE

**C203.** STRING ART

**C204.** RECYCLED / FOUND ITEMS

**C205.** BIRD HOUSE / FEEDER

**C206.** ART WITH EMBELLISHMENTS

**C207.** TEXTILES (*PRINTED / PAINTED / DYED FABRICS*)

**C208.** PYROGRAPHY (*WOOD BURNING*)

**C209.** RELIEF CARVING (*WAX, WOOD, SHEETROCK*)

**C210.** MOSAIC (*ANY MATERIAL*)

**C211.** MOBILE

**C212.** GLASS (*ANY*)

**C213.** ANY OTHER

# DOLLS CONTEST



ENTRY FEES (PER ENTRY ITEM)				
ADULTS AMATEUR (18+ YRS. OF AGE)	SENIORS (70+ YRS. OF AGE)	JUNIORS (AGE 13 TO 17)	CHILD (12 YRS. & YOUNGER)	
\$5	\$2	\$4	\$3	
RIBBONS AND PRIZES				
BEST OF SHOW AWARDED ONCE PER DIVISION. OTHER RIBBONS AWARDED IN EACH CATEGORY.				
BEST OF SHOW	1ST PLACE	2ND PLACE	3RD PLACE	HONORABLE MENTION
ONCE PER DIVISION	BLUE RIBBON	RED RIBBON	WHITE RIBBON	YELLOW RIBBON

## ★ ——— COMPETITION INFORMATION AND RULES ——— ★

### CONTEST RULES

- Adult and Junior divisions compete together for ribbons, including Best of Show.
- Entries may not exceed 24" in height, unless noted in category details.
- The composition of the head determines the classification.
- A stand is required for proper display.

- See the "How to Enter" Guide on Page 1 for information on submitting a Creative Arts entry.

### PROHIBITED ENTRIES

- No broken or damaged items.

### MAXIMUM ENTRIES

- Contestants may enter six (6) categories, with one (1) entry per category.

## ★ ——— CATEGORIES ——— ★

### ADULT AND JUNIOR DIVISION

#### ANTIQUE DOLL

*Before 1930 (A&M, Kestner, Simon, Halbig, etc.).*

**D100.** BISQUE / PORCELAIN

**D101.** CHINA HEAD

**D102.** OTHER

#### MODERN OR CONTEMPORARY DOLLS

*1930 to present-day (Alexander's, Effanbee, Horseman, Vogue, Ideal, Mattel).*

**D103.** COMPOSITION

**D104.** VINYL

**D105.** HARD PLASTIC

**D106.** BISQUE / PORCELAIN



## CATEGORIES



### ADULT AND JUNIOR DIVISION (CONT.)

#### MODERN OR CONTEMPORARY DOLLS (CONT.)

- D107. OTHER
- D108. BARBIES
- D109. BABY DOLLS

#### INTERNATIONAL DOLLS

- D110. ANY COUNTRY (*MUST BE MADE IN COUNTRY REPRESENTED & CLOTHED IN COSTUME OF THAT COUNTRY*)
- D111. ANY COUNTRY (*NOT MADE IN COUNTRY REPRESENTED*)

#### HANDCRAFTED DOLLS

*Must be made by contestant.*

- D112. CLOTH (*SCULPTURED*)
- D113. CLOTH (*FLAT FACE*)
- D114. POLYMER CLAY
- D115. OTHER

#### HANDCRAFTED DOLLS

*Must be purchased by contestant.*

- D116. CLOTH
- D117. OTHER

#### REPRODUCTION DOLLS

*Must be handmade by contestant.*

- D118. BISQUE / PORCELAIN
- D119. CHINA

#### CHARACTERS, CELEBRITIES, AND THEME DOLLS

- D120. COUNTRY / WESTERN
- D121. VICTORIAN STYLE
- D122. ANY CHARACTER DOLL

### CHILD DIVISION

- D140. DOLLS 1930 TO PRESENT-DAY
- D141. INTERNATIONAL (*IN COSTUME*)
- D142. BABY DOLLS

- D123. ANY CELEBRITY DOLL
- D124. STATE FAIR THEME
- D125. AMERICANA
- D126. ANY PAIR (*HANDCRAFTED*)
- D127. ANY PAIR (*NOT HANDCRAFTED*)
- D128. CLOWNS
- D129. TROLL DOLLS

#### BEARS

*Entries may not exceed 18" in height.*

- D130. BARE BEARS (*MADE BY CONTESTANT*)
- D131. BARE BEARS (*NOT MADE BY CONTESTANT*)
- D132. DRESSED BEARS (*MADE BY CONTESTANT*)
- D133. DRESSED BEARS (*NOT MADE BY CONTESTANT*)

#### ANIMALS

*Entries may not exceed 18" in height. No crocheted or knitted animals.*

- D134. ANY ANIMAL (*MADE BY CONTESTANT*)
- D135. ANY ANIMAL (*NOT MADE BY CONTESTANT*)
- D136. OTHER

#### MINIATURES

*Entries may not exceed four inches.*

- D137. ANIMAL (*ANY*)
- D138. DOLL (*ANY*)

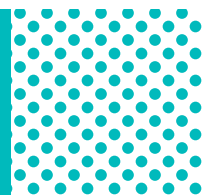
#### DOLLHOUSE

*Entry must be a building consisting of more than 1 room and built to a scale no larger than 1 inch = 1 foot. Furnishings, if included, must be appropriate for the building, to the same scale and must be secured in place. Maximum allowable base size is 24 in. long by 20 in. deep. Entry may not exceed 18 in. in height or 25 lbs. in weight.*

- D139. DOLLHOUSE

- D143. BEARS
- D144. AMERICAN GIRL TYPE
- D145. HANDCRAFTED BY CONTESTANT

# CANNING CONTEST



ENTRY FEES (PER ENTRY ITEM)			
ALL AGE DIVISIONS COMPETE IN THE SAME CATEGORIES. ENTRY FEES SAME FOR ALL AGE DIVISIONS. NO TEACHER & PROFESSIONAL DIVISION IN THIS CONTEST.			
\$2			
RIBBONS AND PRIZES RIBBONS AWARDED IN EACH CATEGORY.			
1ST PLACE	2ND PLACE	3RD PLACE	HONORABLE MENTION
BLUE RIBBON	RED RIBBON	WHITE RIBBON	YELLOW RIBBON

## ★ ——— COMPETITION INFORMATION AND RULES ——— ★

### CONTEST RULES

- This department does not award Best of Show.
- Contestants of all ages compete in same division for ribbons.
- Entries must be the work of the contestant and must have been completed since September 1, 2022.
- **Contestants must use colorless jars specially made for canning with two-piece non-decorative lids (ring and lid covers) in the standard unit size designated in the category details.**
- Fruit and Vegetable entries must be presented in one, 1-pint jars. All others require two identical half pint jars.
- Jars must be sterilized, with no permanent labeling.
- Jars must be properly filled and sealed by pressure cooker or hot water bath.
- A recipe for the entry item must be typed or printed on a separate sheet of paper, along with the contestant's name, address, and phone number on the back.
- Contestants who enter the canning contest and win first place through honorable mention, grant the State Fair of Texas the right and license to the entry (recipe and/or image) in perpetuity. Allowing the State Fair of Texas the right to edit, adapt and publish the recipe and/or image in the State Fair of Texas annual cookbook or any special edition cookbooks, recipe blogs on Fair or sponsor websites, and in third-party media placement. The contestant will receive credit for the recipe in all published forms.
- See the "How to Enter" Guide on Page 1 for information on submitting a Creative Arts entry.

### MAXIMUM ENTRIES

- Contestants may enter up to 12 categories, with only one (1) entry per category.





## CATEGORIES



### BUTTERS

- Half pint (8 oz.) standard jars with 1/4" head space.
- Two identical jars of each variety required: one emptied for judging and one remains sealed.
- No paraffin.
- Cook fruit pulp and sugar to a thick consistency.
- Less sugar is used than in jam.
- Entries are judged on appearance, color, consistency, flavor, and taste.

**E100.** APPLE

**E101.** APRICOT

**E102.** PEAR

**E103.** PEACH

**E104.** PLUM

**E105.** TROPICAL FRUIT

**E106.** ANY OTHER

### RELISH

- Half pint (8 oz.) standard jars with 1/4" head space.
- Two identical jars of each variety required: one emptied for judging and one remains sealed.
- Entries are judged on color, flavor, texture, pack, and taste.

**E107.** BARBECUE SAUCE

**E108.** CHILI SAUCE

**E109.** CHOW-CHOW

**E110.** CHUTNEY

**E111.** CORN RELISH

**E112.** CRANBERRY RELISH

**E113.** CUCUMBER RELISH

**E114.** FRUIT SALSA

**E115.** GREEN TOMATO RELISH

**E116.** MINCEMEAT (*FRUIT*)

**E117.** MUSTARD

**E118.** PASTA SAUCE

**E119.** PEPPER RELISH

**E120.** RED TOMATO RELISH

**E121.** SALSA (*HOT*)

**E122.** SALSA (*MILD*)

**E123.** SQUASH RELISH

**E124.** ZUCCHINI RELISH

### PICKLES

- 1 pint (16 oz.) standard jars.
- Two identical jars of each variety required: one emptied for judging and one remains sealed.
- Entries are judged on color, flavor, texture, pack, and taste.

**E125.** BEETS

**E126.** BREAD & BUTTER PICKLES

**E127.** CARROTS

**E128.** CAULIFLOWER

**E129.** CUCUMBER (*SOUR BRINED*)

**E130.** CUCUMBER (*SOUR QUICK*)

**E131.** CUCUMBER (*SWEET*)

**E132.** DILL CUCUMBERS (*WHOLE / STICKS*)

**E133.** DILL (*HOT*)

**E134.** DILL (*SWEET*)

**E135.** DILL (*VEGETABLE, ANY KIND*)

**E136.** EGGS (*PICKLED*)

**E137.** FIGS (*SWEET*)

**E138.** GREEN BEANS

**E139.** HAMBURGER PICKLES

**E140.** MUSTARD PICKLES

**E141.** OKRA

**E142.** ONIONS (*TINY / WHOLE*)

**E143.** PEACH

**E144.** PEPPERS (*CANDIED JALAPEÑO*)

**E145.** PEPPERS (*JALAPEÑO*)

**E146.** PEPPERS (*OTHER HOT VARIETIES*)

**E147.** SQUASH (*YELLOW*)

**E148.** TOMATO (*CHUNKY*)

**E149.** WATERMELON

**E150.** ANY OTHER



## CATEGORIES



### VEGETABLES

- 1 pint (16 oz.) standard jars with 1/2" head space.
- One jar of each variety required.
- Vegetables may not be opened or tasted.
- Entries are judged on appearance, color, pack, and liquid.

**E151.** ANY OTHER PEAS

**E152.** BEETS

**E153.** BLACK-EYED PEAS

**E154.** CARROTS

**E155.** CORN

**E156.** GREEN BEANS

**E157.** MIXED VEGETABLES

**E158.** NEW POTATOES & GREEN BEANS

**E159.** OKRA (*WHOLE*)

**E160.** STEWED TOMATOES

### FRUIT

- 1 pint (16 oz.) standard jars with 1/2" head space.
- One jar of each variety required.
- Fruit may not be opened or tasted.
- Entries are judged on color, pack, and liquid.

**E161.** BLACKBERRY

**E162.** BLUEBERRY

**E163.** CHERRY

**E164.** FIG

**E165.** PEACH (*SLICED / HALVED*)

**E166.** PEAR

### PRESERVES

- Half pint (8 oz.) standard jars with 1/4" head space.
- Two identical jars of each variety required: one emptied for judging and one remains sealed.
- Entries are judged on color, consistency, flavor, and taste.

**E167.** APPLE

**E168.** APRICOT

**E169.** BLACKBERRY

**E170.** BLUEBERRY

**E171.** CHERRY

**E172.** FIG

**E173.** FRUIT & BERRY

**E174.** PEACH

**E175.** PEAR

**E176.** PLUM

**E177.** RASPBERRY

**E178.** STRAWBERRY

**E179.** TOMATO

**E180.** ANY OTHER BERRY

**E181.** TROPICAL FRUIT (*ANY KIND*)

**E182.** TWO OR MORE FRUITS

### MARMALADE

- Half pint (8 oz.) standard jars with 1/4" head space.
- Two identical jars of each variety required: one emptied for judging and one remains sealed.
- Entries are judged on color, consistency, flavor, and taste.

**E183.** GRAPEFRUIT

**E184.** ORANGE

**E185.** LEMON

**E186.** TWO OR MORE FRUITS

**E187.** VEGETABLE

### JELLY

- Half pint (8 oz.) standard jars with 1/4" head space.
- Two identical jars of each variety required: one emptied for judging and one remains sealed.
- Entries are judged on color, consistency, flavor, and taste. No more than two decorative fruits of same variety may be used for an accent.

**E188.** APPLE

**E189.** APRICOT

**E190.** BASIL

**E191.** BEER

**E192.** BLACKBERRY

**E193.** BLUEBERRY

**E194.** CACTUS

**E195.** CARBONATED SODA

**E196.** CHERRY

**E197.** CORN

**E198.** CRANBERRY

**E199.** EDIBLE FLORAL

**E200.** GRAPE (*CONCORD*)

**E201.** GRAPE (*DOMESTIC*)

**E202.** GRAPE (*WILD*)

**E203.** HOT

**E204.** HOT (*CLEAR*)

**E205.** MINT

**E206.** MAYHAW\*\*



## CATEGORIES



### JELLY (CONT.)

- E207.** MESQUITE BEAN
- E208.** PEACH
- E209.** PEAR
- E210.** PINEAPPLE
- E211.** PLUM (*RED*)
- E212.** PLUM (*WILD*)
- E213.** POMEGRANATE\*\*\*
- E214.** RASPBERRY
- E215.** STRAWBERRY
- E216.** WINE (*DARK*)
- E217.** WINE (*WHITE*)
- E218.** TROPICAL FRUIT
- E219.** TWO FRUIT
- E220.** ANY OTHER

### JAM

- Half pint (8 oz.) standard jars with 1/4" head space.
- Two identical jars of each variety required: one emptied for judging and one remains sealed.
- Entries are judged on color, consistency, flavor, and taste. Color of the jam must be consistent with natural color of the fruit.

- E221.** APRICOT
- E222.** BANANA
- E223.** BERRY & FRUIT
- E224.** BLACKBERRY
- E225.** BLUEBERRY
- E226.** CHERRY
- E227.** GRAPE
- E228.** HOT FRUIT
- E229.** HOT VEGETABLE
- E230.** FIG
- E231.** MANGO
- E232.** MIXED BERRY

- E233.** PEACH
- E234.** PEAR
- E235.** PLUM
- E236.** RASPBERRY
- E237.** STRAWBERRY
- E238.** TROPICAL FRUIT
- E239.** TWO OR MORE FRUIT COMBINATION
- E240.** VEGETABLE
- E241.** VEGETABLE & FRUIT COMBINATION
- E242.** ANY OTHER FRUIT

### SUGAR-FREE JAM

- Half pint (8 oz.) standard jars with 1/4" head space.
- Two identical jars of each variety required: one emptied for judging and one remains sealed.
- No honey allowed.
- Entries are judged on color, consistency, flavor, and taste. Color of the jam must be consistent with natural color of the fruit.

- E243.** PEACH
- E244.** RASPBERRY
- E245.** STRAWBERRY
- E246.** ANY OTHER

### SUGAR-FREE JELLY

- Half pint (8 oz.) standard jars with 1/4" head space.
- Two identical jars of each variety required: one emptied for judging and one remains sealed.
- No honey allowed.
- Entries are judged on color, consistency, flavor, and taste.

- E247.** GRAPE
- E248.** PEACH
- E249.** STRAWBERRY
- E250.** ANY OTHER

#### Specialty Awards:

\*\* Presented by John Vestal: 1st - \$25, 2nd - \$15, 3rd - \$10

\*\*\* Presented by Rob Crook in memory of Joy Wyse: 1st - \$50, 2nd - \$25, 3rd - \$10

# HOBBY COLLECTIONS CONTEST



ENTRY FEES (PER ENTRY ITEM)			
ADULTS AMATEUR (18+ YRS. OF AGE)		SENIORS (70+ YRS. OF AGE)	
\$5		\$2	
RIBBONS AND PRIZES RIBBONS AWARDED IN EACH CATEGORY.			
1ST PLACE	2ND PLACE	3RD PLACE	HONORABLE MENTION
BLUE RIBBON	RED RIBBON	WHITE RIBBON	YELLOW RIBBON

## ★ ——— COMPETITION INFORMATION AND RULES ——— ★

### CONTEST RULES

- This department does not award Best of Show.
- Entries must not exceed 18" L; 12" W; 20" H in size, or 10 lbs. in weight, unless pre-approved. No more than two items per frame.
- **Items that have won in previous years may not be re-entered.**
- It is distinctly understood that in no case shall the State Fair of Texas, its directors, officers, or employees be held responsible for any loss, damage, or injury of any character to any person, animal, vehicle, art work, exhibit, or article, while participating in the Creative Arts building at the State Fair of Texas.
- See the "How to Enter" Guide on Page 1 for information on submitting a Creative Arts entry.

- Collection entries must consist of exactly two items aged 30 years or older – items must not be identical.
- Antique entries must 1 (one) single item and be 100 years or older.

### PROHIBITED ENTRIES

- **No broken or damaged items.**

### MAXIMUM ENTRIES

- Contestants may enter up to six (6) categories, with only one (1) entry allowed per category.



## CATEGORIES



### COLLECTIONS

*Entries must consist of exactly two items aged 30 years or older, and must not be identical.*

**F100.** ADVERTISING ITEMS

**F101.** AMERICAN GLASS (ANY TYPE)

**F102.** AMERICAN POTTERY

**F103.** APOTHECARY ITEMS

**F104.** ASIAN GLASS

**F105.** BANKS

**F106.** BARBER ITEMS

**F107.** BASKETS (CRYSTAL OR GLASS ONLY)

**F108.** BELLS

**F109.** BELT BUCKLES

**F110.** BOOKS (CHILDREN'S)

**F111.** BOTTLES

**F112.** BOXES (ORNAMENTAL)

**F113.** BREWERY ITEMS

**F114.** BUTTER DISHES

**F115.** BUTTONS (ONLY TWO - NOT LOOSE)

**F116.** CAMEOS

**F117.** CAMERAS

**F118.** CANDY DISHES

**F119.** CANDY JARS

**F120.** CANNING JARS

**F121.** CARNIVAL GLASS

**F122.** CHRISTMAS CARDS FRAMED

**F123.** CHRISTMAS ORNAMENTS (WITH A STAND,  
AS APPROPRIATE)

**F124.** CIGARETTE LIGHTERS

**F125.** CLOCKS

**F126.** COBALT GLASS

**F127.** COOKBOOKS

**F128.** COOKIE JARS

**F129.** COOKING PAMPHLETS

**F130.** COMPACTS

**F131.** COSTUME JEWELRY (NO EARRINGS)

**F132.** COWBOY BOOTS (ONE PAIR ONLY)

**F133.** CRANBERRY GLASS

**F134.** CUFF LINKS (TWO PAIR ONLY)

**F135.** CUPS & SAUCERS

**F136.** CUPS & SAUCERS (DEMITASSE)

**F137.** CUT GLASS

**F138.** DALLAS ITEMS

**F139.** DEPRESSION GLASS

**F140.** DESK ACCESSORIES

**F141.** DRESSER ACCESSORIES

**F142.** ENTERTAINMENT MEMORABILIA

**F143.** EYEGLASSES

**F144.** FIGURINES (CHINA / GLASS / CERAMICS)

**F145.** FISHER PRICE

**F146.** FISHING LURES (FRAMED ONLY)

**F147.** HANDKERCHIEFS

**F148.** HATS (BRIMS 8" MAX)

**F149.** KITCHEN UTENSILS

**F150.** LAPEL PINS

**F151.** LUNCH BOXES

**F152.** LUSTER WARE

**F153.** MECHANICAL ITEMS

**F154.** MILITARY ITEMS

**F155.** MILK GLASS

**F156.** MUGS

**F157.** OIL LAMPS

**F158.** PAPERWEIGHTS

**F159.** PERFUME BOTTLES

**F160.** PHOTOGRAPHS (MUST BE FRAMED)

**F161.** PIPES

**F162.** PITCHERS

**F163.** PLATES

**F164.** POCKET ITEMS

**F165.** POLITICAL ITEMS

**F166.** POSTCARDS (MUST BE FRAMED)

**F167.** PRESSED GLASS

**F168.** PURSES

**F169.** SALT & PEPPER SHAKERS (TWO PAIR)

**F170.** SCHOOL ITEMS

**F171.** SEWING ITEMS

**F172.** SHAVING RAZORS (NOT STRAIGHT EDGE)

**F173.** SOFT DRINK ITEMS

**F174.** SOUVENIR DISHES

**F175.** SOUVENIR SPOONS

**F176.** SPORTS MEMORABILIA

**F177.** STATE FAIR OF TEXAS SOUVENIR ITEMS

**F178.** SUGAR & CREAMER (TWO SETS)

**F179.** TEAPOTS

**F180.** TEXAS ITEMS

**F181.** THIMBLES

**F182.** TINS

**F183.** TOOLS

**F184.** TOOTHPICK HOLDERS

**F185.** TOYS (AUTOMOBILES / TRUCKS)

**F186.** TOYS (GAMES)

**F187.** TOYS (MISCELLANEOUS)





## CATEGORIES



### COLLECTIONS (CONT.)

- F188.** TOYS (*TRAINS*)
  - F189.** TRANSPORTATION ITEMS
  - F190.** TRAYS
  - F191.** TROPHIES
  - F192.** TUMBLERS
  - F193.** VALENTINES (*FRAMED*)
  - F194.** VASES
  - F195.** VINTAGE NEEDLEWORK (*NO QUILTS*)
  - F196.** WATCHES
  - F197.** WORLD'S FAIR ITEMS
  - F198.** YOUTH ORGANIZATIONS (*BOYS*)
  - F199.** YOUTH ORGANIZATIONS (*GIRLS*)
  - F200.** MISCELLANEOUS (2 ITEMS)
- 

### ANTIQUE ITEMS

*Entries must be one single item aged 100 years or older.*

- F201.** APPAREL
- F202.** CHINA
- F203.** CRYSTAL
- F204.** FIGURINE
- F205.** GLASS
- F206.** KITCHEN UTENSIL
- F207.** NEEDLEWORK (*NO QUILTS*)
- F208.** PRINTED MATERIAL
- F209.** SILVER OR SILVER PLATE
- F210.** PHOTOGRAPH (*MUST BE FRAMED*)
- F211.** OTHER

# HOLIDAY CORNER CONTEST



ENTRY FEES (PER ENTRY ITEM)				
ALL AGE DIVISIONS COMPETE IN THE SAME CATEGORIES.				
ADULTS AMATEUR (18+ YRS. OF AGE)	SENIORS (70+ YRS. OF AGE)	JUNIORS (AGE 13 TO 17)	CHILD (12 YRS. & YOUNGER)	
\$5	\$2	\$4	\$3	
RIBBONS AND PRIZES				
BEST OF SHOW AWARDED ONCE. OTHER RIBBONS AWARDED IN EACH CATEGORY.				
BEST OF SHOW	1ST PLACE	2ND PLACE	3RD PLACE	HONORABLE MENTION
AWARDED ONCE	BLUE RIBBON	RED RIBBON	WHITE RIBBON	YELLOW RIBBON

## ★ ——— COMPETITION INFORMATION AND RULES ——— ★

### CONTEST RULES

- All divisions compete together for Best of Show.
- Amateurs only.
- Entries must be the work of the contestant and must have been completed since September 1, 2022.
- Categories are for single items. No multiples or pairs; unless otherwise stated.
- Entries may not exceed 42" L; 38" W; 24" H in size or 25 lbs. in weight unless noted otherwise. No standing items over 30" high.
- Hooks, wire, or brackets must be on all hanging items. No pipe cleaners for hangers.

- Entries are judged on originality of design, appearance, and workmanship.
- See the "How to Enter" Guide on Page 1 for information on submitting a Creative Arts entry.

### PROHIBITED ENTRIES

- No soiled articles.
- No ceramics, plastic canvas, or polymer clay.
- No broken or damaged items.

### MAXIMUM ENTRIES

- Contestants may enter six (6) categories, with one (1) entry per category.



## CATEGORIES



### CHRISTMAS

- G100.** ARCHWAY DECORATION *(ANY MATERIAL)*
- G101.** CHRISTMAS DOOR DECORATION
- G102.** CHRISTMAS STOCKING *(FELT)*
- G103.** CHRISTMAS STOCKING *(NOT A KIT, ORIGINAL DESIGN)*
- G104.** CHRISTMAS STOCKING *(OTHER FABRIC)*
- G105.** CHRISTMAS TREE *(HANDMADE OF WOOD, TIN, WIRE, OR OTHER MATERIAL, NOT TO EXCEED 30")*
- G106.** CHRISTMAS TREE *(HANDMADE OF FELT, LACE OR OTHER FABRIC, NOT TO EXCEED 30")*
- G107.** CHRISTMAS TREE ORNAMENT
- G108.** CHRISTMAS TREE SKIRT *(ORIGINAL DESIGN, NOT TO EXCEED 42")*
- G109.** CHRISTMAS WINDOW DECORATION
- G110.** SANTA CLAUS *(STUFFED)*
- G111.** SANTA CLAUS *(BIG TEX STYLE)*
- G112.** SANTA CLAUS *(OTHER THAN STUFFED OR BIG TEX)*
- G113.** HANDMADE NATIVITY SCENE
- G114.** HANDMADE FIGURES *(THREE PIECES MAXIMUM, NOT TO EXCEED 17")*
- G115.** DECORATED WEARING APPAREL
- G116.** IN THE HOOP EMBROIDERY *(CHRISTMAS ONLY)*
- G117.** MANTEL COVER OR DECORATION
- G118.** CHRISTMAS TABLE DECORATION
- G119.** CHRISTMAS TREE SKIRT KIT *(NOT TO EXCEED 42")*

### MISCELLANEOUS

- G120.** ANY PATRIOTIC DECORATION
- G121.** CINCO DE MAYO DECORATION
- G122.** EASTER DECORATION
- G123.** HANUKKAH DECORATION
- G124.** INDEPENDENCE DAY DECORATION
- G125.** MARDI GRAS DECORATION
- G126.** NEW YEAR DECORATION
- G127.** PILLOW *(16" X 16" MAXIMUM)*
- G128.** PLACE MAT *(HANDMADE)*
- G129.** RUNNER *(HANDMADE, NOT TO EXCEED 60")*
- G130.** ST. PATRICK'S DAY DECORATION
- G131.** THANKSGIVING DECORATION
- G132.** VALENTINE'S DAY DECORATION
- G133.** WALL DECORATION *(ANY MATERIAL, NO WREATHS)*
- G134.** WREATHS *(ANY MATERIAL, ANY HOLIDAY THEME, NO SPORTS, NOT TO EXCEED 30" IN DIAMETER)*
- G135.** GOURDS *(HOLIDAYS)*

### HALLOWEEN

- G136.** COSTUMES *(CHILD'S, UP TO SIZE SIX)*
- G137.** DOOR DECORATION *(NO WREATHS)*
- G138.** MANTEL COVER OR DECORATION
- G139.** MASK *(ONLY ONE, NO MULTIPLES)*
- G140.** PILLOW *(16" X 16" MAXIMUM)*
- G141.** TABLE DECORATION
- G142.** WALL DECORATION *(NO WREATHS)*
- G143.** WEARING APPAREL *(UP TO CHILD SIZE 6)*
- G144.** WINDOW DECORATION *(NO WREATHS)*
- G145.** MISCELLANEOUS *(NO WREATHS)*

# NEEDLEPOINT, CREWEL, AND COUNTED CROSS STITCH CONTEST

ENTRY FEES (PER ENTRY ITEM)				
ADULTS AMATEUR / TEACHER & PROFESSIONALS (18+ YRS. OF AGE)	SENIORS (70+ YRS. OF AGE)	JUNIORS (AGE 13 TO 17)	CHILD (12 YRS. & YOUNGER)	
\$5	\$2	\$4	\$3	
RIBBONS AND PRIZES				
BEST OF SHOW AWARDED. OTHER RIBBONS AWARDED IN EACH CATEGORY.				
BEST OF SHOW	1ST PLACE	2ND PLACE	3RD PLACE	HONORABLE MENTION
ADULT NEEDLEPOINT, COUNTED CROSS STITCH, AND EMBROIDERY	BLUE RIBBON	RED RIBBON	WHITE RIBBON	YELLOW RIBBON

## ★ ——— COMPETITION INFORMATION AND RULES ——— ★

### CONTEST RULES

- Entries must be the work of the contestant and must have been completed since September 1, 2022.
- No soiled articles.
- Entries must be a size suitable to be shown in one of our exhibit cases.
- Framed articles must not exceed 648 sq. in., including frame.
- All entry items must be blocked.
- Proper equipment must be included on all hanging objects.
- See the "How to Enter" Guide on Page 1 for information on submitting a Creative Arts entry.

### MAXIMUM ENTRIES

- Contestants may enter six (6) categories, with one (1) entry per category, except for counted cross stitch.



## ADULT AMATEUR DIVISION

### NEEDLEPOINT

*Canvas Embroidery*

- **NEEDLEPOINT:** Up to 16 stitches per inch.
- **PETIT POINT:** 18 or more stitches per inch.
- **BARGELLO:** Straight vertical or straight horizontal, miscellaneous stitches per inch.
- **PROJECTS:** Taken in a class or with a stitch guide.

### PAINTED CANVAS

*Artwork prepared by person other than one doing needlework (thread not included).*

**H100.** PICTURE (*NOT OVER 108 SQ. IN.*)

**H101.** PICTURE (*NOT OVER 648 SQ. IN.*)

**H102.** PICTURE

*(GEOMETRIC DESIGN, NOT OVER 648 SQ. IN.)*

**H103.** PURSE / CLUTCH / TOTE

**H104.** CHRISTMAS STOCKING

**H105.** ACCESSORY

**H106.** PILLOW

**H107.** WEIGHTED FIGURE (*UNDER 12"*)

**H108.** WEIGHTED FIGURE (*OVER 12"*)

**H109.** ANY OTHER

### PETIT POINT

**H110.** PICTURE (*NOT OVER 108 SQ. IN.*)

**H111.** PICTURE (*NOT OVER 648 SQ. IN.*)

**H112.** CHRISTMAS STOCKING

**H113.** PILLOW

**H114.** RUG

**H115.** WEIGHTED FIGURE

**H116.** ANY OTHER

### BARGELLO

**H117.** PILLOW

**H118.** ANY OTHER

### PLASTIC CANVAS

**H119.** SINGLE ITEM

**H120.** ANY OTHER (*NOT TO EXCEED THREE PIECES*)

### CREWEL

*Not eligible for Best of Show.*

**H121.** PICTURE (*9" X 12" TO 12" X 36"*)

**H122.** PILLOW

**H123.** ANY OTHER ARTICLE

### COUNTED CROSS STITCH

*Maximum of three entries – with one entry per category.*

#### FOR REFERENCE:

PICTURE: 9" X 13" = 117 SQ. IN. INCLUDE FRAME.

PICTURE: 15" X 24" = 360 SQ. IN. INCLUDE FRAME.

PICTURE: 18" X 36" = 648 SQ. IN. INCLUDE FRAME.

**H124.** PICTURE NOT OVER 117 SQ. IN.

*(UP TO 13 STITCHES PER INCH)*

**H125.** PICTURE 118 TO 360 SQ. IN.

*(UP TO 13 STITCHES PER INCH)*

**H126.** PICTURE 361 TO 648 SQ. IN.

*(UP TO 13 STITCHES PER INCH)*

**H127.** ANY OTHER ARTICLE OF COUNTED CROSS STITCH

*(UP TO 13 STITCHES PER INCH)*

**H128.** PICTURE NOT OVER 117 SQ. IN.

*(14 TO 18 STITCHES PER INCH)*

**H129.** PICTURE 118 TO 360 SQ. IN.

*(14 TO 18 STITCHES PER INCH)*

**H130.** PICTURE 361 TO 648 SQ. IN.

*(14 TO 18 STITCHES PER INCH)*

**H131.** ANY OTHER ARTICLE OF COUNTED CROSS STITCH

*(14 TO 18 STITCHES PER INCH)*

**H132.** PICTURE NOT OVER 117 SQ. IN.

*(OVER 18 STITCHES PER INCH)*

**H133.** PICTURE 118 TO 360 SQ. IN.

*(OVER 18 STITCHES PER INCH)*

**H134.** PICTURE 361 TO 648 SQ. IN.

*(OVER 18 STITCHES PER INCH)*

**H135.** ANY OTHER ARTICLE

*(OVER 18 STITCHES PER INCH – NO PILLOW)*

**H136.** PILLOW





## CATEGORIES



### ADULT AMATEUR DIVISION (CONT.)

#### COUNTED CROSS STITCH (CONT.)

**H137.** CHRISTMAS STOCKING

*(OVER 14 TO 18 STITCHES PER INCH)*

**H138.** CHRISTMAS STOCKING *(UP TO 13 STITCHES PER INCH)*

**H139.** COUNTED CROSS STITCH SAMPLER

**H140.** COMPUTERIZED COUNTED CROSS STITCH

#### SPECIALTY STITCHES

##### STAMPED DESIGN, NO COUNTED CROSS STITCH

**H141.** PILLOW

**H142.** PILLOWCASE

**H143.** PICTURE KIT *(118 TO 648 SQ. IN., INCLUDES FRAME)*

**H144.** RUNNER

**H145.** OTHER *(SINGLE ITEM ONLY)*

**H146.** BABY BLANKET

##### NOT STAMPED DESIGN, NO COUNTED CROSS STITCH

**H147.** RIBBON EMBROIDERY

**H148.** SURFACE EMBROIDERY WITH METAL & SILK

**H149.** FOREIGN EMBROIDERY *(BRAZILIAN, JAPANESE, ETC.)*

**H150.** HARDANGER

**H151.** HOUSEHOLD ITEM

**H152.** RED WORK

**H153.** HUCK WORK

**H154.** BLACK WORK

**H155.** WHITE WORK

**H156.** EMBROIDERY, ANY OTHER

### TEACHER & PROFESSIONAL DIVISION

*Not eligible for Best of Show.*

**H157.** COUNTED CROSS STITCH

**H158.** NEEDLEPOINT

**H159.** SPECIALTY STITCHES

### JUNIOR DIVISION

*Not eligible for Best of Show.*

**H160.** COUNTED CROSS STITCH *(ANY ARTICLE)*

**H161.** NEEDLEPOINT *(ANY ARTICLE)*

**H162.** EMBROIDERY / CREWEL

### CHILD DIVISION

*Not eligible for Best of Show.*

**H163.** EMBROIDERY



# NEEDLEWORK AND SEWING CONTEST



ENTRY FEES (PER ENTRY ITEM)			
ADULTS AMATEUR / TEACHER & PROFESSIONALS (18+ YRS. OF AGE)	SENIORS (70+ YRS. OF AGE)	JUNIORS (AGE 13 TO 17)	CHILD (12 YRS. & YOUNGER)
\$5	\$2	\$4	\$3
RIBBONS AND PRIZES RIBBONS AWARDED IN EACH CATEGORY.			
1ST PLACE	2ND PLACE	3RD PLACE	HONORABLE MENTION
BLUE RIBBON	RED RIBBON	WHITE RIBBON	YELLOW RIBBON

## ★ ——— COMPETITION INFORMATION AND RULES ——— ★

### CONTEST RULES

- This department does not offer Best of Show.
- Entries must be the work of the contestant and must have been completed since September 1, 2022.
- Wall hanging entries may not exceed 36" x 36" in size.
- Knit and crochet entries must be blocked.
- May use fusible facing and interfacing material - no glue allowed.
- See the "How to Enter" Guide on Page 1 for information on submitting a Creative Arts entry.

### PROHIBITED

- No wall hangings over 36" x 36" x 36".
- No glued items.
- No soiled articles.
- No framed doilies.
- No quilts.

### MAXIMUM ENTRIES

- Contestants may enter six (6) categories, with one (1) entry per category.

## ★ ——— CATEGORIES ——— ★

### ADULT AMATEUR DIVISION

#### CROCHET

*Thread, yarn, ribbon, work cotton, and hemp*

I100. PONCHO

I101. SHAWL OR STOLE

I102. DOILIES (UP TO 12")

I103. DOILIES (UP TO 18")

I104. DOILIES (UP TO 24")

I105. RUNNER



## ADULT AMATEUR DIVISION (CONT.)

### CROCHET (CONT.)

- I106. TODDLER DRESS / SUIT
- I107. STUFFED ANIMAL / TOY (*PATTERN*)
- I108. STUFFED ANIMAL / TOY (*ORIGINAL DESIGN*)
- I109. SWEATER
- I110. TODDLER SWEATER
- I111. HAT
- I112. FILET CROCHET
- I113. PURSE / TOTE
- I114. TABLECLOTH
- I115. ARTICLE WITH CROCHET TRIM
- I116. APPAREL THAT DOES NOT FIT INTO ANOTHER CATEGORY
- I117. PILLOW (*CROCHETED FRONT & BACK, 24" X 24" MAXIMUM*)
- I118. VEST
- I119. ORIGINAL DESIGN (*ANY ARTICLE*)
- I120. NECK SCARF / INFINITY NECK SCARF
- I121. BABY DRESS / SUIT
- I122. RECYCLED / REUSED
- I123. PILLOW DOLL
- I124. HAT WITH BRIM
- I125. SLEEP SOCK / COCOON (*INFANTS*)
- I126. ANY ARTICLE OF CROCHET NOT MENTIONED ABOVE

### KNITTING

- I127. BABY DRESS / SUIT
- I128. CARDIGAN SWEATER
- I129. CHILD'S SWEATER
- I130. CHRISTENING DRESS
- I131. COAT / DRESS / SUIT
- I132. GLOVES / MITTENS
- I133. HANDBAG / TOTE
- I134. HAT (*CLOCHE*)
- I135. HAT (*NO BRIM*)
- I136. HAT (*WITH BRIM*)
- I137. KNITTED LACE
- I138. NECK SCARF / INFINITY NECK SCARF
- I139. ORIGINAL DESIGN (*ANY ARTICLE*)
- I140. PONCHO
- I141. SHAWL OR STOLE

- I142. SLIPOVER SWEATER
- I143. SOCKS
- I144. STUFFED ANIMAL / TOY (*ORIGINAL DESIGN*)
- I145. STUFFED ANIMAL / TOY (*PATTERN*)
- I146. TODDLER DRESS
- I147. TODDLER SWEATER
- I148. VEST
- I149. SLEEP SOCK / COCOON (*INFANTS*)
- I150. BABY CARRIER (*22" TO 24" W X 26" TO 32" L, MUST FIT IN CARRIER*)
- I151. RECYCLED ITEM
- I152. MISCELLANEOUS (*ANY OTHER*)

### MISCELLANEOUS HANDWORK

- I153. BEADWORK (*STATEMENT NECKLACE*)
- I154. BEADWORK (*WEARING APPAREL*)
- I155. BEADWORK JEWELRY (*OTHER*)
- I156. BEADWORK (*ANY ARTICLE OTHER THAN ABOVE*)
- I157. BEADWORK (*FRAMED, MAX 18" X 18"*)
- I158. APPLIQUE (*ANY ARTICLE*)
- I159. TATTING (*ANY ARTICLE*)
- I160. FELT CRAFT (*USING PURCHASED FELT*)
- I161. HAND KNITTED / CROCHET FELTING
- I162. SOFT SCULPTURE
- I163. HANDSEWN ITEM

### NEEDLE FELTING

*Nothing larger than 24" in any direction.*

- I164. THREE-DIMENSIONAL
- I165. TWO-DIMENSIONAL (*FLAT*)

### BOBBIN LACE

*Glue accepted on fans only.*

- I166. ORIGINAL DESIGN  
(*PATTERN DEVELOPED & WORKED BY LACEMAKER*)
- I167. ADAPTED DESIGN  
(*PATTERN INTERPRETED BY LACEMAKER*)



## CATEGORIES



### SMOCKING

- I168. CHILD'S DRESS OUTFIT (SIZE 1 TO 3)
- I169. CHILD'S DRESS OUTFIT (SIZE 4 TO 7)
- I170. CHILD'S DRESS OUTFIT (SIZE 8 TO 12)
- I171. ANY ARTICLE OTHER THAN ABOVE

### SEWING MACHINE ARTICLES

- I172. ADULT APPAREL (1+ PIECES)
- I173. APPLIQUE
- I174. APRON
- I175. BABY BLANKET (34" X 36" OR 39" X 41")
- I176. CHILDREN'S APPAREL
- I177. CHRISTENING DRESS
- I178. COMPUTERIZED APPLIQUE
- I179. COMPUTERIZED EMBROIDERY
- I180. COSTUME (NO STREET CLOTHES OR GARMENTS)
- I181. HANDBAG
- I182. INFANT'S APPAREL
- I183. IN THE HOOP EMBROIDERY

- I184. ORIGINAL DIGITIZED DESIGN
- I185. PATCHWORK (OTHER THAN PILLOW OR QUILT)
- I186. PATCHWORK PILLOW (18" X 18" MAXIMUM)
- I187. PILLOW (NOT PATCHWORK)
- I188. RECYCLED / REUSED
- I189. STUFFED TOY OR ANIMAL
- I190. TABLET COVER
- I191. TOTE BAG
- I192. WEARABLE ART (VESTS / JACKETS)
- I193. WEARABLE ART (CLOTHES, NO VESTS / JACKETS)
- I194. WEDDING DRESS
- I195. ANY OTHER ARTICLE (NO WALL HANGING / QUILT)

### DOLL CLOTHES

*Clothing must be removable from doll.*

- I196. DOLL CLOTHES (CROCHET)
- I197. DOLL CLOTHES (KNIT)
- I198. DOLL CLOTHES (SEWN)

## TEACHER & PROFESSIONAL DIVISION

- I199. CROCHET (ANY)
- I200. KNITTING (ANY)

- I201. SEWING MACHINE ARTICLES (ANY)

## JUNIOR DIVISION

- I202. APPLIQUE (ANY ARTICLE)
- I203. BEADWORK (ANY ARTICLE)
- I204. CROCHET (ANY ARTICLE)
- I205. CROCHET HAT
- I206. COSTUME (NO STREET CLOTHES / GARMENTS)
- I207. FELTING (ANY ARTICLE)
- I208. HAND SEWN (ANY ARTICLE)

- I209. KNITTING (ANY ARTICLE)
- I210. PILLOW (12" X 12" MAXIMUM)
- I211. RECYCLED / REUSED
- I212. SEWING MACHINE WORK (FASHION)
- I213. STUFFED ANIMAL
- I214. ACCESSORIES (TOTE, PURSE, ETC.)

## CHILD DIVISION

- I215. ACCESSORIES (TOTE, PURSE, ETC.)
- I216. SEWING MACHINE WORK (FASHION)

- I217. STUFFED ANIMAL
- I218. PILLOW (12" X 12" MAXIMUM)

# AFGHANS, RUGS, QUILTS, AND BEDSPREADS CONTEST



ENTRY FEES (PER ENTRY ITEM)				
ADULTS AMATEUR (18+ YRS. OF AGE)	SENIORS (70+ YRS. OF AGE)	JUNIORS (AGE 13 TO 17)	CHILD (12 YRS. & YOUNGER)	
\$5	\$2	\$4	\$3	
RIBBONS AND PRIZES				
BEST OF SHOW AWARDED. OTHER RIBBONS AWARDED IN EACH CATEGORY.				
BEST OF SHOW	1ST PLACE	2ND PLACE	3RD PLACE	HONORABLE MENTION
ADULTS & JUNIOR ONLY	BLUE RIBBON	RED RIBBON	WHITE RIBBON	YELLOW RIBBON

## ★ ——— COMPETITION INFORMATION AND RULES ——— ★

### CONTEST RULES

- All Afghans must be blocked.
- Entries must be the work of the contestant and must have been completed within the last two years.
- No soiled articles.
- All winning quilts may not be displayed by hanging.
- All quilts must be pieced and quilted by one person except in a two or more person category.
- See the "How to Enter" Guide on Page 1 for information on submitting a Creative Arts entry.
- Adult Best of Show is only awarded to both afghans and standard size quilts.
- Junior Best of Show awarded.

### MAXIMUM ENTRIES

- Contestants may enter six (6) categories, with one (1) entry per category.



## ADULT AMATEUR DIVISION

### AFGHANS

#### LARGE

50" x 70" and over, excluding fringe.

J100. AFGHAN (KNIT)

J101. AFGHAN (CROCHET)

J102. AFGHAN (EMBROIDERED, NO HUCK WORK)

#### SMALL

Less than 50" x 70", excluding fringe.

J103. AFGHAN (KNIT)

J104. AFGHAN (CROCHET)

J105. AFGHAN (EMBROIDERED, NO HUCK WORK)

### INFANTS AND TODDLERS

From carriage size 34" x 36" to crib size 39" x 41".

J106. BABY AFGHAN (KNIT)

J107. BABY AFGHAN (CROCHET)

### QUILTS

- Quilts must be a minimum of 72" long.
- Entries must be a king, queen, double or twin bed size only.
- No embroidered or whole cloth quilts made from pre-stamped kits.
- No tie quilts or coverlets.

J108. APPLIQUE (HAND QUILTED)

J109. APPLIQUE (MACHINE QUILTED)

J110. PATCHWORK (HAND QUILTED)

J111. PATCHWORK (MACHINE QUILTED)

J112. COMBINATION (HAND QUILTED)

J113. COMBINATION (MACHINE QUILTED)

J114. EMBROIDERED (HAND / MACHINE QUILTED)

J115. STATE FAIR THEME (HAND / MACHINE QUILTED)

J116. TWO-PERSON HAND / MACHINE QUILTED  
(NOT ELIGIBLE FOR BEST OF SHOW)

J117. GROUP QUILT (3+ PERSON) HAND / MACHINE QUILTED  
(NOT ELIGIBLE FOR BEST OF SHOW)

### BEDSPREADS

- Not eligible for Best of Show.
- Must be a minimum of 72" long.

J118. CROCHET

J119. QUILTED / PATCHWORK

J120. FAMILY ALBUM (T-SHIRTS / SCANNED PHOTO, ETC., NO CHARMS / TRINKETS ATTACHED)

### INFANTS AND TODDLERS

- Not eligible for Best of Show.
- Maximum size 42" x 42" or 1,764 sq. in.

J121. APPLIQUE

J122. PATCHWORK

J123. EMBROIDERED

J124. COMBINATION

J125. STATE FAIR THEME

### QUILTED ACCESORIES

- Not eligible for Best of Show.

J126. MACHINE QUILTED (NOT OVER 36" X 36")

J127. HAND QUILTED (NOT OVER 36" X 36")

J128. QUILTED MUG RUG (NOT OVER 10" X 10")

J129. QUILTED TABLE RUNNER (NOT OVER 60" LONG)

J130. QUILTED PILLOW (NOT OVER 16" X 16")

### RUGS

- Not eligible for Best of Show.
- Rugs must not exceed 3' x 4'.
- Rugs must be clean.
- May not be framed.

J131. CROCHET

J132. LATCH HOOK

### HAND HOOKING

J133. RUG (2 TO 5 FINE CUT)

J134. RUG (6 TO 9 WIDE CUT)

J135. SMALL RUG (ANY CUT, 18" X 24" & UNDER)

J136. RUG (9 WIDE CUT & UP, INCLUDING HAND-TORN)

J137. UTILITARIAN (NO RUGS, FRAMED PIECES NOT TO EXCEED 18" X 24")





## CATEGORIES



## JUNIOR DIVISION

**J138.** AFGHAN

**J139.** QUILT

**J140.** TWO OR MORE PERSON QUILT (*HAND / MACHINE MADE,  
NOT ELIGIBLE FOR BEST OF SHOW*)

**J141.** LATCH HOOK (*ANY OTHER*)

**J142.** PILLOW (*NOT OVER 14" X 14"*)

## CHILD DIVISION

*Not eligible for Best of Show.*

**J143.** QUILT (*BABY SIZE*)

**J144.** AFGHAN (*BABY SIZE*)

**J145.** LATCH HOOK RUGS (*SMALL*) / PILLOWS



# GET SOCIAL AND SHARE YOUR WORK!



SHARE YOUR ENTRIES AND RIBBONS BY TAGGING THE FAIR AND USING #BIGTEX AND #CREATIVEARTS. YOUR PHOTO JUST MIGHT MAKE IT ON THE FAIR'S SOCIAL MEDIA!

@STATEFAIROFTX




#BIGTEX



# PHOTOGRAPHY CONTEST



ENTRY FEES (PER ENTRY ITEM)				
ADULTS AMATEUR / TEACHER & PROFESSIONALS (18+ YRS. OF AGE)	SENIORS (70+ YRS. OF AGE)	JUNIORS (AGE 13 TO 17)	CHILD (12 YRS. & YOUNGER)	
\$6	\$2	\$4	\$3	
RIBBONS AND PRIZES				
BEST OF SHOW AWARDED (SEE BELOW). OTHER RIBBONS AWARDED IN EACH CATEGORY.				
BEST OF SHOW	1ST PLACE	2ND PLACE	3RD PLACE	HONORABLE MENTION
ADULT COLOR & B&W JR COLOR & B&W T&P COLOR & B&W	BLUE RIBBON	RED RIBBON	WHITE RIBBON	YELLOW RIBBON
SPECIALTY AWARDS				
<div><div>TEXAS BEEKEEPERS ASSOCIATION</div><p><i>Texas Beekeepers Association</i> OFFICIAL SPONSOR FOR: HONEY BEES - JUNIOR COLOR &amp; HONEY BEES - ADULT COLOR</p></div>	<div><p>CIRCLE R RANCH WEAR</p><p><i>Circle R Ranch Wear</i> AWARD CATEGORY: K121 – WESTERN WEAR</p></div>	<div><p>18  83</p><p>LUCCHESE</p><p>BOOTMAKER</p><p><i>Lucchese</i> BIG TEX LUCCHESE BOOTS CONTEST</p></div>		
BLUE <i>1st Place</i>	BLUE <i>1st Place</i>	BLUE <i>1st Place</i>		
\$50	RESISTOL STRAW HAT AND CUSTOM FITTING. MUST BE REDEEMED DURING THE 2023 FAIR.	SPECIAL SWAG BAG FROM LUCCHESE, (4) FOUR SEASON PASSES TO THE 2023 FAIR, AND A BIG TEX BOBBLEHEAD – ESTIMATED VALUE \$305.		



## COMPETITION INFORMATION AND RULES



### CONTEST RULES

- All photos must have been taken since **January 1, 2021**, except for **State Fair-themed**, which is any **Fair time activity**.
- Each photo print must be a minimum of 8" x 10" to a maximum of 11" x 14".
- **Must be mounted on foam core or mat board that is a required size of 11" x 14". May be glued on.**
- Photographic exposure must be made by contestant.
- All photographs must reflect scenes from Texas or the State Fair of Texas, except for in categories named "Other than in Texas."
- Must be appropriate for family viewing.
- Hand delivered photos need a written request and pre-paid return postage to be mailed back. Mailed in photos require pre-paid return postage to be mailed back.
- See the "How to Enter" Guide on Page 1 for information on submitting a Creative Arts entry.

- For each entry, contestant must fill out the **Photograph Label Form** located in the back of guide and attach to back of photograph.

### PROHIBITED ENTRIES

- No metal printing.
- No glass, frames, hangers, or brackets.
- No date, time stamp, or name allowed on photo front.
- Photos not on 11" x 14" foam core or mat board.

### MAXIMUM ENTRIES

- Contestants may enter up to six (6) categories, with only one (1) entry per category.
- The same subject may not be used in more than one (1) entry.



## CATEGORIES



### ADULT AMATEUR DIVISION

#### COLOR

- K100.** ANIMALS / WILDLIFE
- K101.** ANIMALS / DOMESTIC
- K102.** BIRDS
- K103.** FISH / REPTILES / MARINE LIFE
- K104.** FLORA (*CLOSE UP*)
- K105.** FLORA (*VISTA*)
- K106.** CHILD (*PRESCHOOL*)
- K107.** CHILD (*SCHOOL AGE*)
- K108.** CHILDREN (*TWO OR MORE*)
- K109.** PEOPLE
- K110.** RURAL (*FARM OR RANCH LIFE*)
- K111.** ACTION OR MOVEMENT
- K112.** INSECTS
- K113.** HONEY BEES 
- K114.** CITY SCENES
- K115.** BLUEBONNETS (*CLOSE-UP / FLORA*)
- K116.** ABSTRACT
- K117.** SCENERY (*LANDSCAPES / WATERSCAPES*)
- K118.** SKIES (*SUNRISE / SUNSET / WEATHER*)
- K119.** ARCHITECTURAL FEATURES / BUILDINGS / MONUMENTS
- K120.** STILL LIFE
- K121.** WESTERN WEAR
- K122.** STATE FAIR THEME

- K123.** HOLIDAYS
- K124.** PATRIOTIC (*MILITARY / FLAGS / FIRST RESPONDERS*)
- K125.** OTHER THAN IN TEXAS (*ANIMALS / BIRDS / REPTILES*)
- K126.** CURRENT EVENTS
- K127.** OTHER THAN IN TEXAS (*CULTURAL*)
- K128.** OTHER THAN IN TEXAS (*LANDSCAPES*)
- K129.** BIG TEX LUCCHESI BOOTS\*

#### BLACK & WHITE

- K130.** ANIMALS
- K131.** FLORA (*CLOSE-UP OR VISTA*)
- K132.** CHILD / CHILDREN
- K133.** PEOPLE
- K134.** STILL LIFE
- K135.** STATE FAIR THEME
- K136.** RURAL / CITY SCENES / ACTIVITIES
- K137.** ARCHITECTURAL FEATURES / BUILDINGS / MONUMENTS
- K138.** SCENERY (*LANDSCAPES / WATERSCAPES*)
- K139.** ACTION / MOVEMENT (*SPORTS*)
- K140.** OTHER THAN IN TEXAS (*CULTURAL OR ANIMALS*)
- K141.** OTHER THAN IN TEXAS (*LANDSCAPE*)





## ADULT AMATEUR DIVISION (CONT.)

### SPECIAL CATEGORY

*Not eligible for Best of Show.*

**K142.** COLOR OR BLACK & WHITE PHOTOGRAPH WHICH HAS BEEN ALTERED OR MANIPULATED IN A PHOTOGRAPHIC DIGITAL OR MANUAL PROCESS

\*SPECIAL PRIZE FROM LUCCHESI FOR THE WINNER OF THIS CATEGORY. PHOTOGRAPH FEATURING BIG TEX'S CURRENT BOOTS.

## TEACHER & PROFESSIONAL DIVISION

### COLOR

**K143.** ANIMALS

**K144.** PORTRAIT (*ADULT*)

**K145.** PORTRAIT (*CHILD*)

**K146.** LANDSCAPE IN TEXAS / OTHER THAN IN TEXAS

**K147.** ANY SUBJECT

### BLACK & WHITE

**K148.** ANIMALS

**K149.** PORTRAIT (*ADULT*)

**K150.** PORTRAIT (*CHILD*)

**K151.** LANDSCAPE IN TEXAS / OTHER THAN IN TEXAS

**K152.** ANY SUBJECT

## JUNIOR DIVISION

### COLOR

**K153.** ANIMALS (*WILDLIFE*)

**K154.** ANIMALS (*DOMESTIC*)

**K155.** BIRDS / FISH / REPTILE / MARINE LIFE

**K156.** CHILD / CHILDREN / PEOPLE

**K157.** ACTION OR MOVEMENT

**K158.** SCENERY (*LANDSCAPES / WATERSCAPES*)

**K159.** FLORA (*CLOSE-UP / VISTA*)

**K160.** RURAL / CITY SCENES / ACTIVITIES

**K161.** INSECTS

**K162.** PATRIOTIC (*MILITARY / FLAGS / FIRST RESPONDERS*)

**K163.** ARCHITECTURAL FEATURES / BUILDINGS / MONUMENTS

**K164.** ABSTRACT

**K165.** STILL LIFE

**K166.** BLUEBONNETS (*CLOSE-UP / FLORA*)

**K167.** STATE FAIR THEME

**K168.** HONEY BEES 

**K169.** SKIES (*SUNRISE / SUNSET / WEATHER*)

**K170.** OTHER THAN IN TEXAS (*CULTURAL / ANIMALS*)

**K171.** OTHER THAN IN TEXAS (*LANDSCAPE*)

### BLACK & WHITE

**K172.** ANIMALS

**K173.** FLORA (*CLOSE-UP / VISTA*)

**K174.** RURAL / CITY SCENES / ACTIVITIES

**K175.** ARCHITECTURAL FEATURES / BUILDINGS / MONUMENTS

**K176.** CHILD / CHILDREN / PEOPLE

**K177.** OTHER THAN IN TEXAS (*ANIMALS / BIRDS / REPTILES, CULTURAL / LANDSCAPE*)

### SPECIAL CATEGORY

*Not eligible for Best of Show.*

**K178.** COLOR OR BLACK & WHITE PHOTOGRAPH WHICH HAS BEEN ALTERED OR MANIPULATED IN A PHOTOGRAPHIC DIGITAL OR MANUAL PROCESS



---

## CATEGORIES

---



### CHILD DIVISION

*Not eligible for Best of Show.*

**K179.** ANIMALS (COLOR / BLACK & WHITE)

**K180.** ANY SUBJECT (COLOR / BLACK & WHITE)

**K181.** PEOPLE (COLOR / BLACK & WHITE)

**K182.** FLORA (CLOSE-UP / VISTA)



# SCALE MODELS CONTEST



ENTRY FEES (PER ENTRY ITEM)			
ADULTS AMATEUR (18+ YRS. OF AGE)	SENIORS (70+ YRS. OF AGE)	JUNIORS (AGE 13 TO 17)	CHILD (12 YRS. & YOUNGER)
\$5	\$2	\$4	\$3
RIBBONS AND PRIZES RIBBONS AWARDED IN EACH CATEGORY.			
1ST PLACE	2ND PLACE	3RD PLACE	HONORABLE MENTION
BLUE RIBBON	RED RIBBON	WHITE RIBBON	YELLOW RIBBON

## ★ ——— COMPETITION INFORMATION AND RULES ——— ★

### CONTEST RULES

- This department does not award Best of Show.
- Due to limited display area, each entrant is encouraged to build as small as is practical for the subject.
- Entries, including its base, must not exceed 12" L; 18" W; 16" H in size and 35 lbs. in weight, unless noted in category details.
- Ship categories require entry to be no larger than 36" L; 36" H; 18" D.
- Must be securely mounted – should be glued.
- See the "How to Enter" Guide on Page 1 for information on submitting a Creative Arts entry.

### PROHIBITED ENTRIES

- No broken or items with loose pieces.

### MAXIMUM ENTRIES

- Contestants may enter six (6) categories, one (1) entry per category.



## ADULT AMATEUR DIVISION

### KIT

- The model must be built from a single commercial kit as the manufacturer of the kit intended.
- Color schemes and/or markings may be changed; minor structural changes and nominal addition of non-kit components may be made to correct, change, or improve detail.
- Entries are judged on complexity of original kit, accuracy of representation, overall workmanship, and total impression of the model.

**L100.** AIRCRAFT

**L101.** WHEELED VEHICLE

**L102.** TRACKED VEHICLE

**L103.** SHIP (*SAILS*)

**L104.** SHIP (*POWERED*)

**L105.** FIGURE (*NO MORE THAN THREE*)

**L106.** ANY OTHER SUBJECT

### KIT CONVERSION

- The model must demonstrate the use of components of commercial kits combined with hand-built parts and/or significant structural changes to kit components.
- “Super-detailed stock” kits will be accepted in this section.
- **The entrant should submit a statement of the general work involved in the construction of the model.**
- Entries are judged on the difficulty of technique, amount of handwork involved, overall workmanship, and total impression of the model.

**L107.** ANY SUBJECT

### SCRATCH BUILT

- The model must be a scale representation of a full-size prototype.
- Kit components and/or commercial parts may be used only in an incidental manner.
- **The entrant should submit a statement describing the general features of the work involved in the model.**
- Entries are judged on originality of subject, accuracy of representation, overall workmanship, and total impression of the model.

**L108.** PRIMARILY METAL

**L109.** PRIMARILY WOOD

**L110.** BOX ROOMS (*ANY MATERIAL(S)*)

**L111.** SHOPS (*RETAIL, REPAIR, ETC.*)

**L112.** NON-SCALE (*ANY MATERIAL(S)*)

**L113.** PRIMARILY PAPER

**L114.** WHEELED VEHICLE

**L115.** ANY OTHER MATERIAL(S)

**L116.** SCALE BUILDINGS / HOUSES (*NO DOLLHOUSES*)

**L117.** FIGURES (*NOT TO EXCEED 25 IN NUMBER*)

**L118.** SHOE BOX PARADE FLOAT (*PATRIOTIC*)

**L119.** SHOE BOX PARADE FLOAT (*STATE FAIR THEME*)

### DIORAMA

- Commercial pre-built components may be used as required.
- Entries are judged as a whole, based on originality of subject, complexity, overall workmanship, and total impression of the scene.

**L120.** NON-MILITARY THEME

**L121.** MILITARY THEME (*BEFORE 1900*)

**L122.** MILITARY THEME (*1900 TO PRESENT DAY*)

**L123.** ANY USE OF STATE FAIR THEME

**L124.** WHIMSICAL OR FANTASY SCENE

### LEGOS®

- Scratch built – **no kits, should be glued.**

**L125.** ADULT LEGOS®



## JUNIOR DIVISION

### KIT

- Models are to be constructed from commercial kits.
- Entries are judged on overall workmanship and total impression of the model.

**L126.** AIRCRAFT

**L127.** WHEELED VEHICLE

**L128.** TRACKED VEHICLE

**L129.** SHIP (*SAILS*)

**L130.** SHIP (*POWERED*)

**L131.** ANY OTHER SUBJECT

### KIT CONVERSION

- The model must demonstrate the use of components of commercial kits combined with hand-built parts and/or significant structural changes to kit components.
- “Super detailed stock” kits will be accepted in this section.
- **The entrant should submit a statement of the general work involved in the construction of the model.**
- Entries are judged on difficulty of technique, amount of handwork involved, overall workmanship, and total impression of the model.

**L132.** ANY SUBJECT

### SCRATCH BUILT

- Models may represent the builder’s impression of any subject and need not necessarily be of a real object.
- Entries are judged on originality of subject, complexity, overall workmanship, total impression of the model, and age of entrant.

**L133.** MODELS BUILT FROM RAW MATERIALS (*WOOD, PAPER, ETC.*)

**L134.** MODELS BUILT FROM KIT PARTS

**L135.** SHOE BOX PARADE FLOAT (*PATRIOTIC*)

**L136.** SHOE BOX PARADE FLOAT (*STATE FAIR THEME*)

### DIORAMA

- Commercial pre-built components may be used as required.
- No diorama component may be entered in any other category.
- Diorama entries are judged as a whole, based on originality of subject, complexity, overall workmanship, total impression of the scene, and age of entrant.

**L137.** MILITARY THEME (*BEFORE 1900*)

**L138.** MILITARY THEME (*1900 TO PRESENT DAY*)

**L139.** NON-MILITARY THEME

### LEGOS®

- Scratch built – **no kits, should be glued.**

**L140.** JUNIOR LEGOS®



## CHILD DIVISION

- Judging of entries in this section will be on the basis of overall workmanship, the total impression of the model, and the age of the entrant.

**L141.** KITS (ANY SUBJECT, NO LEGOS® OR K'NEX®)

**L142.** SCRATCH BUILT (ANY SUBJECT, NO LEGOS® OR K'NEX®)

**L143.** SCRATCH BUILT (STATE FAIR THEME, NO LEGOS® OR K'NEX®)

**L144.** SHOE BOX PARADE FLOAT (PATRIOTIC)

**L145.** SHOE BOX PARADE FLOAT (STATE FAIR THEME)

### DIORAMA

- Commercial pre-built components may be used as required.
- Diorama entries will be judged as a whole, based on originality of subject, complexity, overall workmanship, total impression of the scene, and age of entrant.

**L146.** ANY THEME

### LEGOS® / K'NEX® ASSEMBLIES

- Assemblies that can easily become separated must be secured by other means than just pressure fitting.

#### LEGOS® ASSEMBLIES - KITS

**L147.** 7 YEARS & UNDER

**L148.** 8 TO 12 YEARS OF AGE

#### LEGOS® ASSEMBLIES - ORIGINAL DESIGNS ONLY

**L149.** 7 YEARS & UNDER

**L150.** 8 TO 12 YEARS OF AGE

#### K'NEX® ASSEMBLIES - KITS

**L151.** 7 YEARS & UNDER

**L152.** 8 TO 12 YEARS OF AGE

#### K'NEX® ASSEMBLIES - ORIGINAL DESIGNS ONLY

**L153.** 7 YEARS & UNDER

**L154.** 8 TO 12 YEARS OF AGE

#### TINKER TOY®

**L155.** 7 YEARS & UNDER

**L156.** 8 TO 12 YEARS OF AGE

#### LINCOLN LOGS®

**L157.** 7 YEARS & UNDER

**L158.** 8 TO 12 YEARS OF AGE

# GLUE-A-SHOE CONTEST



ENTRY FEES (PER ENTRY ITEM)			
ADULTS AMATEUR (18+ YRS. OF AGE)	SENIORS (70+ YRS. OF AGE)	JUNIORS (AGE 13 TO 17)	CHILD (12 YRS. & YOUNGER)
\$5	\$2	\$4	\$3
RIBBONS AND PRIZES ADULT AND JUNIOR/CHILD RIBBONS AWARDED IN EACH CATEGORY.			
1ST PLACE	2ND PLACE	3RD PLACE	HONORABLE MENTION
BLUE RIBBON	RED RIBBON	WHITE RIBBON	YELLOW RIBBON

## ★ ——— COMPETITION INFORMATION AND RULES ——— ★

### CONTEST RULES

- This contest does not award Best of Show.
- Edible substances are prohibited on items entered.
- Decorations may be purchased or handmade.
- No entry may exceed 24" L x 24" W x 24" H in size.
- Entries must display its title on the item.
- See the "How to Enter" Guide on Page 1 for information on submitting a Creative Arts entry.

### PROHIBITED ENTRIES

- Entries using pairs of shoes. Only one shoe is allowed to be used per entry.

### MAXIMUM ENTRIES

- Contestants may enter six (6) categories, one (1) entry per category.

## ★ ——— CATEGORIES ——— ★

### ADULT AMATEUR DIVISION

**M100.** BOOT

**M101.** HIGH-HEELED SHOE

**M102.** SANDAL OR FLIP-FLOP

**M103.** TENNIS SHOE

**M104.** SLIP ON

**M105.** ANY SHOE

### JUNIOR / CHILD DIVISION

**M106.** ANY SHOE

# THE GREAT PUMPKIN CHALLENGE CONTEST



ENTRY FEES (PER ENTRY ITEM)			
ADULTS AMATEUR (18+ YRS. OF AGE)	SENIORS (70+ YRS. OF AGE)	JUNIORS (AGE 13 TO 17)	CHILD (12 YRS. & YOUNGER)
\$5	\$2	\$4	\$3
RIBBONS AND PRIZES ADULT AND JUNIOR/CHILD RIBBONS AWARDED IN EACH CATEGORY.			
1ST PLACE	2ND PLACE	3RD PLACE	HONORABLE MENTION
BLUE RIBBON	RED RIBBON	WHITE RIBBON	YELLOW RIBBON

## ★ ——— COMPETITION INFORMATION AND RULES ——— ★

### ENTRY RULES

- This contest does not award Best of Show.
- Decorations may be purchased or handmade.
- No entry may exceed approximately 10 pounds of weight.
- Entries must display its title on the item.
- Entries must be artificial pumpkins.
- See the "How to Enter" Guide on Page 1 for information on submitting a Creative Arts entry.

### PROHIBITED ENTRIES

- Entries made of fresh pumpkins.

### MAXIMUM ENTRIES

- Contestants may enter one (1) entry per category.

## ★ ——— CATEGORIES ——— ★

### ADULT AMATEUR DIVISION

- N100.** STATE FAIR-THEMED  
**N101.** HALLOWEEN

### JUNIOR DIVISION

- N102.** STATE FAIR-THEMED  
**N103.** HALLOWEEN

### CHILD DIVISION

- N104.** STATE FAIR-THEMED  
**N105.** HALLOWEEN

## ARTS & CRAFTS PRE-FAIR CONTEST 2023 ENTRY FORM

MAIL-IN ENTRIES ONLY MUST ARRIVE BY THE REGISTRATION DEADLINE & MUST INCLUDE:

- Copy of Registration • Return Postage (Prepaid Postage, Check or Money Order).

MAILED-IN ENTRIES WILL BE RETURNED NO LATER THAN THREE WEEKS AFTER THE CLOSING OF THE FAIR.

UPS or FEDEX address  
State Fair of Texas: Creative Arts Dept.  
1327 Admiral Nimitz Circle, Dallas, TX 75210

U.S. Postal Service address  
State Fair of Texas, ATTN: Creative Arts Dept.  
P.O. Box 150009, Dallas, TX 75315

### TYPE OR PRINT • ALL INFORMATION REQUIRED FOR VALID ENTRY FORM

CONTESTANT NAME: \_\_\_\_\_

ADDRESS: \_\_\_\_\_

CITY: \_\_\_\_\_ STATE: \_\_\_\_\_ ZIP: \_\_\_\_\_

EMAIL: \_\_\_\_\_

CELL PHONE OR DAYTIME PHONE NUMBER: \_\_\_\_\_

CONTESTANTS - PRINT MONTH, DAY, AND YEAR OF BIRTH: \_\_\_\_\_

HAVE YOU PREVIOUSLY BEEN COVERED BY THE PRESS/MEDIA? \_\_\_\_\_

IF SO, BY WHOM AND WHEN? \_\_\_\_\_

ARE YOU WILLING TO BE INTERVIEWED BY MEDIA? ☐ YES ☐ NO

ARE YOU A TEACHER OR PROFESSIONAL? ☐ YES ☐ NO

ARE YOU A FIRST TIME CONTESTANT IN CREATIVE ARTS? ☐ YES ☐ NO

IMPORTANT - PLEASE ANSWER:  
DID YOU ENTER IN THE LAST FOUR YEARS? ☐ YES ☐ NO

HAS ADDRESS CHANGED SINCE LAST FAIR? ☐ YES ☐ NO  
(PLEASE PROVIDE IF CHANGED)

Do you have a unique or interesting story about your Creative Arts participation at the State Fair of Texas?  
We want to hear about it! Email us at [creativearts@bigtex.com](mailto:creativearts@bigtex.com).

CATEGORY NO.	DESCRIPTION	ENTRY FEE
	Must be same description wording as "Category" in Guide	
1		\$
2		\$
3		\$
4		\$
5		\$
6		\$
7		\$
8		\$
9		\$
10		\$
	TOTAL OF ENTRY FEES INCLUDED =	\$

By signing this Entry Form and as a condition of entry in the State Fair of Texas contest, I certify that I have read, understand, and will abide by the rules and regulations in the 2023 State Fair of Texas Creative Arts Guide, as defined by State Fair's Creative Arts Dept. I acknowledge that all of the above-stated information and representations are true and correct. I understand that all recipes submitted hereunder will become the property of the State Fair of Texas. The State Fair of Texas reserves the right to edit, adapt, publish, publicize, assign and/

or use any or all of such recipes or photographs or images, including my name, in its business, promotion and advertising, without any compensation to me. I acknowledge that the State Fair of Texas reserves the right to publish recipes, photograph entries or images of me taken during the contest events and use such recipes, photographs or images in its business, promotion and advertising without any compensation due to me. By signing below, I voluntarily agree to these terms.

SIGNATURE OF CONTESTANT: \_\_\_\_\_ DATE: \_\_\_\_\_

Entry fees will not be refunded or transferred, but categories may be changed after entry form is delivered by mail to above address. Form must be complete. Payment of entry fees must be included. Make payment to State Fair of Texas. This form may be duplicated.



## PHOTOGRAPH LABEL FORM

Fill out the label form & tape or glue to the foam or mat board backing of your photograph.

NAME	
------	--

### DIVISION (CHECK ONE) – JUNIOR OR CHILD MUST INCLUDE AGE

☐ ADULT    ☐ JUNIOR    ☐ CHILD    ☐ PROFESSIONAL

AGE: \_\_\_\_\_ AGE: \_\_\_\_\_ AGE: \_\_\_\_\_ AGE: \_\_\_\_\_

ADDRESS: \_\_\_\_\_

CITY: \_\_\_\_\_ STATE: \_\_\_\_\_ ZIP: \_\_\_\_\_

DAYTIME PHONE: \_\_\_\_\_

EMAIL: \_\_\_\_\_

CATEGORY NUMBER: \_\_\_\_\_

DATE TAKEN & LOCATION OF PHOTO: \_\_\_\_\_

\_\_\_\_\_

## PHOTOGRAPH LABEL FORM

Fill out the label form & tape or glue to the foam or mat board backing of your photograph.

NAME	
------	--

### DIVISION (CHECK ONE) – JUNIOR OR CHILD MUST INCLUDE AGE

☐ ADULT    ☐ JUNIOR    ☐ CHILD    ☐ PROFESSIONAL

AGE: \_\_\_\_\_ AGE: \_\_\_\_\_ AGE: \_\_\_\_\_ AGE: \_\_\_\_\_

ADDRESS: \_\_\_\_\_

CITY: \_\_\_\_\_ STATE: \_\_\_\_\_ ZIP: \_\_\_\_\_

DAYTIME PHONE: \_\_\_\_\_

EMAIL: \_\_\_\_\_

CATEGORY NUMBER: \_\_\_\_\_

DATE TAKEN & LOCATION OF PHOTO: \_\_\_\_\_

\_\_\_\_\_

## PHOTOGRAPH LABEL FORM

Fill out the label form & tape or glue to the foam or mat board backing of your photograph.

NAME	
------	--

### DIVISION (CHECK ONE) – JUNIOR OR CHILD MUST INCLUDE AGE

☐ ADULT    ☐ JUNIOR    ☐ CHILD    ☐ PROFESSIONAL

AGE: \_\_\_\_\_ AGE: \_\_\_\_\_ AGE: \_\_\_\_\_ AGE: \_\_\_\_\_

ADDRESS: \_\_\_\_\_

CITY: \_\_\_\_\_ STATE: \_\_\_\_\_ ZIP: \_\_\_\_\_

DAYTIME PHONE: \_\_\_\_\_

EMAIL: \_\_\_\_\_

CATEGORY NUMBER: \_\_\_\_\_

DATE TAKEN & LOCATION OF PHOTO: \_\_\_\_\_

\_\_\_\_\_

## PHOTOGRAPH LABEL FORM

Fill out the label form & tape or glue to the foam or mat board backing of your photograph.

NAME	
------	--

### DIVISION (CHECK ONE) – JUNIOR OR CHILD MUST INCLUDE AGE

☐ ADULT    ☐ JUNIOR    ☐ CHILD    ☐ PROFESSIONAL

AGE: \_\_\_\_\_ AGE: \_\_\_\_\_ AGE: \_\_\_\_\_ AGE: \_\_\_\_\_

ADDRESS: \_\_\_\_\_

CITY: \_\_\_\_\_ STATE: \_\_\_\_\_ ZIP: \_\_\_\_\_

DAYTIME PHONE: \_\_\_\_\_

EMAIL: \_\_\_\_\_

CATEGORY NUMBER: \_\_\_\_\_

DATE TAKEN & LOCATION OF PHOTO: \_\_\_\_\_

\_\_\_\_\_

## PHOTOGRAPH LABEL FORM

Fill out the label form & tape or glue to the foam or mat board backing of your photograph.

NAME	
------	--

### DIVISION (CHECK ONE) – JUNIOR OR CHILD MUST INCLUDE AGE

☐ ADULT    ☐ JUNIOR    ☐ CHILD    ☐ PROFESSIONAL

AGE: \_\_\_\_\_ AGE: \_\_\_\_\_ AGE: \_\_\_\_\_ AGE: \_\_\_\_\_

ADDRESS: \_\_\_\_\_

CITY: \_\_\_\_\_ STATE: \_\_\_\_\_ ZIP: \_\_\_\_\_

DAYTIME PHONE: \_\_\_\_\_

EMAIL: \_\_\_\_\_

CATEGORY NUMBER: \_\_\_\_\_

DATE TAKEN & LOCATION OF PHOTO: \_\_\_\_\_

\_\_\_\_\_

## PHOTOGRAPH LABEL FORM

Fill out the label form & tape or glue to the foam or mat board backing of your photograph.

NAME	
------	--

### DIVISION (CHECK ONE) – JUNIOR OR CHILD MUST INCLUDE AGE

☐ ADULT    ☐ JUNIOR    ☐ CHILD    ☐ PROFESSIONAL

AGE: \_\_\_\_\_ AGE: \_\_\_\_\_ AGE: \_\_\_\_\_ AGE: \_\_\_\_\_

ADDRESS: \_\_\_\_\_

CITY: \_\_\_\_\_ STATE: \_\_\_\_\_ ZIP: \_\_\_\_\_

DAYTIME PHONE: \_\_\_\_\_

EMAIL: \_\_\_\_\_

CATEGORY NUMBER: \_\_\_\_\_

DATE TAKEN & LOCATION OF PHOTO: \_\_\_\_\_

\_\_\_\_\_

