

I WANNA BE YOUR  
**VALENTINE**

IS IT  
**CORNY**  
TO ASK YOU TO  
BE MY *Valentine?*

I WOULD BE  
**HALF A  
PERSON**  
WITHOUT YOU



TO:



FROM:

STATE FAIR  
OF  
TEXAS®



TO:



FROM:

STATE FAIR  
OF  
TEXAS®



To:



From:

STATE FAIR  
OF  
TEXAS®



TO:

FROM:



STATE FAIR  
OF  
TEXAS®



MY LOVE FOR YOU IS  
AS TALL AS  
BIG TEX®



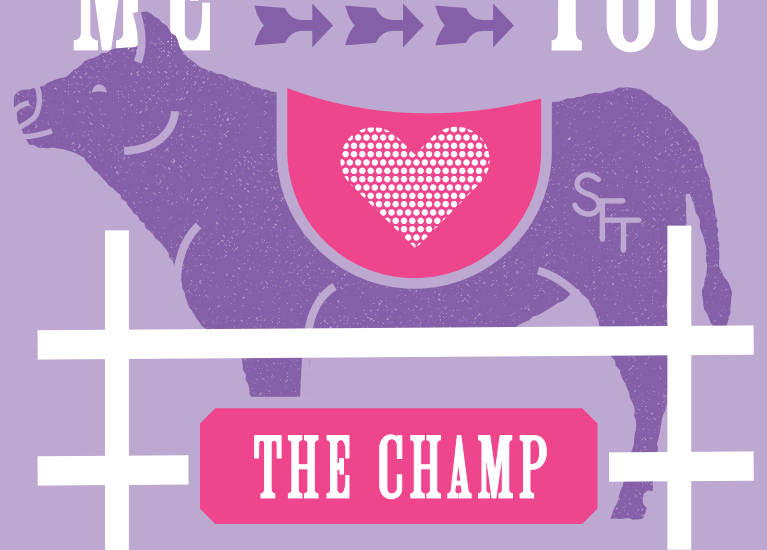
*My Love* ♥♥♥  
FOR YOU IS AS  
B & BRIGHT  
AS THE  
Texas  
STARS  
AT NIGHT



HOWDY!  
VALENTINE



MY *Heart*  
STEERED  
ME RIGHT TO YOU





TO:

FROM:

STATE FAIR  
OF  
TEXAS®



TO:



FROM:

STATE FAIR  
OF  
TEXAS®



TO:

FROM:



STATE FAIR  
OF  
TEXAS®



TO:

FROM:

STATE FAIR  
OF  
TEXAS®

