

The State Fair of
TEXAS
Curriculum

BIG TEX
GRADE 7 SOCIAL STUDIES

BIG TEX 2.0
A RE-IMAGINING





Big Tex 2.0 A Re-imagining

In this lesson students will:

- ★ Examine the history of Big Tex and his cultural influence.
- ★ Analyze the resources needed to make him and why he is considered a Texas icon.
- ★ Recreate Big Tex using their experiences and cultural influences as their inspiration.

Big Tex is a Historical Landmark that first appeared at the State Fair of Texas in 1952. It burned down in 2012 but was rebuilt and returned the next year. With his ten-gallon hat and friendly wave, his image was inspired by the cultural influences in Texas. If you were given the chance to create Big Tex, what would he look like?



Standards

- ★ Social Studies TEKS: 7.19(B), 7.20(D), 7.9(B)
- ★ ELAR TEKS: 7.10(A), 7.17(D)
- ★ Art TEKS: 7.1(A), 7.2(A), 7.3(A), 7.3(B), 7.4(A)

Before You Go

- ★ Refer students to the [Big Tex](#) site to learn more about Big Tex.
- ★ Individually or with partner, study the facts that you see on the site about Big Tex.
 - * Which ones stand out the most to you?
 - * Are any of them surprising?
 - * What more would you like to know about Big Tex that the site does not cover?
- ★ Can you tell just by looking at him what region of Texas that he is meant to represent? Why or why not?

TEACHER

BIG TEX



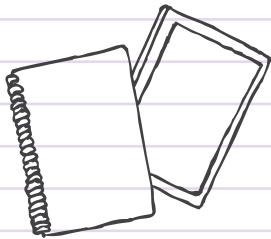
Big Tex 2.0 A Re-imagining

Plan Your Route.

★ Go Directly to Big Tex Circle.

Optional Materials to Bring

- ★ Smart Phone or Tablet
- ★ Pencil & Sketchbook



While You're There

The objective of your visit is to make observations about the appearance of Big Tex and the people who visit the Fair, so you make informed decisions when you redesign Big Tex back at school!

VISITORS' PERCEPTION

- Think about all of the visitors that see Big Tex when they come to the Fair.
- Do you feel that the way he is dressed represents this region of Texas? Why or why not? (Think about colors, textures, brands, etc.)
- What is distinct about his appearance?

YOUR PERCEPTION

- Do you feel that his appearance is representative of you or the region of Texas where you live? Why or why not?
- In what ways can you make his appearance represent you and the region of Texas where you have lived, or currently live?



Big Tex 2.0 A Re-imagining



After the Fair

When you return to class following your State Fair visit, you will create your own version of Big Tex!

- ★ Re-imagine Big Tex based on your observations and personal Texas influences.
- ★ Remember, Big Tex greets thousands of people and is considered a Texas icon. What kind of experience do you want your viewers to have?
- ★ Think about his clothes, facial expression, accessories, etc.
- ★ Your design will reflect a Big Tex that represents the region of Texas in which you previously or currently live, so think about his style of dress, as well as the material of his clothing.
- ★ You may choose to draw, paint, or even sculpt this work.
 - * Keep in mind, however, that color has the opportunity to play an important role in how people experience Big Tex and his meaning.
- ★ Be creative!
- ★ Be sure to share what you create with your classmates!
 - * Brainstorm how you will do this! (runway show, anyone??)

