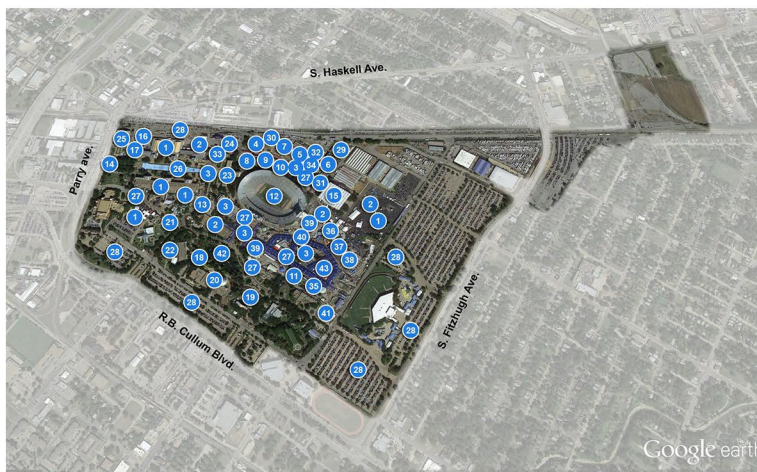


Impact of the Di Mambro Plan on the State Fair of Texas®

Current State Fair Grounds

277 Acres



Proposed Di Mambro Plan

84-120 Acres consisting of mostly parking and some Livestock facilities



Results

- Adoption of the Di Mambro Plan would reduce the Fair's footprint by up to 66%.
- Relocation to this area with no infrastructure would make it economically and operationally impossible to operate the State Fair.
- The Di Mambro Plan would effectively end the 129-year tradition of the State Fair of Texas in Dallas.

Losses include:

1. Auto Show
2. Exhibition Space
3. Concession Operations
4. Food & Fiber Building
5. Pan-American Arena
6. Historic Swine Barn
7. Historic Poultry Barn
8. The Dock Restaurant
9. Embarcadero Building
10. Creative Arts Building
11. Midway
12. Cotton Bowl Stadium
 - A. Texas/OU Game - Red River Showdown (Loss of Dallas' most well-known annual sporting event)
 - B. State Fair Classic (Loss of annual Grambling State / Prairie View A&M game)
13. Big Tex Circle
14. Direct access to DART Light Rail Stations
15. Coliseum
16. Continental D.A.R.
17. Marine Corps Square
18. Kids' Boardwalk
19. Band Shell Entertainment
20. Science Building Exhibit
21. Beer Garden
22. Classic Corral
23. Hall of State Exhibit
24. Main Stage
25. Mundo Latino Exhibit
26. Esplanade Show
27. Entertainment Stages
28. Event Parking
29. Briscoe Carpenter Livestock Center
30. Wine Garden
31. Little Hands on the Farm
32. Ag-Ed Livestock Shows
33. Children's Activity Center
34. Children's Barnyard
35. Greenhouse-on-the-Midway
36. Flow Rider Show
37. Commissary
38. State Fair Bank
39. State Fair Offices
40. Guest Relations
41. Special Events Tent
42. Swan Boats

