

The State Fair of
TEXAS
Curriculum

BIG TEX
GRADE 4 SOCIAL STUDIES

ICON-SIDER BIG TEX A BIG DEAL

A CULTURAL ICON WITH TEXAS-SIZED CHARACTER





ICON-SIDER BIG TEX A BIG DEAL

A Cultural **ICON** with Texas-Sized Character

Recap

- ★ Recall that an icon is a person or thing that is a representative symbol of something, like Big Tex, the Apple® symbol, or Taylor Swift.
- ★ See this article again on the history of Big Tex: [Texas Monthly Magazine](#)
- ★ Visit the link on Andy Warhol again to see his iconic artwork: <https://www.artsy.net/artist/andy-warhol>.
- ★ From your in-class discussion, remember what kinds of traits people came up with to describe different icons, and what you talked about, regarding Big Tex. What is Big Tex like?

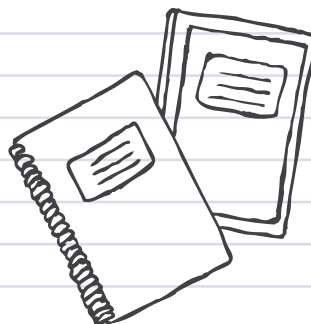
Plan Your Route.

- ★ Find Big Tex on the map, and go there.



Optional Materials to Bring

- ★ Smart Phone, Tablet
- ★ Pencil & Notepad
- ★ Sketchbook for Arts Connection





ICON-SIDER BIG TEX A BIG DEAL

A Cultural ICON with Texas-Sized Character

While You're There

You will use information you gather at the State Fair to help you with TWO project goals when you get back to school:

1. Make a Facebook page for Big Tex
2. Design a new icon for the State Fair

But these goals are for later. For NOW, the objective of your visit is to view Big Tex as an icon and gather information to use in those two projects when you get back to school.

How Fairgoers See Big Tex

- As you approach Big Tex, pay attention to the reactions of other people, as they look up at him.
- Are they snapping photos?
- Are they listening to his greetings?
- Spend a few minutes observing his size and dimensions.
- Why do you think he needed to be so big?

- Using your smartphone to capture responses, ask other guests to give you ONE WORD that sums up what Big Tex represents. (If they say "big" or "huge," see if you can get them to come up with something more creative!) If you don't have a smartphone, you can record their responses in the boxes below:

Words People Used to Describe Big Tex

_____	_____	_____	_____
_____	_____	_____	_____
_____	_____	_____	_____
_____	_____	_____	_____
_____	_____	_____	_____
_____	_____	_____	_____
_____	_____	_____	_____

- ★ Think about the qualities all Texas citizens should embrace and display.
- ★ How can you be a good citizen at the Fair?



ICON-SIDER BIG TEX A BIG DEAL

A Cultural **ICON** with Texas-Sized Character



Arts Connection

- Think about the following things regarding the sculpture of Big Tex:
 - Size
 - Color
 - Sound
 - Surroundings - what is around Big Tex? Is he the focus of the area that he is in?
- Does seeing him in person change the way you think of him as an icon? Why or why not?
- Next, walk around and take note of other things that you see at the Fair that you feel could be considered an icon for the State Fair.
- Draw some sketches or take some photos of these to reference later!

Back at School

When students return from the Fair, you will complete two project goals.

★ See your teachers for more information.

